



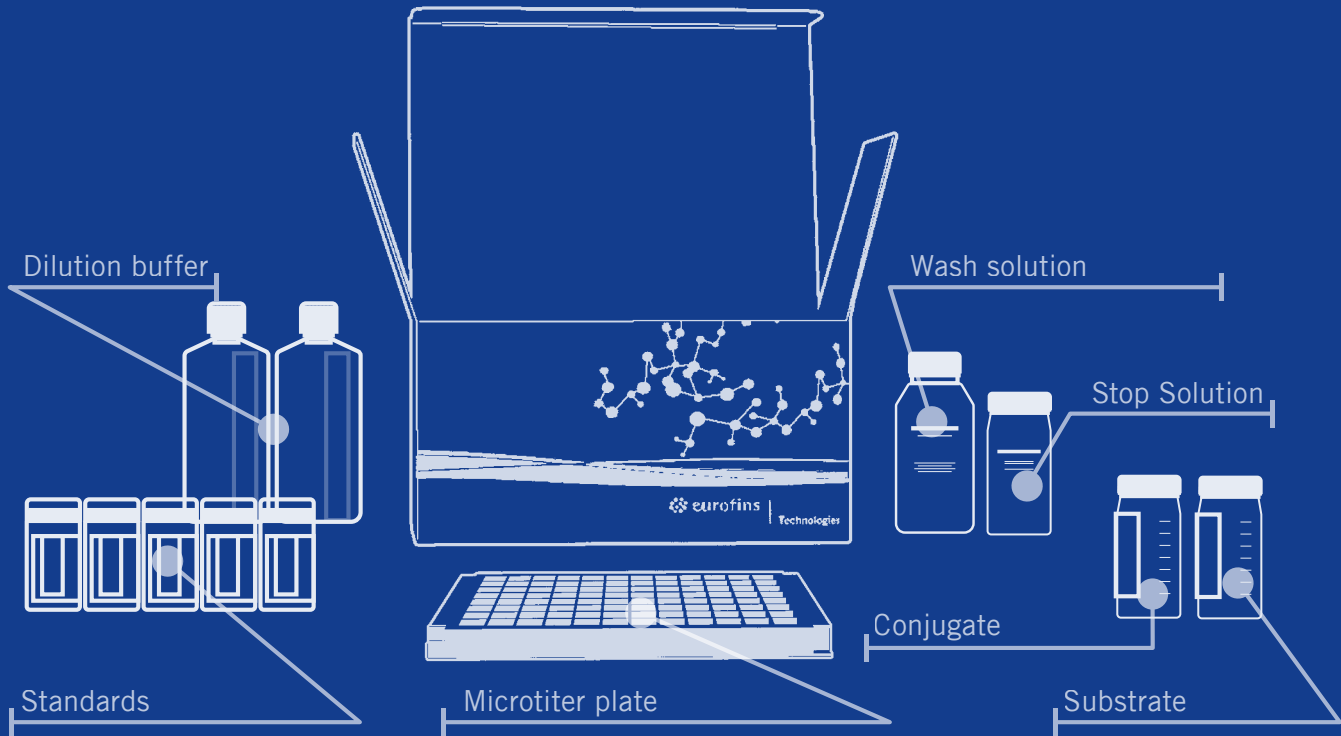
# Diagnostic Test Kits Catalogue 2020

Food, Feed, Animal Health and  
Environmental Analysis

# Diagnostic Test Kits

# Catalogue 2020

Food, Feed, Animal Health and Environmental Analysis



# TABLE OF CONTENTS



Eurofins Technologies Contacts and Locations ...6

## ALLERGENS ..... 9

- Eurofins Technologies Allergen Kits.....9
- SENSISpec Allergen Detection ELISA Kits ..10
- Supplementary Products.....10
- SENSISpec Gluten Detection ELISA Kits.....11
- SENSISpec Allergen Spike Solutions .....11
- SENSIStrip Lateral Flow Tests.....12

## VITAMIN ANALYSIS ..... 15

- Eurofins Technologies Vitamin Kits .....15
- SENSISpec ELISA Vitamin Kits.....15
- SENSIColumn Vitamin Immunoaffinity Columns .....15

## FOOD PATHOGENS..... 17

- Eurofins Technologies Pathogen Kits.....17
- BACGene Real-Time PCR Kits .....18
- Enrichment Media for BACGene .....18
- Other Kits .....18
- BACGene Accessory items .....18
- BACSpec ELISA Kits .....18
- Enrichment Medium for BACSpec .....18
- 0157 and non-0157 STEC Detection.....19
- Shiga Toxins.....19

## VIRUSES ..... 21

- Eurofins Technologies Virus Kits .....21
- VIRSeek Solution .....22

## MYCOTOXINS..... 23

- Eurofins Technologies Mycotoxin Kits.....23
- B ZERO® Quantitative ELISA Test Kits .....24
- Celer® Quantitative ELISA Test Kits .....24
- Smart Strip Lateral Flow Test Kits.....24
- I'Screen Quantitative ELISA Test Kits.....25
- SENSIColumn Immunoaffinity Columns .....25
- IClean Immunoaffinity Columns.....25
- Supplementary Products.....26

## GENETICALLY MODIFIED ORGANISMS (GMO)..... 29

- Eurofins Technologies GMO Kits .....29
- SpeciesScreen RT Kits (Qualitative Real-Time PCR, LR+HR) .....30
- SpeciesIdent RT Kits (Qualitative Real-Time PCR).....30
- SpeciesQuant RT Kits (Qualitative Real-Time PCR).....30
- GMOQuant Verification Kits.....30
- GMOScreen kits for Real-Time PCR (Qualitative Real-Time PCR).....31
- GMOQuant & GMOIdent RT Kits (Quantitative PCR, LR+HR).....32
- Corn .....32
- Cotton.....33
- Soy.....34
- Rapeseed .....35
- Sugarbeet .....35
- Rice .....35
- Flax .....36
- Potato.....36
- Salmon .....36
- Control DNA GMOs .....37
- Control DNA's Plant Species.....39
- Verification and Accessory Kits for Real-Time PCR .....39
- ELISA Kits (GMO) .....42
- Lateral Flow Devices (GMO) .....42
- Lateral Flow Devices (GMO - AP Testing) .....43
- Additional GMO ELISA Kits and Proteins.....43

## DNA AND RNA EXTRACTION 45

- DNA and RNA Extraction Kits .....45
- DNA Extraction and Electrophoresis.....45

## VETERINARY DRUG RESIDUES AND ADDITIVES.. 47

- Eurofins Technologies Veterinary Drug Residues and Additives Kits.....47
- I'Screen Quantitative ELISA Test Kits.....48
- B ZERO® Quantitative ELISA Test Kits .....48
- Other Kits to Detect Veterinary Drug Residues and Additives .....49
- Acrylamide Test Kits.....49

## VETERINARY DIAGNOSTICS.. 51

- Eurofins Technologies Veterinary Diagnostic Kits .....51
- Serological Assays.....52
- Multispecies.....52
- Porcine .....52
- Ruminants .....54
- Rabbit .....55
- Canine .....56
- Feline .....57
- Equine.....57
- Molecular Biology Assays .....60
- PCR kits for Multispecies.....60
- PCR kits for Porcine .....60
- PCR kits for Ruminants .....61
- PCR kits for Avian .....61
- PCR kits for Canine .....61

## ANIMAL SPECIES ..... 63

- Eurofins Technologies Animal Species Kits ..63
- DNAAnimal Kits.....64
- Meat Standards .....65
- Control DNAs.....65

## ENVIRONMENT AND WATER / LIFE SCIENCES .... 69

- Eurofins Technologies Environment and Water Kits .....69
- Eurofins Technologies Life Sciences and R&D.....69
- Algal Toxins.....70
- Algal Toxins Related Product.....71
- Legionella .....71
- Estrogen Kits (US only) .....72
- Industrial Chemicals / Hydrocarbons .....72
- Markers for Bioactivity.....72
- Surfactants .....72
- Pesticides .....73
- Pesticides: Unique Products .....73
- Automated Systems / Readers.....73
- Training / System Installation / Maintenance 73
- Life Sciences / R&D .....74
- AbraMag® Magnetic Purifications Kits .....74
- Magnetic Separator Racks .....74
- AbraMag® Magnetic Beads.....74

## INSTRUMENTS..... 77

- ThunderBolt®.....78
- The Bolt™ .....79

### Product Overview



Test Kits / Methods	ELISA	Lateral flow	PCR	IAC
Food Allergens	•	•		
Vitamin Analysis	•			•
Foodborne Pathogens	•		•	
GMOs	•	•	•	
Mycotoxins	•	•		•
Veterinary Drug Residues	•	•		
Animal Species			•	
Veterinary Diagnostics	•	•	•	
Environmental and Water	•	•		

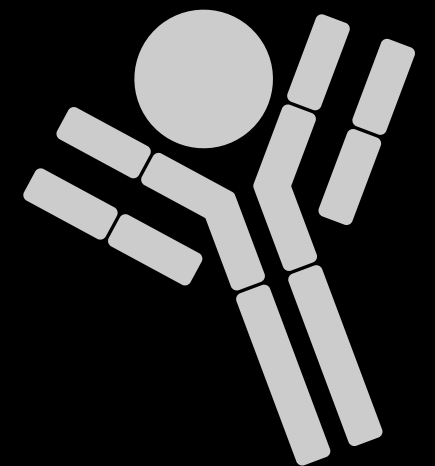
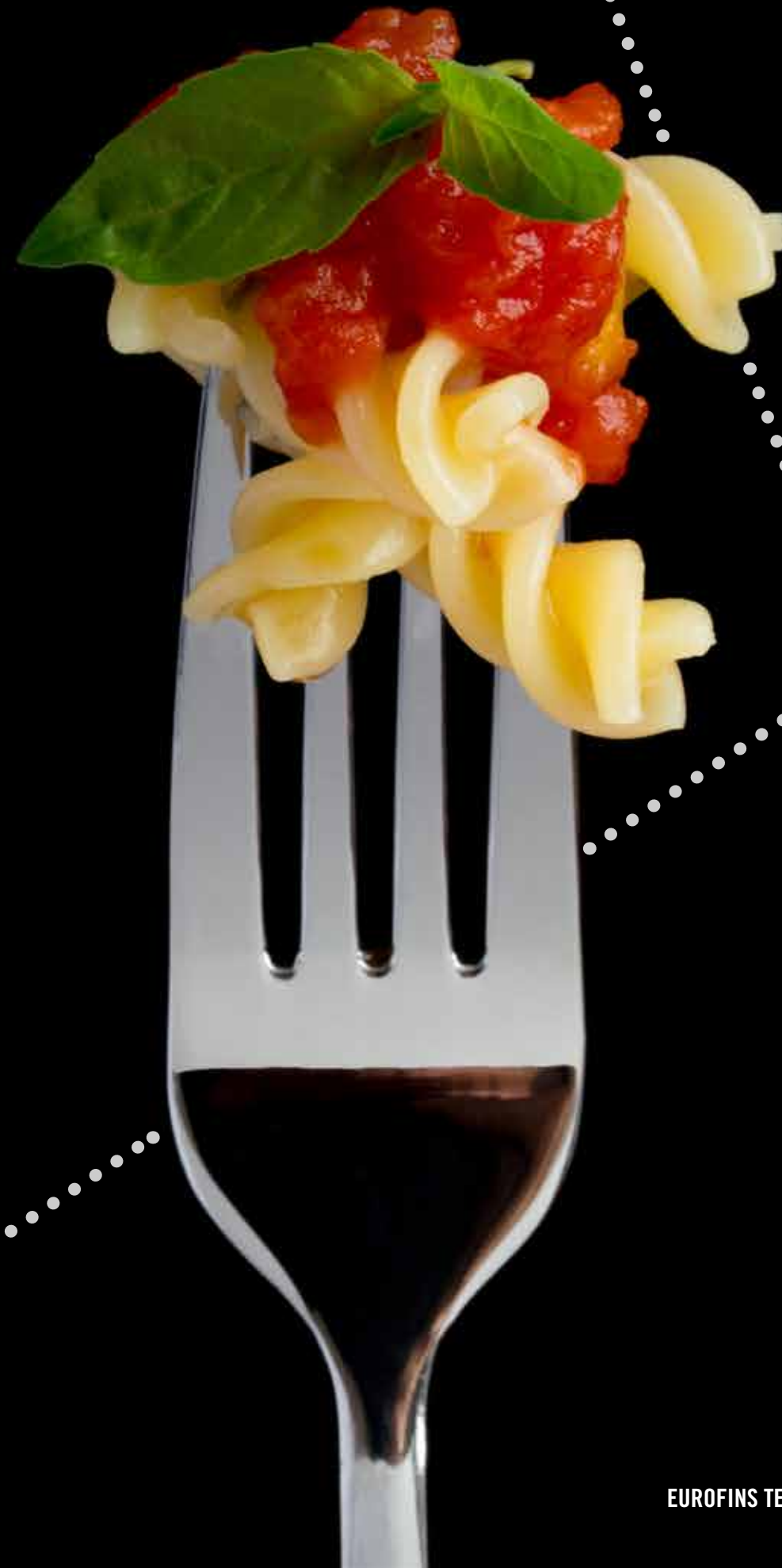
# Find the best solution for your in-house testing operations

## Rapid testing technologies: a growing market

The on-site testing solutions market has seen significant growth over the past few years, with the global market size estimated to be valued at 2bn USD in 2020. This includes not only food and feed analysis but environmental and clinical samples as well. The growth is attributed to the customers' need for fast and reliable test results as these in-house testing laboratories face mounting pressure to meet new regulatory and customer standards, all the while ensuring quality and the timely release of safe product.

## Eurofins Technologies: diagnostic kits, instruments and custom services

Eurofins Technologies is a global provider of fast, reliable, and easy to use diagnostic test kits and instruments in the fields of bioanalytical testing for the food, feed, environmental, biopharma, and clinical industries. The in-house R&D teams have expertise in developing a wide range of innovative methods and applications to meet the testing needs of both research and industry. Our experts at Eurofins Technologies are able to customize programs to serve specific needs with competitive pricing and high quality standards.





# Where We Are

## Eurofins Technologies Contacts



**EUROPE**

**Germany, Austria & Switzerland:**  
Eurofins GeneScan Technologies  
technologies.de@eurofins.com

**Central-East Europe:**  
Eurofins Technologies Hungary  
technologies.hu@eurofins.com

**UK, Nordics and France:**  
technologies.contact@eurofins.com

**Italy:**  
Eurofins Technologies Tecna  
Tecna.ET.Trieste@eurofins.com

**Spain:**  
Eurofins Technologies Ingenasa  
ingenasa@ingenasa.com

**USA**

**North America:**  
Eurofins Technologies North America  
technologies.us@eurofins.com

Eurofins Abraxis  
info.ET.Warminster@eurofinsUS.com

**ASIA**

**Asia Pacific:**  
Eurofins Technologies Singapore  
technologies.apac@eurofins.com

**India:**  
Eurofins Amar  
Immunodiagnosics  
technologies.apac@eurofins.com

**AUSTRALIA**

**Australia & New Zealand:**  
Eurofins Technologies Australia  
technologies.anz@eurofins.com



# ALLERGENS

Food allergens are proteins in food which can trigger allergic, sometimes even life-threatening reactions in sensitized individuals. Even extremely low allergen concentrations are sufficient to cause allergic symptoms. 90% of all food allergies are caused by the following 8 common food categories: milk, eggs, peanuts, fish, shellfish, tree nuts, wheat and soy.

EU directive 2003/89/EC requires food manufacturers to label their products with all ingredients potentially capable of causing allergic reactions. Additionally the directive includes a list of food ingredients classified as being possible allergens or intolerants. Many other countries worldwide have similar legislation requiring food manufacturers to label products potentially containing allergens.

## SENSISpec Allergen Detection ELISA Kits

It is critical to ensure that low-level contaminations are not missed during the on-site analysis, resulting in false negative results being released. Reliable and rapid solutions, such as the allergen ELISA kits offered by Eurofins Technologies will improve and simplify in-house testing processes.

## Key Benefits of the ELISA Kits

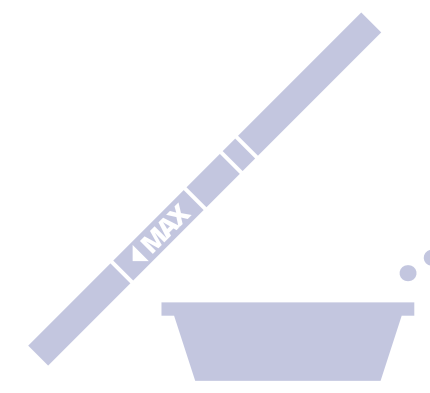
- Quick and sensitive method with low limits of detection
- Quantitative results
- Simple test format
- Comprehensive target portfolio

## SENSIStrip Lateral Flow Tests

Lateral flow assays are well suited for quick in-process sampling. With these easy-to-use strip tests, allergen proteins can be detected in food samples or by swabbing surfaces. Results are delivered in less than 15 minutes without the need of instrumentation.

## Key Benefits of the Lateral Flow Tests

- Results in less than 15 min
- Easy to use in the field
- No laboratory equipment or trained staff needed





## SENSISpec Allergen Detection ELISA Kits



Product	LOD (ppb)	Quantitation range	No. of wells	Article No.
SENSISpec ELISA Almond	200	0.4 - 10 ppm	96	HU0030001
			48	HU0030025
SENSISpec ELISA Beta-Lactoglobulin	1.5	10 - 400 ppb	96	HU0030002
			48	HU0030026
SENSISpec ELISA Casein	40	0.2 - 6 ppm	96	HU0030003
			48	HU0030027
SENSISpec ELISA Cashew	200	2 - 60 ppm	96	HU0030004
			48	HU0030028
SENSISpec ELISA Coconut	400	2 - 30 ppm	96	HU0030005
			48	HU0030029
SENSISpec ELISA Crustaceans (Tropomyosin)	0.9	20 - 400 ppb	96	HU0030006
			48	HU0030030
SENSISpec ELISA Egg White	50	0.4 - 10 ppm	96	HU0030007
			48	HU0030031
SENSISpec ELISA Fish (Parvalbumin)	1400	4 - 100 ppm	96	HU0030008
			48	HU0030032
SENSISpec ELISA Hazelnut	300	1 - 40 ppm	96	HU0030010
			48	HU0030034
SENSISpec ELISA Lupin	200	2 - 30 ppm	96	HU0030011
			48	HU0030035
SENSISpec ELISA Lysozyme	2	25 - 250 ppb	96	HU0030012
			48	HU0030036
SENSISpec ELISA Macadamia nut	100	1 - 40 ppm	96	HU0030013
			48	HU0030037
SENSISpec ELISA Milk	50	0.4 - 10 ppm	96	HU0030014
			48	HU0030038
SENSISpec ELISA Molluscs (Tropomyosin)	1.7	10 - 400 ppb	96	HU0030015
			48	HU0030039
SENSISpec ELISA Mustard	1000	2 - 60 ppm	96	HU0030016
			48	HU0030040
SENSISpec ELISA Ovalbumin	4	25 - 500 ppb	96	HU0030017
			48	HU0030041
SENSISpec ELISA Brazil nut	200	1 - 40 ppm	96	HU0030018
			48	HU0030042
SENSISpec ELISA Peanut	100	1 - 40 ppm	96	HU0030019
			48	HU0030043
SENSISpec ELISA Pecan nut	200	2 - 60 ppm	96	HU0030020
			48	HU0030044
SENSISpec ELISA Pistachio	130	1 - 40 ppm	96	HU0030021
			48	HU0030045
SENSISpec ELISA Sesame	200	2 - 30 ppm	96	HU0030022
			48	HU0030046
SENSISpec ELISA Soy	16	40 - 1000 ppb	96	HU0030023
			48	HU0030047
SENSISpec ELISA Walnut	350	2 - 60 ppm	96	HU0030024
			48	HU0030048

## Supplementary Products

Product	Quantity	Article No.
SENSISpec Wash Buffer	60 ml	HU0030074
SENSISpec Extraction Additive	100 g	HU0030100

## SENSISpec Gluten Detection ELISA Kits



Product	LOD (ppb)	Quantitation range	No. of wells	Article No.
SENSISpec INgezim Gluten R5	3000	3-200 ppm	96	30.GLU.K.2.
SENSISpec INgezim Gluten Quick	3000	3-200 ppm	96	30.GL2.K.2.
SENSISpec INgezim Hydrolyzed Gluten	250	0.25-200 ppm	48	30.GLH.K.2.
SENSISpec INgezim Gluten Semi Q	10000	10-800 ppm	32	30.GSQ.K.2.

## SENSISpec Allergen Spike Solutions



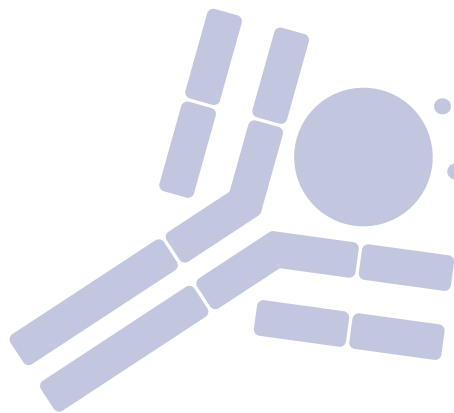
Product	Product description	Quantity	Article No.
SENSISpec Spike Solution Almond	For spiking experiments in combination with the SENSISpec Almond ELISA kit.	3 ml	HU0030049
SENSISpec Spike Solution Beta-Lactoglobulin	For spiking experiments in combination with the SENSISpec Beta-Lactoglobulin ELISA kit.	3 ml	HU0030050
SENSISpec Spike Solution Casein	For spiking experiments in combination with the SENSISpec Casein ELISA kit.	3 ml	HU0030051
SENSISpec Spike Solution Cashew	For spiking experiments in combination with the SENSISpec Cashew ELISA kit.	3 ml	HU0030052
SENSISpec Spike Solution Coconut	For spiking experiments in combination with the SENSISpec Coconut ELISA kit.	3 ml	HU0030054
SENSISpec Spike Solution Tropomyosin (Crustaceans)	For spiking experiments in combination with the SENSISpec Tropomyosin (Crustaceans) ELISA kit.	3 ml	HU0030055
SENSISpec Spike Solution Egg White	For spiking experiments in combination with the SENSISpec Egg White ELISA kit.	3 ml	HU0030056
SENSISpec Spike Solution Fish (Cod)	For spiking experiments in combination with the SENSISpec Fish (Cod) ELISA kit.	3 ml	HU0030057
SENSISpec Spike Solution Gliadin	For spiking experiments in combination with the SENSISpec Gliadin ELISA kit.	3 ml	HU0030058
SENSISpec Spike Solution Hazelnut	For spiking experiments in combination with the SENSISpec Hazelnut ELISA kit.	3 ml	HU0030059
SENSISpec Spike Solution Lupin	For spiking experiments in combination with the SENSISpec Lupin ELISA kit.	3 ml	HU0030060
SENSISpec Spike Solution Lysozyme	For spiking experiments in combination with the SENSISpec Lysozyme ELISA kit.	3 ml	HU0030061
SENSISpec Spike Solution Macadamia nut	For spiking experiments in combination with the SENSISpec Macadamia nut ELISA kit.	3 ml	HU0030062
SENSISpec Spike Solution Milk	For spiking experiments in combination with the SENSISpec Milk ELISA kit.	3 ml	HU0030063
SENSISpec Spike Solution Tropomyosin (Molluscs)	For spiking experiments in combination with the SENSISpec Tropomyosin (Molluscs) ELISA kit.	3 ml	HU0030064
SENSISpec Spike Solution Mustard	For spiking experiments in combination with the SENSISpec Mustard ELISA kit.	3 ml	HU0030065
SENSISpec Spike Solution Ovalbumin	For spiking experiments in combination with the SENSISpec Ovalbumin ELISA kit.	3 ml	HU0030066
SENSISpec Spike Solution Brazil nut	For spiking experiments in combination with the SENSISpec Brazil nut ELISA kit.	3 ml	HU0030067
SENSISpec Spike Solution Peanut	For spiking experiments in combination with the SENSISpec Peanut ELISA kit.	3 ml	HU0030068
SENSISpec Spike Solution Pecan nut	For spiking experiments in combination with the SENSISpec Pecan nut ELISA kit.	3 ml	HU0030069
SENSISpec Spike Solution Pistachio	For spiking experiments in combination with the SENSISpec Pistachio ELISA kit.	3 ml	HU0030070
SENSISpec Spike Solution Sesame	For spiking experiments in combination with the SENSISpec Sesame ELISA kit.	3 ml	HU0030071
SENSISpec Spike Solution Soy Trypsin Inhibitor	For spiking experiments in combination with the SENSISpec Soy Trypsin ELISA kit.	3 ml	HU0030072
SENSISpec Spike Solution Walnut	For spiking experiments in combination with the SENSISpec Walnut ELISA kit.	3 ml	HU0030073

## SENSIStrip Lateral Flow Tests



Product	LOD (ppm) Finished product	LOD ( $\mu\text{g}/\text{cm}^2$ ) Surface	No. of tests	Article No.
SENSIStrip Almond	1	0.2	20	HU0030090
SENSIStrip Casein	20	2	20	HU0030091
SENSIStrip Shellfish	1	0.2	20	HU0030092
SENSIStrip Egg	1	0.2	20	HU0030093
SENSIStrip Fish	1	0.2	20	HU0030094
SENSIStrip Peanut	1	0.2	20	HU0030095
SENSIStrip Soy	10	2	20	HU0030096
SENSIStrip Gluten	2	2	20	HU0030097
SENSIStrip Swab kit			20	HU0030098

Product	LOD (ppm) Finished product	LOD ( $\mu\text{g}/\text{cm}^2$ ) Surface	No. of tests	Article No.
SENSIStrip INgezim Total Milk CROM	2,5	0.125 $\mu\text{g}/\text{swap}$	25	30.MLK.K.42
SENSIStrip INgezim BLG CROM	2.5	0.25 $\mu\text{g}/\text{swap}$	25	30.BLG.K.42
SENSIStrip INgezim Casein CROM	2.5	0.25 $\mu\text{g}/\text{swap}$	25	30.CAS.K.42
SENSIStrip INgezim Ovo CROM	2.5	0.125 $\mu\text{g}/\text{swap}$	25	30.OVO.K.42





# VITAMIN ANALYSIS



Vitamins are essential nutrients for the growth, development, and maintenance of cells, tissues, and organs. Vitamins are classified as either water-soluble or fat-soluble. For humans, there are 13 vitamins: 4 fat-soluble (A, D, E, and K) and 9 water-soluble (8 B vitamins and vitamin C). These nutrients are typically obtained through the consumption of food or dietary supplements, which are subject to vitamin testing in order to meet specific labeling requirements.

Eurofins Technologies offers ELISA kits and immunoaffinity columns (IAC) for the detection and purification of the following vitamins: Biotin (Vitamin H or Vitamin B7), Folic acid and Vitamin B12.

## SENSISpec ELISA Vitamin Kits



Product name	LOD (ppb)	Quantitation range	No. of wells	Article No.
SENSISpec ELISA Vitamin B12	Depends on the sample preparation	0,4-40 ng/ml	96	HU0030075
SENSISpec ELISA Biotin (Vitamin B7)	Depends on the sample preparation	1-25 ng/ml	96	HU0030076
SENSISpec ELISA Folic Acid	Depends on the sample preparation	4-400 ng/ml	96	HU0030077

## SENSIColumn Vitamin Immunoaffinity Columns



Product name	Product description	Quantity	Article No.
SENSIColumn IAC Biotin*	Determination of Biotin in vitamin tablets, liquid vitamin preparations, cell culture extracts etc.	3 ml x 50 columns	EFSA3175
SENSIColumn IAC Vitamin B12	Determination of Vitamin-B12 (Cyanocobalamin) in vitamin tablets, liquid vitamin preparations, cell culture extracts etc.	3 ml x 50 columns	BTCA3185
SENSIColumn IAC Folic Acid	Determination of folic acid in vitamin tablets, liquid vitamin preparations, cell culture extracts etc.	3 ml x 50 columns	BTFS3195
*FITC-streptavidin-conjugate	Conjugate	1 mg x 25 vials	FITC-SA-Kon

# FOOD PATHOGENS



To prevent the spread of foodborne pathogens, rapid and reliable monitoring of food production, storage and trade is essential.

Classical cultural methods for bacteria are time-intensive and laborious. The use of rapid molecular methods is becoming increasingly important for microbiological laboratories. Reliable and particularly sensitive, real-time PCR is an important method in modern food analysis and delivers substantially faster results than the classical detection methods.

In addition to real-time PCR, ELISA (Enzyme Linked Immunosorbent Assay) assays continue to play an important role in food pathogen detection. ELISA kits are characterized by their fast turnaround time, ease of use, and relatively small footprint in the laboratory.

## Eurofins GeneScan Kits

Eurofins GeneScan Technologies PCR and ELISA kits for the detection of food pathogens offer laboratories fast and reliable results. With their flexible design, they are well suited for both high and low volume laboratories.

Most Eurofins GeneScan Technologies kits maintain certifications from internationally recognized organizations (AFNOR and/or AOAC).

## BACGene Real-Time PCR Kits

BACGene kits contain all reagents and consumables for lysis and real-time PCR. Protocols and kit components are simple and easy to use.

A unique multiplex assay for the detection of *Listeria monocytogenes* and *Listeria* species in parallel provides higher flexibility and more meaningful results. This 2-in-1 PCR assay increases the efficiency of microbiological laboratories.

## Key Benefits of the BACGene Kits

- Fast analysis time
- Single enrichment step (sub-sampling for cocoa matrices)
- Simple thermal lysis protocol
- Ready-to-use MasterMix
- Internal positive controls
- Open platform: validated and certified for Agilent AriaMx™ and Bio-Rad CFX96™

## BACSpec ELISA Kits

BACSpec ELISA kits are designed for fast, convenient and sensitive detection of foodborne pathogens. Compared with conventional methods, which can take several days, results are available in less than two days. BACSpec ELISA kits seamlessly integrate with fully automated laboratory solutions, which already exist in many laboratories.

## Key Benefits of the BACSpec Kits

- Rapid detection
- More convenient than conventional methods
- Simple evaluation
- Basic equipment requirement: microplate reader, incubator
- Also appropriate for automated ELISA robots





## BACGene Real-Time PCR Kits



Product	Product description	No. of wells	Article No.
BACGene <i>Salmonella</i> spp.	Kit for 96 or 10x96 lysis and real-time PCR reactions for <i>Salmonella</i> spp. detection.	96 10 x 96	5123221801 5123221810
BACGene <i>Salmonella</i> Tranoroa <b>NEW!</b>	Detection of serovar <i>Salmonella enterica</i> subsp. <i>salamae</i> serovar Tranoroa. Increased control over cross contamination due to UNG digestion in the PCR Workflow. For use with Agilent AriaMx and Bio-Rad CFX96 (Standard and Deep Well).	48	5123222801
BACGene <i>E.coli</i> O157:H7 <b>NEW!</b>	Lysis and real-time PCR reactions for detection of <i>E. coli</i> O157:H7.	96	5123222701
BACGene <i>Listeria</i> Multiplex	Kit for 96 lysis and real-time PCR reactions for multiplex detection of <i>Listeria monocytogenes</i> and <i>Listeria</i> spp.	96 10 x 96	5123221901 5123221910
BACGene <i>Listeria monocytogenes</i>	Kit for 96 lysis and real-time PCR reactions for detection of <i>Listeria monocytogenes</i> .	96 10 x 96	5123222001 5123222010
BACGene <i>Listeria</i> spp.	Kit for 96 lysis and real-time PCR reactions for detection of <i>Listeria</i> spp.	96 10 x 96	5123222101 5123222110

## Enrichment Media for BACGene\*

Product	Quantity	Article No.
Actero™ <i>Listeria</i> Enrichment Media	500 g bottle	5613902001
Actero™ <i>Listeria</i> Enrichment Media	2 kg	5613902002
Actero™ <i>Listeria</i> Enrichment Media	10 kg	5613902010

\*EU only

## Other Kits

Product	Product description	No. wells	Article No.
PREraser BACGene	PREraser DNA BACGene, 2 x 48 reactions for elimination of free DNA from pathogen enrichments. Applicable with all BACGene kits. All reagents and lysis plate included.	2 x 48	5123222201

## BACGene Accessory items



Product	Quantity	Article No.
Blue work rack for lysis		5613901201
Pink work rack for PCR		5613901101
MicroAmp Cap Installing Tool for use with BACGene kits for PCR or for lysis		5613900401
Domed caps for Lysis Plate (DNA extraction), 250 x 8 cap strips	250 x 8 cap strips	5613900301
Lysis plate, for sample preparation, rippable, 1 bag with 5 plates	5 plates	5613901905
Lysis plate, for sample preparation, rippable, 1 box with 25 plates	25 plates	5613901925
Yellow PCR Support Grids, pack with 8 grids	8 grids	5617702208
Blue PCR Support Grids, pack with 8 Grids	8 grids	5617702209
Optical caps, for use with PCR plate, mat of 12 strips, rippable, 1 bag with 10 mats	10 mats	5617701010
Optical caps, for use with PCR plate, mat of 12 strips, rippable, 1 bag with 50 mats	50 mats	5617701050
Optical caps, for use with PCR plates, 300x strips of 8 flat optical caps (sufficient for 25 PCR plates)	300 x 8 cap strips	5617701300
PCR plate, rippable, 1 bag with 5 plates	5 plates	5617700905
PCR plate, rippable, 1 bag with 25 plates	25 plates	5617700925

## BACSpec ELISA Kits



Product	Product description	No. of wells	Article No.
BACSpec <i>Salmonella</i>	ELISA test for <i>Salmonella</i> , plate with 96 wells.	96 5 x 96	4323410101 4323410105
BACSpec <i>Listeria</i>	ELISA test for <i>Listeria</i> , plate with 96 wells.	96 5 x 96	4323410201 4323410205

## Enrichment Medium for BACSpec\*

Product	Product description	Quantity	Article No.
LabM ELEB	Selective enrichment broth for use with Eurofins BACSpec <i>Listeria</i> kit	500 g	LAB589-AGS

\*EU only

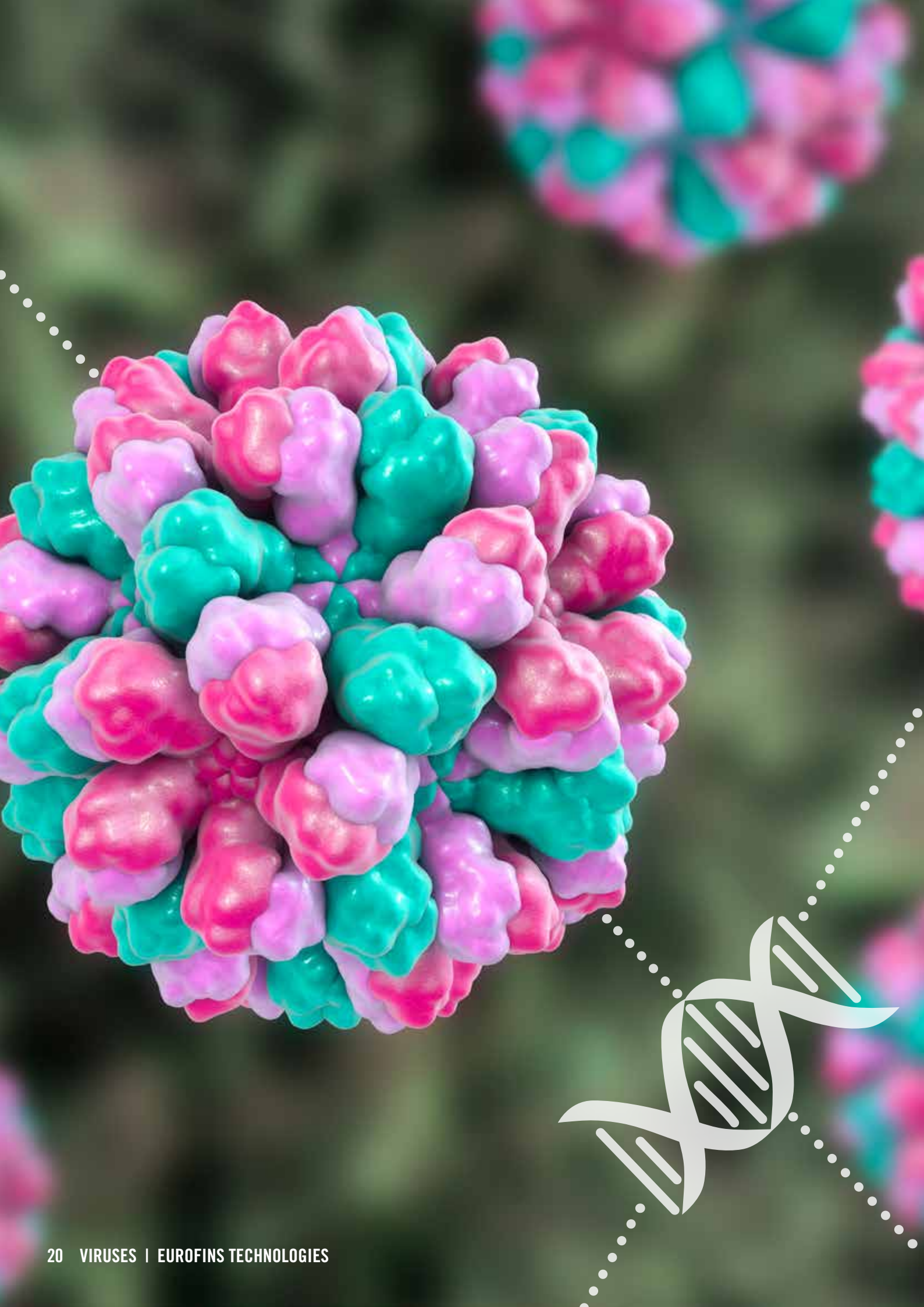
## O157 and non-O157 STEC Detection

Whether your needs are food safety, compliance, quality assurance, or research, Eurofins Abraxis' *E. coli* test kits and antibodies provide an extended offering of affordable test solutions for numerous formats such as ELISA, western blot, lateral flow, agglutination, immunoseparation, flow cytometry, and immunofluorescence.

Product	Product Format	Quantity	Article No.
<i>E. coli</i> O26	Latex Agglutination	50 tests	541000
<i>E. coli</i> O45	Latex Agglutination	50 tests	541010
<i>E. coli</i> O103	Latex Agglutination	50 tests	541020
<i>E. coli</i> O104:H4	Latex Agglutination	50 tests	541060
<i>E. coli</i> O111	Latex Agglutination	50 tests	541030
<i>E. coli</i> O121	Latex Agglutination	50 tests	541040
<i>E. coli</i> O145	Latex Agglutination	50 tests	541050
<i>E. coli</i> O157:H7	Latex Agglutination	50 tests	541070
<i>E. coli</i> O157:H7	Latex Agglutination	100 tests	54107C
<i>E. coli</i> O26	Immunomagnetic Beads	2 ml	543000
<i>E. coli</i> O45	Immunomagnetic Beads	2 ml	543010
<i>E. coli</i> O103	Immunomagnetic Beads	2 ml	543020
<i>E. coli</i> O104:H4	Immunomagnetic Beads	2 ml	543060
<i>E. coli</i> O111	Immunomagnetic Beads	2 ml	543030
<i>E. coli</i> O121	Immunomagnetic Beads	2 ml	543040
<i>E. coli</i> O145	Immunomagnetic Beads	2 ml	543050
<i>E. coli</i> O157:H7	Immunomagnetic Beads	2 ml	543070

## Shiga Toxins

Product	Product format	Quantity	Article No.
Shiga Toxin 1 (STX 1)	ELISA Plate	96 tests	542000
Shiga Toxin 2 (STX 2)	ELISA Plate	96 tests	542010



# VIRUSES

Due to a large number of viral food-related outbreaks, the detection of viruses in food is an important issue in food safety. Oftentimes even low concentrations of a virus can lead to severe health consequences, such as gastrointestinal or liver infections.

The VIRSeek Solution offers an all-inclusive, ISO-compliant workflow from the RNA extraction to the specific detection of norovirus genogroups I norovirus genogroups II and hepatitis A virus. In addition the process control murine norovirus (MNV) ensures the correct extraction procedure and detection of the viruses throughout.

Each of the VIRSeek Solution kits can be used individually or as part of the comprehensive workflow.

## VIRSeek Solution (Viral Foodborne Pathogen Detection)

### VIRSeek Qualitative Real-Time RT PCR

Product	Product description	No. of tests	Article No.
VIRSeek Food Hepatitis A Virus (HAV)	Real-time RT-PCR rapid detection of Hepatitis A virus (HAV) in food samples. Validated for AriaMx and CFX96 Touch (Standard and Deep Well).	48	5728200101
VIRSeek Food Norovirus Genogroup I (NoVGI)	Real-time RT-PCR rapid detection of Norovirus Genogroup I (NoVGI) in food samples. Validated for AriaMx and CFX96 Touch (Standard and Deep Well).	48	5728200201
VIRSeek Food Norovirus Genogroup II (NoVGII)	Real-time RT-PCR rapid detection of Norovirus Genogroup II (NoVGII) in food samples. Validated for AriaMx and CFX96 Touch (Standard and Deep Well).	48	5728200301

### VIRSeek RNA Extraction

Product	Product description	No. of tests	Article No.
VIRSeek RNAExtractor Food	Extraction of viral RNA via silica-coated magnetic beads from different food products (incl. soft fruit, leaf, stem and bulb vegetables, bottled water and bivalve molluscan shellfish).	48 x 500 µL or 96 x 250 µL sample input volume	5524400101

### VIRSeek Food Process Control

Product	Product description	No. of tests	Article No.
VIRSeek Food Murine Norovirus (MNV) Process Control	Detection of Murine Norovirus (MNV)/ Process Control Virus in food samples. Validated for AriaMx and CFX96 Touch (Standard and Deep Well).	49	5728200401





# MYCOTOXINS

The term “mycotoxin” identifies a family of toxic secondary metabolites produced by moulds. Hundreds of mycotoxins exist in nature, however only a select few are relevant to the agro-food industry: aflatoxins, deoxynivalenol, fumonisins, ochratoxin, T-2 and HT-2 toxins and zearalenone.

Animals consuming feed contaminated with mycotoxins not only suffer, but, begin a domino-effect creating significant economic losses within the whole livestock industry. These compounds have reportedly been associated with various human and animal diseases and they are a well-established threat for grains and other cultivations.

Mycotoxins are relevant not only in grains, coffee, cocoa, wine and spices, but are also a concern for the dairy industry, in particular for the presence of aflatoxin M<sub>1</sub>. Furthermore, new toxins and isoforms known as masked mycotoxins have been discovered in recent years and are a growing concern.

## Eurofins Technologies Mycotoxin Kits

Eurofins Technologies provides different product lines to suit all needs for the reliable and effective mycotoxins analysis in cereals, feed, wine, coffee, spices as well as its international-renowned ELISA kits for aflatoxin M<sub>1</sub> in milk and dairy products.

### Screening Tools

- *B ZERO*<sup>®</sup>: ELISA test kits for low analytical volumes, no calibration curve; results in less than 20 min
- *Celer*<sup>®</sup>: fast ELISA test kits for rapid screening
- *I' Screen*: accurate, precise, high sensitive ELISA test kits with low detection limits
- Lateral flow devices for qualitative and quantitative results in 5-10 minutes

### Analytes

- Aflatoxin M<sub>1</sub>
- Total B and G aflatoxins
- Aflatoxin B<sub>1</sub>
- Deoxynivalenol
- Fumonisins
- Ochratoxin A
- T-2 and HT-2 toxins
- Zearalenone

## Eurofins Technologies Immunoaffinity Columns

An extensive portfolio of mycotoxin immunoaffinity columns is available for the majority of regulated mycotoxins. The *SENSIColumn* IACs are simple and reliable sample purification solutions.

### Key Benefits of the *SENSIColumn* Immunoaffinity Columns

- Excellent flow behaviour
- Extremely robust
- Easy enrichment guaranteed
- Highly specific purification with monoclonal antibodies
- Availability of specific columns and “combi” columns for mycotoxins groups
- Wide range of application for various matrices
- Multi-analyte IACs for LC-MS/MS application
- Long shelf life
- Fast (15 to 30 min)



## B ZERO® Quantitative ELISA Test Kits



Product	Specificity	Product description	No. of wells	Article No.
B ZERO AFLA B1	Aflatoxin B1	Specific assay for aflatoxin B1 detection in cereals, silages, mashes, feed, cottonseed, spices and nuts.	96	HU0040005
			48	HU0040025
B ZERO AFLA M1 500	Aflatoxin M1	ELISA test kit for the quantitative detection of aflatoxin M1 in milk according to the Codex Alimentarius regulation (FDA action limit).	96	HU0040091
			192	HU0040043
B ZERO AFLA M1	Aflatoxin M1	Specific assay for aflatoxin M1 in milk.	96	HU0040003
			48	HU0040023
B ZERO DON v2	Deoxynivalenol	Assay for deoxynivalenol detection in cereals, feed and DDGSs.	48	HU0040028
			96	HU0040008
B ZERO H2DON	Deoxynivalenol	Water-based ELISA for deoxynivalenol quantitative screening (Available next month)	48	<b>NEW!</b>
			96	<b>NEW!</b>
B ZERO ZEA	Zearalenone	Assay to detect zearalenone in cereals, feed and DDGSs.	48	HU0040027
B ZERO FUMO	Fumonisin	Assay for the detection of total fumonisins (fumonisin B1, B2 and B3) in cereals.	48	HU0040034
			48	HU0040035
B ZERO OCHRA	Ochratoxin	ELISA test kit for the detection of ochratoxin in cereals and feed	24	HU0040095
			48	HU0040036
B ZERO T2	T-2 and HT-2 toxins	Assay designed to detect T-2 and HT-2 toxins in cereals and feed	48	HU0040036
			24	HU0040096

## Celer® Quantitative ELISA Test Kits



Product	Specificity	Product description	No. of wells	Article No.
Celer® AFLA B1	Aflatoxin B1	Specific assay for aflatoxin B1 in cereals, silages, mashes, feed, cottonseed, spices, dried fruits and nuts.	96	HU0040004
			192	HU0040044
Celer® AFLA	Aflatoxins	Assay designed for the detection of total aflatoxins in cereals, feed, cottonseed, spices, dried fruits and nuts.	48	HU0040031
			96	HU0040011
Celer® AFLA M1 500	Aflatoxin M1	Specific assay for aflatoxin M1 in milk according to the Codex Alimentarius regulation (FDA action limit).	96	HU0040081
			48	HU0040029
Celer® DON	Deoxynivalenol	Assay for deoxynivalenol detection in cereals, feed and DDGSs.	96	HU0040009
			192	HU0040049
Celer® H2DON	Deoxynivalenol	Water-based ELISA kit for the quantitative screening of deoxynivalenol	48	<b>NEW!</b>
			96	<b>NEW!</b>
Celer® ZEA	Zearalenone	Assay to detect zearalenone in cereals, feed and DDGSs.	48	HU0040026
			96	HU0040006
Celer® FUMO	Fumonisin	Assay for the detection of total fumonisins (fumonisin B1, B2 and B3) in cereals.	48	HU0040032
			96	HU0040012
Celer® OCHRA	Ochratoxin	Assay for ochratoxin determination in cereals and feed.	48	HU0040033
			96	HU0040013
Celer® T2	T-2 and HT-2 toxins	Assay designed to detect T-2 and HT-2 toxins in cereals and feed.	48	HU0040030
			96	HU0040010
			192	HU0040050

## Smart Strip Lateral Flow Test Kits



Product	Specificity	Product description	No. of tests	Article No.
Smart Strip AFLA B1	Aflatoxin B1	Specific assay for aflatoxin B1	20	MA820
			50	MA850
Smart Strip AFLA	Aflatoxins	Total aflatoxins analysis	20	MA810
			50	MA870
Smart Strip FUMO	Fumonisin	Fumonisin analysis	20	MF800
			50	MF850
Smart Strip ZON	Zearalenone	Zearalenone analysis	20	MZ800
			50	MZ850
Smart Strip DON	Deoxynivalenol	Deoxynivalenol analysis	20	MD800
			50	MD850

## I'Screen Quantitative ELISA Test Kits



Product	Specificity	Product description	No. of wells / Quantity	Article No.
I'Screen AFLA	Aflatoxins	Assay for detecting aflatoxins in cereals, spices, dried fruit and nuts.	96	MA314
			48	MA315
I'Screen AFLA M1	Aflatoxin M1	Assay for detecting aflatoxins M1 in milk, yoghurt and cheese. LOD: Raw Milk 0.005 ppb, Milk Powder 0.05 ppb, Cheese 0.037, Firm cheese 0.12, Yoghurt 0.12	96	HU0040002
I'Screen AFLA M1 milk	Aflatoxin M1	Assay for detecting aflatoxins M1 in milk. LOD: Raw Milk 0.005 ppb, Milk Powder 0.05 ppb	96	HU0040001
			48	HU0040021
I'Screen FUMO	Fumonisin	Assay to detect total fumonisins (fumonisin B1, B2 and B3) in cereals.	96	MF314
			48	MF315
I'Screen OCHRA	Ochratoxin	Assay to detect ochratoxin in cereals, feed, wine and grape, cocoa and green coffee.	96	OR360
			48	OR361

## SENSIColumn Immunoaffinity Columns



Product	Product description	Quantity	Article No.
SENSIColumn IAC Aflatoxin total	Immunoaffinity columns that retain total aflatoxin	3 ml x 50 columns	EFAF3105
SENSIColumn IAC Aflatoxin M1	Immunoaffinity columns that retain aflatoxin M1	3 ml x 50 columns	EFAFM3115
SENSIColumn IAC Ochratoxin	Clean-up of commodity extracts of food and feed samples containing ochratoxin A/B	3 ml x 50 columns	EFOT3125
SENSIColumn IAC Ochratoxin SMART	Specially designed low cost immunoaffinity column with reduces loding capacity for ochratoxin purification.	3 ml x 50 columns	EFOTS3125
SENSIColumn IAC Deoxynivalenol	Immunoaffinity columns that retain deoxynivalenol and separate it from the other substances present in the sample.	3 ml x 50 columns	EFD03135
SENSIColumn IAC Fumonisin	Immunoaffinity columns that retain fumonisins and separate them from the other substances present in the sample.	3 ml x 50 columns	EFFU3145
SENSIColumn IAC Zearalenone	Immunoaffinity columns that retain zearalenone and separate it from the other substances present in the sample.	3 ml x 50 columns	EFZE3155
SENSIColumn IAC Zearalenone SMART	Specially designed low cost immunoaffinity column with reduces loding capacity for ochratoxin purification.	3 ml x 50 columns	EFZES3155
SENSIColumn IAC T2/HT2	Immunoaffinity columns that retain T2 toxin and separate it from the other substances present in the sample.	3 ml x 50 columns	EFTE3165
SENSIColumn IAC Combi Afla+Ochra	Clean-up of commodity extracts of food and feed samples containing aflatoxins and ochratoxins	3 ml x 50 columns	EFCA3215
SENSIColumn IAC Combi Afla+Ochra+Zeara	Clean-up commodity extracts of food and feed samples containing aflatoxins, ochratoxins and zearalenon	3 ml x 50 columns	EFCZ3225
SENSIColumn IAC Combi Deoxynivalenol+Zearalenone	Clean-up of commodity extracts of food and feed samples containing deoxynivalenol and zearalenon	3 ml x 50 columns	EFCD3235
SENSIColumn IAC Combi AOZDFT all in one for LC-MS/MS	Simultaneous extraction of aflatoxins, ochratoxins, zearalenon, deoxynivalenol, fumonisins and T2-Toxin in food and feed stuffs	3 ml x 50 columns	EFCM3265
SENSIColumn IAC Ergot Alkaloids	Clean-up of commodity extracts of food and feed samples containing 12 priority ergot alkaloids	3 ml x 50 columns	EFLS3275

## IClean Immunoaffinity Columns

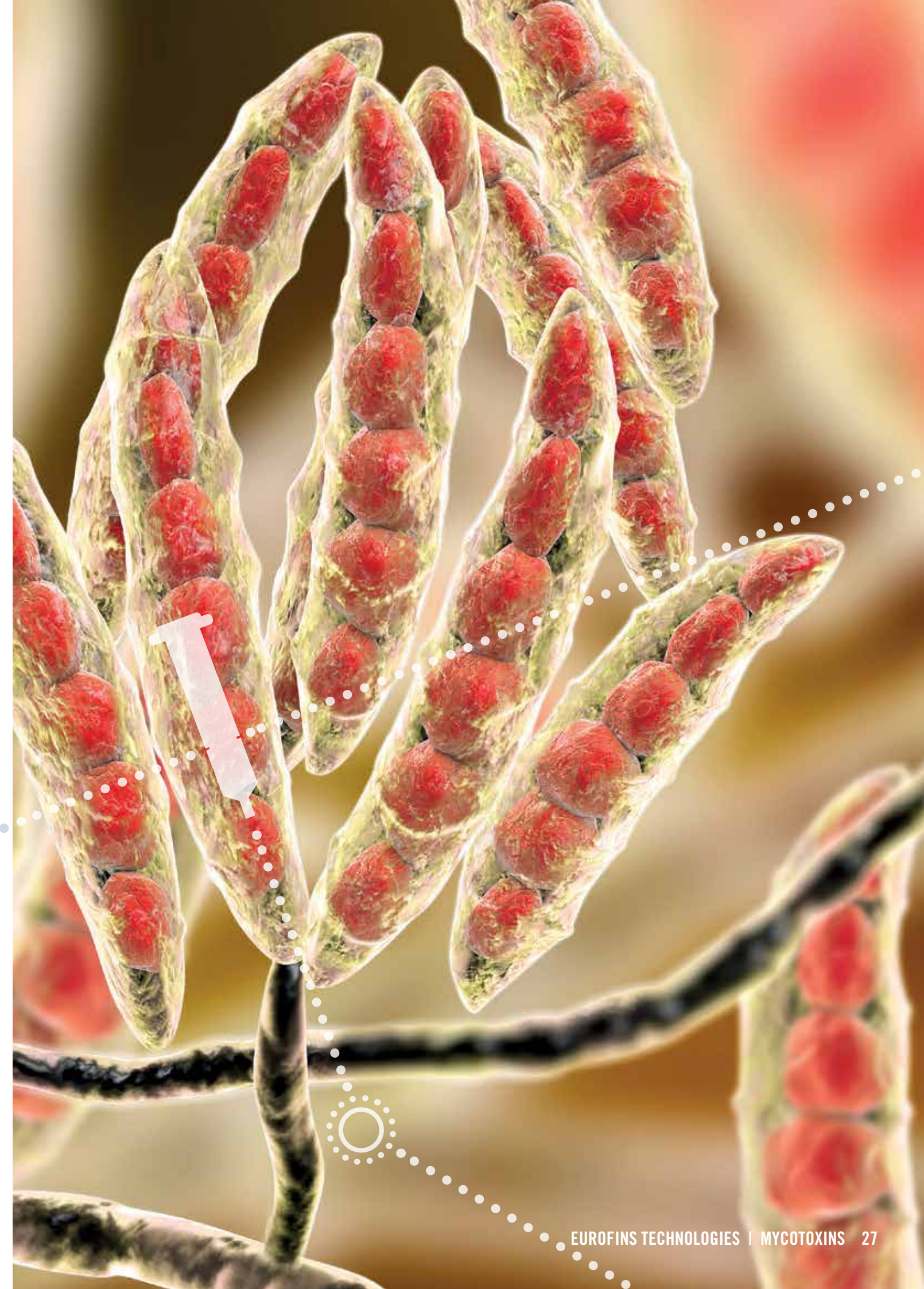


Product	Specificity	Product description	No. of tests	Article No.
IClean C AFLA M1	Aflatoxin M1	Immunoaffinity columns that retain aflatoxin M1	25	IA801



## Supplementary Products

Product	Specificity	Product description	No. of tests / Quantity	Article No.
EasyPur AFLA	Aflatoxins	Resin for the purification of aflatoxins from complex matrices.	25	AC010
Mycotoxin Extraction Solution A	Mycotoxins	Solution for the extraction of mycotoxins in cereals and other commodities.	500 ml	HU0040103
Milk diluent		2 bottles containing 12 ml of negative milk (standard 0 milk)	12 ml	HU0040101
Extraction Buffers for Afla M1 in cheese samples	Afla M1 in cheese	1 bottle containing 12 ml of negative milk (0 standard). 2) Extraction buffer: 1 bottle containing 20 ml solution.	12 ml (Milk diluent) 20 ml (Extraction buffer)	HU0040102
SENSISpec Extraction Additive		Extraction additive for wine samples in combination with the SENSISpec Ochratoxin A Rapid ELISA	100 g	HU0030100
Enzyme conjugate for Celer® AFLA B1 and B ZERO® AFLA B1		Enzyme conjugate for Celer® AFLA B1 and B ZERO® AFLA B1	14 mL	HU0040104
Enzyme conjugate for Celer® DON v3 & B ZERO DON v2		Enzyme conjugate for Celer® DON v3 & B ZERO DON v2	14 mL	HU0040105
Enzyme conjugate for Celer® AFLA		Enzyme conjugate for Celer® AFLA	14 mL	HU0040106
Enzyme conjugate for Celer® ZEA & B ZERO ZEA		Enzyme conjugate for Celer® ZEA & B ZERO ZEA	14 mL	HU0040107
Enzyme conjugate for Celer® FUMO & B ZERO FUMO		Enzyme conjugate for Celer® FUMO & B ZERO FUMO	14 mL	HU0040108
Enzyme conjugate for Celer® T2 & B ZERO T2		Enzyme conjugate for Celer® T2 & B ZERO T2	14 mL	HU0040109
Enzyme conjugate for Celer® OCHRA & B ZERO OCHRA		Enzyme conjugate for Celer® OCHRA & B ZERO OCHRA, 14 mL	14 mL	HU0040110







# GENETICALLY MODIFIED ORGANISMS (GMO)

Cultivation of genetically modified (GM) crops has increased significantly around the globe over the years. This increase in production has been combined with a complex and ever evolving global regulatory approval process for GM products, therefore requiring the testing of food and agricultural products for genetically modified content in order to facilitate international trade.

GMO analysis can be performed in the field or in a testing laboratory and determination of the appropriate test method is dependent on the nature of the sample, the required level of sensitivity of the assay, and the intended market for the product.

Eurofins Technologies offers a broad range of GMO testing products that cover both the rapid onsite / field testing as well as comprehensive molecular analysis.

## Eurofins GeneScan Real-Time PCR GMO Kits

Eurofins GeneScan is recognised worldwide for its expertise and leading performance in the field of bio-molecular testing for GMOs. Our PCR methods for GMO screening, identification and quantification have been adapted to the volatile and current market situation and are verified daily.

Kits are available both for conventional PCR or real-time PCR, for screening, identification and quantification.

Real-Time PCR Kits

- *GMOScreen*: modular system of intelligent screening and multiplex screening kits
- *GMOIdent*: kits for precise identification or exclusion of single GMO varieties in soy, maize, rice, sugar beet, cotton, linseed or potato
- *GMOQuant*: quantitative methods to identify and to quantitate the GMO content in order to comply with labelling and marketability rules
- Verification kits: offered for *GMOScreen RT 35S/NOS/FMV* and *GMOQuant* kits, with all components required for the EURL recommended verification of the corresponding kit

## Key Benefits

- Broadest portfolio of GMO testing kits worldwide
- Excellent overview of the global GMO approval and cultivation situation
- Regular adaptation of the detection kits portfolio to market demands

## ELISA Kits and Lateral Flow Devices for GMO Detection

The ELISA test kits provide an accurate and reliable solution to verify the presence or the absence of inserted trait in individual leaf, seed or bulk grain.

Our lateral flow devices enable a rapid on-site GMO detection in cotton, corn, soybean and mustard / canola.



## SpeciesScreen RT Kits (Qualitative Real-Time PCR, LR+HR)



Product	Product description	No. of tests	Article No.
SpeciesScreen RT IPC Plant	Kit with 96 RT-PCR rxns for general plant DNA detection with internal positive control. All reagents and controls included.	96 10 x 96	5421229401 5421229410

## SpeciesIdent RT Kits (Qualitative Real-Time PCR)

Product	Product description	No. of tests	Article No.
SpeciesIdent RT IPC Corn/ Maize (LR)	Kit with 96 RT-PCR rxns for corn/maize species detection with internal positive control (IPC). All reagents and controls included.	96	5421229901
SpeciesIdent RT IPC Soy (LR)	Kit with 96 RT-PCR rxns for soy species detection with internal positive control (IPC). All reagents and controls included.	96	5421232001
SpeciesIdent RT IPC Cotton (LR)	Kit with 96 RT-PCR rxns for cotton species detection with internal positive control (IPC). All reagents and controls included.	96	5421234001
SpeciesIdent RT IPC Rice (LR/HR)	Kit with 96 RT-PCR rxns for rice species detection with internal positive control (IPC). All reagents and controls included.	96	5421229601
SpeciesIdent RT IPC Rapeseed (LR)	Kit with 96 RT-PCR rxns for rapeseed species detection with internal positive control (IPC).	96	5421229201
SpeciesIdent RT IPC CaMV (LR/HR)	Kit with 96 RT-PCR rxns for Cauliflower Mosaic Virus species detection with internal positive control (IPC). All reagents and controls included.	96	5421229701
SpeciesIdent RT IPC Agrobacterium tumefaciens (LR)	Kit with 96 RT-PCR rxns for Agrobacterium tumefaciens species detection with internal positive control (IPC). All reagents and controls included.	96	5421229801
SpeciesIdent RT IPC Figwort Mosaic Virus (LR)	Kit with 96 RT-PCR rxns for Figwort Mosaic species detection with internal positive control (IPC). All reagents and controls included.	96	5421230001

## SpeciesQuant RT Kits (Qualitative Real-Time PCR)

Product	Product description	No. of samples	Article No.
SpeciesQuant Botanical Impurity Soy (NR)	Kit for DNA extraction and real-time PCR quantification (on MX3000P/MX3500P) of soy as bot. impurity in max. 44 samples	44	5421231001
SpeciesQuant Botanical Impurity Soy (LR)	DNA extraction and real-time PCR quantification of soy. Validated on ABI 7500/Fast and CFX96	44	5421233001
1% Reference sample for Botanical Impurity Soy <b>NEW!</b>	2 g of 1% (w/w) soybean in maize flour; suitable for SpeciesQuant Botanical Impurity Soy (LR), Cat # 5421233001		5112702001

## GMOQuant Verification Kits

Product	Product description	Article No.
Verification kit for GMOQuant Screen 35S/Soy and RoundupReady Soy	Verification kit for GMOQuant RoundupReady Soy and GMOQuant Screen 35S/Soy kits (two corresponding GMOQuant kits needed additionally)	5121299901
Verification kit for GMOQuant NK603 Corn and GMOQuant Screen 35S/Corn kits	Verification kit for GMOQuant NK603 Corn and GMOQuant Screen 35S/Corn kits (two corresponding GMOQuant kits needed additionally)	5121299902
Verification kit for GMOQuant MON863 Corn kits	Verification kit for GMOQuant MON863 Corn kits (two corresponding GMOQuant kits needed additionally)	5121299903
Verification kit for GMOQuant MON810 Corn kits	Verification kit for GMOQuant MON810 Corn kits (two corresponding GMOQuant kits needed additionally)	5121299904
Verification kit for GMOQuant GA21 Corn kits	Verification kit for GMOQuant GA21 Corn kits (two corresponding GMOQuant kits needed additionally)	5121299905

## GMOScreen Kits for Real-Time PCR (Qualitative Real-Time PCR)



Product	Product description	No. of tests	Article No.
GMOScreen RT 35S/NOS/ ABI IPC (LR) for ABI 7500 (Fast)	96 RT-PCR reactions, up to 46 samples per plate. Multiplex screening of p35s, tNOS, AgroBorder II with internal positive control.	96 10 x 96	5421227101 5421227111
GMOScreen RT 35S/ NOS/ABI IPC (NR) for MX3005P, AriaMX and CFX96	96 RT-PCR reactions, up to 46 samples per plate. Multiplex screening of p35s, tNOS, AgroBorder II with internal positive control.	96 10 x 96	5421227102 5421227112
GMOScreen RT IPC (LR) 35S/NOS/FMV for ABI 7500 (Fast)	96 RT-PCR reactions, up to 44 samples per plate. Multiplex screening of pFMV, p35s and tNOS in a single tube with internal positive control (IPC).	96 10 x 96	5421220301 5421220311
GMOScreen RT IPC (NR) 35S/NOS/FMV for MX3005P/MX3000P, AriaMX, CFX96 and LC480	96 RT-PCR reactions, up to 44 samples per plate. Multiplex screening of pFMV, p35s and tNOS with internal positive control.	96 10 x 96	5421220302 5421220312
GMOScreen RT IPC (LR) CaMV 35s Terminator	96 RT-PCR reactions. Detection of CaMV 35S terminator sequences with internal positive control (IPC).	96	5421227105
GMOScreen RT IPC (LR) GM Soy I for ABI 7500 (Fast)	GMOScreen for comprehensive GMO detection in soy (LR) on ABI 7500 Fast, contains GMOScreen RT IPC 35S/ NOS/FMV, GMOScreen RT IPC CV127/SAMS-ALS and GMOScreen RT IPC AgroBorder I/II.	96	5421226701
GMOScreen RT IPC (NR) GM Soy I for MX3005P/MX3000P and LC480	GMOScreen for comprehensive GMO detection in soy (NR) on MX3005P/MX3000P and LC480: contains GMOScreen RT IPC 35S/NOS/FMV, GMOScreen RT IPC CV127/SAMS-ALS and GMOScreen RT IPC AgroBorder I/II.	96	5421226702
GMOScreen RT IPC (LR) 35S/NOS	96 RT-PCR reactions, up to 44 samples per plate. Duplex PCR with internal positive control. Validated for ABI7500/ Fast, MX3005P/MX3000P and LC480.	96	5421220001
GMOScreen RT 35S/IPC and NOS/IPC (LR/HR+)	2 x 96 RT-PCR reactions, for up to 46 samples. For use on low-ROX and high-ROX cyclers with FAM and VIC filters.	2 x 96	5421220002
GMOScreen RT (LR/HR+) 35S/IPC and NOS/IPC and FMV/IPC	3 x 96 RT-PCR reactions, for up to 46 samples. For use on low-ROX and high-ROX cyclers with FAM and VIC filters.	3 x 96	5421220303
GMOScreen RT 35S/NOS IPC S (LR)	48 multiplex rxns p35S, tNOS and IPC for ABI 7500, MX3005, LC480	48	5421220048
GMOScreen RT FMV/IPC (LR/HR+)	96 RT-PCR reactions, for up to 46 samples. For low- and high-ROX cyclers with FAM/VIC filters.	96	5421220501
GMOScreen RT IPC (LR) AgroBorder I/II	96 RT-PCR reactions, for up to 44 samples.	96	5421226201
GMOScreen RT IPC (LR) bar/pat	96 RT-PCR reactions, for up to 44 samples.	96	5421225001
GMOScreen RT IPC (LR) SAMS-ALS	96 RT-PCR reactions, for up to 44 samples.	96	5421226501
GMOScreen RT IPC (LR) CV127/SAMS-ALS	96 RT-PCR reactions, for up to 44 samples.	96	5421225601
GMOScreen RT IPC (LR) Event GA21/PMI-NOS	96 multiplex-RT-PCR rxns, for MX3005P, AriaMX, ABI7500 and CFX96 Touch	96	5421227103
GMOScreen RT IPC (LR) CsVMV	96 multiplex-RT-PCR rxns, for up to 44 samples. Screening for i.e. DAS-68416-4, DAS-44406-6, DAS-81419-2 soy. Validated for ABI7500/Fast, MX3005P/ MX3000P, AriaMX, CFX96 and LC480.	96	5421226401
GMOScreen RT IPC (LR/ HR+) NOS-NPT	96 multiplex-RT-PCR rxns, for up to 44 samples. Validated for ABI7500/Fast, MX3005P/ MX3000P and ABI7900.	96	5421226801
GMOScreen RT IPC (LR/ HR+) 35S-NPT	96 multiplex-RT-PCR rxns, for up to 44 samples. Validated for ABI7500/Fast, MX3005P/ MX3000P and ABI7900.	96	5421226901
GMOScreen RT IPC (NR) PVGT/NOS/NPTII/PAT	96 multiplex RT-PCR rxns, Multiplex screening of PVGT, tNOS, nptII and pat (syn) incl. IPC for MX3005/MX3000P.	96	5421220401
GMOScreen RT (UMM) Cry1Ab/Ac	96 RT-PCR reactions, up to 44 samples per plate.	96	5421225201

## GMOQuant & GMOIdent RT Kits (Quantitative PCR, LR+HR) Corn



GMO	GMOQuant LR Product name / Art. No.	GMOQuant HR Product name / Art. No.	GMOIdent RT Kits Product name / Art.No
35S Screen Corn 1	GMOQuant (LR) 35S Screen Corn 1	GMOQuant (HR) 35S Screen Corn 1	
Article No.	5125203501	5125200601	
VCO-01981-5 / DAS-40278-9 / Ly038 Corn			GMOIdent RT IPC VCO-01981-5 / DAS-40278-9 / Ly038 Corn IPC (NR)
Article No.			5421230502
VCO-01981-5 / DAS-40278-9 / Ly038 Corn			GMOIdent RT IPC VCO-01981-5 / DAS-40278-9 / Ly038 Corn IPC (LR)
Article No.			5421230501
MIR162/MIR604 Corn	GMOQuant Duplex (LR) MIR162/MIR604 Corn		
Article No.	5125222201		
35S/GA21 Corn	GMOQuant Duplex (LR) 35S/GA21 Corn		
Article No.	5125222801		
Roundup Ready 2™ Event NK603	GMOQuant (LR) Event NK603 Corn	GMOQuant (HR) Event NK603 Corn	GMOIdent RT IPC Event NK603 Corn
Article No.	5125204401	5125204301	5421221001
Roundup Ready™ Event GA21	GMOQuant (LR) Event GA21 Corn	GMOQuant (HR) Event GA21 Corn	GMOIdent RT IPC Event GA21 Corn
Article No.	5125204601	5125204501	5421222501
Agrisure RW™ Event MIR604	GMOQuant (LR) Event MIR604 Corn	GMOQuant (HR) Event MIR604 Corn	GMOIdent RT IPC Event MIR604 Corn 3
Article No.	5125206401	5125205501	5421221101
Agrisure™ CB/LL Event Bt11	GMOQuant (LR) Event Bt11 Corn	GMOQuant (HR) Event Bt11 Corn	GMOIdent RT Event Bt11 Corn
Article No.	5125206501	5125209901	5421223201
YieldGard VT RW™ Event MON88017	GMOQuant (LR) Event MON88017 Corn	GMOQuant (HR) Event MON88017 Corn	GMOIdent RT IPC Event MON88017 Corn
Article No.	5125207301	5125207401	5421221801
YieldGard VT Pro™ Event MON89034	GMOQuant (LR) Event MON89034 Corn	GMOQuant (HR) Event MON89034 Corn	GMOIdent RT IPC Event MON89034 Corn
Article No.	5125206701	5125206901	5421221601
YieldGard™, MaizeGard™ Event MON810	GMOQuant (LR) Event MON810 Corn	GMOQuant (HR) Event MON810 Corn	GMOIdent RT IPC Event MON810 Corn
Article No.	5125207801	5125201501	5421221301
Agrisure Viptera™ Event MIR162	GMOQuant (LR) Event MIR162 Corn	GMOQuant (HR) Event MIR162 Corn	GMOIdent RT Event MIR162 Corn
Article No.	5125209701	5125221501	5421224801
KnockOut™, NatureGard™ Event Bt176	GMOQuant (LR) Event Bt176 Corn	GMOQuant (HR) Event Bt176 Corn	GMOIdent RT Bt176 Corn
Article No.	5125209401	5125209801	5421240301
LibertyLink™	GMOQuant (LR) LibertyLink™ Corn	GMOQuant (HR) LibertyLink™ Corn	
Article No.	5125207701	5125201601	
Herculex I™ Event TC1507	GMOQuant (LR) Event TC1507 Corn	GMOQuant (HR) Event TC1507 Corn	GMOIdent RT IPC Event TC1507 Corn
Article No.	5125209301	5125202301	5421222401
Herculex RW™ Event DAS-59122-7	GMOQuant (LR) Event DAS-59122-7 Corn	GMOQuant (HR) Event DAS-59122-7 Corn	GMOIdent RT IPC Event DAS-59122-7 Corn
Article No.	5125208201	5125202901	5421221201
YieldGard Rootworm™, MaxGard™ Event MON863	GMOQuant (LR) Event MON863 Corn	GMOQuant (HR) Event MON863 Corn	GMOIdent RT IPC Event MON863 Corn
Article No.	5125208001	5125208101	5421221701
Enogen™ Event 3272	GMOQuant (LR) Event 3272 Corn	GMOQuant (HR) Event 3272 Corn	GMOIdent RT IPC Event 3272 Corn
Article No.	5125207601	5125221301	5421224901

GMO	GMOQuant LR Product name / Art. No.	GMOQuant HR Product name / Art. No.	GMOIdent RT Kits Product name / Art.No
LibertyLink™ Event T25			GMOIdent RT IPC Event T25 Corn
Article No.			5421230901
Mavera™			GMOIdent RT IPC Ly038 Corn
Article No.			5421225201
DroughtGard™ Event MON87460	GMOQuant RT IPC (LR) Event MON87460 Corn		GMOIdent RT IPC Event MON87460 Corn
Article No.	5125222501		5421225801
Enlist™ Event DAS-40278-9	GMOQuant RT IPC (LR) Event DAS-40278-9 Corn		GMOIdent RT IPC Event DAS-40278-9 Corn
Article No.	5125222701		5421226001
Agrisure Duracade™ Event 5307 Corn	GMOQuant (LR) Event 5307 Corn		GMOIdent RT IPC (LR/HR) Event 5307 Corn
Article No.	5125222401		5421230801
StarLink™	GMOQuant (LR) StarLink™ Corn	GMOQuant (LR) StarLink™ Corn	
Article No.	5125209601	5125201801	
Event VCO-01981-5			GMOIdent RT IPC Event VCO-01981-5 Corn (LR)
Article No.			5421230201
Roundup Ready™ Event MON87427	GMOQuant (LR) Event MON87427 Corn		GMOIdent RT IPC Event MON87427 Corn
Article No.	5421230301		5421230301
LibertyLink™ Event T14			GMOIdent RT IPC Event T14Corn
Article No.			5421230401

## Cotton

Event	GMOQuant LR Product name /Art. No.	GMOQuant HR Product name / Art. No.	GMOIdent RT Kits Product name / Art.No
WideStrike™ Event 3006-210-23	GMOQuant (LR) 3006-210-23 Cotton	GMOQuant (HR) 3006-210-23 Cotton	GMOIdent RT Event 3006-210-23 Cotton
Article No.	5125220901	5125221001	5421224101
WideStrike™ Event 281-24-236	GMOQuant (LR) 281-24-236 Cotton	GMOQuant (HR) 281-24-236 Cotton	GMOIdent RT IPC Event 281-24-236 Cotton
Article No.	5125221101	5125221201	5421224501
Roundup Ready Flex™ Event MON1445			GMOIdent RT Event MON1445 Cotton
Article No.			5421222901
Bollgard II™ Event MON88913			GMOIdent RT Event MON88913 Cotton
Article No.			5421223401
Bollgard™ Event MON531			GMOIdent RT Event MON531 Cotton
Article No.			5421223901
Bollgard II™ Event MON15985			GMOIdent RT Event MON15985 Cotton
Article No.			5421224001
GlyTol™ Event GHB614			GMOIdent RT Event GHB614 Cotton
Article No.			5421224001
VipCot™ COT102			GMOIdent RT IPC (LR/HR+) VIP3Aa Cotton
Article No.			5421226301
LibertyLink™ LLCotton25			GMOIdent RT Event LLCotton25 Cotton
Article No.			5421224101





GMO	GMOQuant LR Product name / Art. No.	GMOQuant HR Product name / Art. No.	GMOIdent RT Kits Product name / Art.No
35S Screen Soy	GMOQuant (LR) 35S Screen Soy	GMOQuant (HR) 35S Screen Soy	
Article No.	5125207201	5125203101	
AgroBorder II Screen Soy	GMOQuant (LR) AgroBorder II Screen Soy	GMOQuant (HR) AgroBorder II Screen Soy	
Article No.	5125222001	5125222101	
35S/AgroBorder II Soy	GMOQuant Duplex (LR) 35S/AgroBorder II Soy		
Article No.	5125222301		
35S/MON89788 Soy	GMOQuant Duplex (LR) 35S/MON89788 Soy		
Article No.	5125210001		
CsVMV / CV127 / DP-356043-5		GMOScreen RT IPC CsVMV / CV127 / DP-356043-5 (NR)	
Article No.		5421227104	
LibertyLink™ Event A2704-12	GMOQuant (LR) Event A2704-12 Soy	GMOQuant (HR) Event A2704-12 Soy	GMOIdent RT IPC Event A2704-12 Soy (LR)
Article No.	5125206801	5125206301	5421226101
Genuity Roundup Ready 2 Yield™ Event MON89788	GMOQuant (LR) Event MON89788 Soy	GMOQuant (HR) Event MON89788 Soy	GMOIdent RT IPC Event MON89788 Soy
Article No.	5125207001	5125207101	5421241101
Optimum™ GAT™ Event DP-356043-5	GMOQuant (UMM*) Event DP-356043-5 Soy		GMOIdent RT (UMM) Event DP-356043-5 Soy
Article No.	5125220201		5421225801
Event MON87701	GMOQuant (UMM*) Event MON87701 Soy		GMOIdent RT Event MON87701Soy
Article No.	5125220301		5421225301
LibertyLink™ Event A5547-127	GMOQuant (UMM*) Event A5547-127 Soy		GMOIdent RT Event A5547-127 Soy
Article No.	5125220601		5421223701
Cultivance™ Event CV127	GMOQuant (UMM*) Event CV127 Soy		GMOIdent RT IPC (LR) Event CV127 Soy
Article No.	5125220701		5421240501
RoundupReady™ Event GTS 40-3-2	GMOQuant (LR) RoundupReady™ Soy	GMOQuant (HR) RoundupReady™ Soy	GMOIdent RT IPC (LR) RoundupReady™ Soy
Article No.	5125203401	5125200401	5421240201
Plenish™ Event DP-305423-1	GMOQuant (UMM*) Event DP-305423-1 Soy		GMOIdent RT IPC (LR) Event DP-305423-1 Soy
Article No.	5125207501		5421240601
Vistive Gold™ Event MON87705	GMOQuant (UMM*) Event MON87705 Soy		GMOIdent RT Event MON87705Soy
Article No.	5125221601		5421225701
Balance™ GT Event FG72 Soy	GMOQuant (LR) <b>NEW!</b> Event FG72 Soy		GMOIdent RT IPC (LR)Event FG72 Soy
Article No.	5125223401		5421240701
Enlist™ Event DAS-68416-4			GMOIdent RT IPC (LR) Event DAS-68416-4 Soy
Article No.			5421226401
Soymega™ Event MON87769	GMOQuant (LR) Event MON87769 Soy		GMOIdent RT IPC (LR) Event MON87769 Soy
Article No.	5125222601		5421230701
Event DAS-44406-6 / DAS-81419-2 / DAS-68416-4 Soy			GMOIdent RT IPC (NR) <b>NEW!</b> Event DAS-44406-6 / DAS-81419-2 / DAS-68416-4 Soy
Article No.			5421240801
Event MON87708/ MON87701/ MON87705 Soy			GMOIdent RT IPC (NR) <b>NEW!</b> MON87708/ MON87701/ MON87705 Soy
Article No.			5421240901

Event SYHT0H2 Soy		GMOIdent RT IPC (LR) <b>NEW!</b> Event SYHT0H2 Soy
Article No.		5421241401
Event MON87708 Soy	GMOQuant (LR) <b>NEW!</b> Event MON87708 Soy	GMOIdent RT IPC (LR) <b>NEW!</b> Event MON87708 Soy
Article No.	5125223301	5421240401
Event MON87751 Soy	GMOQuant (LR) <b>NEW!</b> Event DAS-68416-4 Soy	GMOIdent RT IPC <b>NEW!</b> Event MON87751 Soy
Article No.	5125223201	5421241801
Event DAS-68416-4 Soy		GMOIdent RT IPC (LR) <b>NEW!</b> Event DAS-68416-4 Soy
Article No.		5421240101

## Rapeseed

Event	GMOQuant LR Product name /Art. No.	GMOQuant HR Product name / Art. No.	GMOIdent RT Kits Product name / Art.No
Roundup Ready™ Event RT73	GMOQuant (UMM*) Event RT73 Rapeseed		GMOIdent RT Event RT73 Rapeseed
Article No.	5125208901		5421224401
SeedLink™ Event MS8	GMOQuant (UMM*) Event MS8 Rapeseed		GMOIdent RT Event MS8 Rapeseed
Article No.	5125209001		5421224201
SeedLink™ Event Rf3	GMOQuant (UMM*) Event Rf3 Rapeseed		GMOIdent RT Event Rf3 Rapeseed
Article No.	5125209101		5421224301
LibertyLink™ Event T45	GMOQuant (UMM*) Event T45 Rapeseed		GMOIdent RT IPC Event T45 Canola
Article No.	5125208401		5421223501

## Sugarbeet

Event	GMOQuant LR Product name /Art. No.	GMOQuant HR Product name / Art. No.	GMOIdent RT Kits Product name / Art.No
Roundup Ready™ Event H7-1			GMOIdent RT (IPC) Event H7-1 Sugarbeet
Article No.			5421222801

## Rice

Event	GMOQuant LR Product name /Art. No.	GMOQuant HR Product name / Art. No.	GMOIdent RT Kits Product name / Art.No
LibertyLink™ Event LLRice62	GMOQuant (UMM*) Event LL62 Rice		GMOIdent RT Event LL62 Rice
Article No.	5125209201		5421222001
Event LLRice601			GMOIdent RT Event LL601 Rice
Article No.			5421222101
LibertyLink™ Event LL601, Event LLRice62 and other			GMOIdent RT LibertyLink™ Rice
Article No.			5221103801
LibertyLink™ Event LL601, Event LLRice62 and other			GMOIdent RT S LibertyLink™ Rice (with species control)
Article No.			5221103805
Event Bt63 and other			GMOIdent RT Bt Rice
Article No.			5421221401
Bt Rice & Rice Species Event Bt63 and other			GMOIdent RT Bt Rice (with species control)
Article No.			5421221409



## Flax

Event	GMOQuant LR Product name /Art. No.	GMOQuant HR Product name / Art. No.	GMOIdent RT Kits Product name / Art.No
CDC Triffid™			GMOIdent RT (IPC) FP967 Flax
Article No.			5421222601

## Potato

Event	GMOQuant LR Product name /Art. No.	GMOQuant HR Product name / Art. No.	GMOIdent RT Kits Product name / Art.No
Amflora™ Event EH92-527-1		GMOQuant (HR) Event EH92-527-1 Potato	GMOIdent RT Event EH92-527-1 Potato
Article No.		5125207901	5421223601

## Salmon

Event	GMOQuant LR Product name /Art. No.	GMOQuant HR Product name / Art. No.	GMOIdent RT Kits Product name / Art.No
AquAdvantage™			GMOIdent RT IPC Accelerated Growth Salmon
Article No.			5421230601

## Control DNA GMOs

Product	Quantity	Article No.
Genomic DNA 3272 corn, 10% GMO, made from ERM BF420c (SYN-E3272-5)	100 x 0,15 ml	5211508101
Genomic DNA Bt11 corn, 5% GMO, made from ERM BF412f (SYN-BT011-1)	100 x 0,15 ml	5211501001
Genomic DNA Bt176 corn, 5% GMO, made from ERM BF411f (SYN-EV176-9)	100 x 0,15 ml	5211500701
Genomic DNA CBH351 corn (ACS-ZM004-3)	100 x 0,15 ml	5211501301
Genomic DNA GA21 corn, 5% GMO, made from ERM BF414f (MON-00021-9)	100 x 0,15 ml	5211501201
Genomic DNA Herculex™ I TC 1507 corn, 10% GMO, from ERM BF418d (DAS-01507-1)	100 x 0,15 ml	5211507101
Genomic DNA Herculex™ RW DAS-591227 corn, 10% GMO, made from ERM BF424b (DAS-59122-7)	100 x 0,15 ml	5211507201
Genomic DNA MIR162 corn (SYN-IR162-4)	100 x 0,15 ml	5211516301
Genomic DNA MIR604 corn DNA, 10% GMO, made from ERM BF-423d (SYN-IR604-5)	100 x 0,15 ml	5211506401
Genomic DNA MON810 corn, 5% GMO, made from ERM BF413f (MON-00810-6)	100 x 0,15 ml	5211500901
Genomic DNA MON863 corn, 10% GMO, made from ERM BF416d (MON-00863-5)	100 x 0,15 ml	5211502301
Genomic DNA MON87460 corn (MON-87460-4)	100 x 0,15 ml	5211516401
Genomic DNA MON88017 corn (MON-88017-3)	100 x 0,15 ml	5211512001
Genomic DNA MON89034 corn (MON-89034-3)	100 x 0,15 ml	5211512101
Genomic DNA NK603 corn, 5% GMO, made from ERM BF415f (MON-00603-6)	100 x 0,15 ml	5211508201
Genomic DNA T25 corn 3(ACS-ZM003-2)	100 x 0,15 ml	5211500801
Genomic DNA DAS-40278-9 (DAS-40278-9) corn 10% GMO, made from ERM BF433d	100 x 0,15 ml	5211521201
Genomic DNA LLCotton25 (ACS-GH001-3)	100 x 0,15 ml	5211512401
Genomic DNA MON1445 cotton (MON-01445-2)	100 x 0,15 ml	5211511301
Genomic DNA MON15985 cotton (MON-15985-7)	100 x 0,15 ml	5211512201
Genomic DNA MON531 cotton (MON-00531-6)	100 x 0,15 ml	5211512301
Genomic DNA MON88913-8 cotton (MON-88913-8)	100 x 0,15 ml	5211511401
Genomic DNA 281-24-236 x 3006-210-23 (Widestrike) cotton, 10% GMO, made from ERM BF422d	100 x 0,15 ml	5211512701
Plasmid DNA pGSE625 (FP967 flax; EURL method) (CDC-FL001-2)	100 x 0,15 ml	5211509901
Plasmid DNA pGSE644 (Sunup™ papaya) (e.g. for LMBG \$64 PCR and RT-PCR methods)	100 x 0,15 ml	5211515401
Genomic DNA Sunup papaya (event 55-1)	100 x 0,15 ml	5211514801
Plasmid DNA pGSE28 (Bt63 rice, for use with EURL method QL-CON-00-007)	100 x 0,15 ml	5211505001
Plasmid DNA pGSE219 (LL62 rice, ACS-OS002-5), for use with EURL method QT-EVE-OS-002	100 x 0,15 ml	5211508501
Plasmid DNA pGSE220 (LL601 rice, for use with EURL method QL-EVE-OS-001)	100 x 0,15 ml	5211505401
Genomic DNA MS8 rapeseed (ACS-BN005-8)	100 x 0,15 ml	5211507901
Genomic DNA Rf3 rapeseed (ACS-BN003-6)	100 x 0,15 ml	5211512601
Genomic DNA RT73 rapeseed (MON-00073-7)	100 x 0,15 ml	5211501701
Genomic DNA T45 rapeseed (ACS-BN008-2)	100 x 0,15 ml	5211512501
Genomic DNA DAS-68416-4 soy 10% GMO, made from ERM BF432d	100 x 0,15 ml	5211521001
Genomic DNA DAS-44406-6 soy 10% GMO, made from ERM BF436e	100 x 0,15 ml	5211521101
Genomic DNA DAS-81419 Soy	100 x 0,15 ml	5211524701
Genomic DNA A2704-12 soy (ACS-GM005-3)	100 x 0,15 ml	5211511801
Genomic DNA A5547-127 soy (ACS-GM006-4)	100 x 0,15 ml	5211512801



## Control DNA GMOs

Product	Quantity	Article No.
Genomic DNA CV127 soy (BPS-CV127-9)	100 x 0,15 ml	5211515201
Genomic DNA DP305423-1 soy (DP-305423-1) 10% GMO, made from CRM BF426d	100 x 0,15 ml	5211515101
Genomic DNA DP356043-5 soy (DP-356043-5) 10% GMO, made from CRM BF425d	100 x 0,15 ml	5211515301
Genomic DNA MON87701 soy (MON-87701-2)	100 x 0,15 ml	5211514501
Genomic DNA MON89788 soy (MON-89788-1)	100 x 0,15 ml	5211511901
Genomic DNA Roundup Ready™ soy 10% GMO, made from ERM BF410gk (GTS-40-3-2, MON-04032-6) 1	100 x 0,15 ml	5211500601
Genomic DNA H7-1 sugarbeet (KM-00071-4) 100% GMO, made from ERM BF419b	100 x 0,15 ml	5211507001
Genomic DNA A2704-12 soy (ACS-GM005-3)	10000 x 0,15 ml	5211521301
Genomic DNA A5547-127 soy (ACS-GM006-4)	10000 x 0,15 ml	5211521401
Genomic DNA CV127 soy (BPS-CV127-9)	10000 x 0,15 ml	5211521501
Genomic DNA MON87701 soy (MON-87701-2)	10000 x 0,15 ml	5211521601
Genomic DNA MON89788 soy (MON-89788-1)	10000 x 0,15 ml	5211521701
Genomic DNA Roundup Ready™ Soy 10% GMO, made from ERM BF410gk (GTS-40-3-2, MON-04032-6)	10000 x 0,15 ml	5211521801
Genomic DNA DP305423-1 soy (DP-305423-1), 10% GMO, made from CRM BF426d	10000 x 0,15 ml	5211522001
Genomic DNA DP356043-5 soy (DP-356043-5), 10% GMO, made from CRM BF425d	10000 x 0,15 ml	5211522101
Genomic DNA MON810 maize (MON-00810-6) 5% GMO, made from ERM BF413f	20 µL 10 x 20 µL	5211513902 5211513920
Genomic DNA T25 maize (ACS-ZM003-2)	20 µL 10 x 20 µL	5211514002 5211514020
Genomic DNA RT73 rapeseed (MON-00073-7)	20 µL 10 x 20 µL	5211513602 5211513620
Genomic DNA MS8 rapeseed (ACS-BN005-8)	20 µL 10 x 20 µL	5211513702 5211513720
Genomic DNA Rf3 rapeseed (ACS-BN003-6)	20 µL 10 x 20 µL	5211513802 5211513820
Genomic DNA LL62 rice (ACS-OS002-5)	20 µL 10 x 20 µL	5211514102 5211514120
Genomic DNA MON4032-6 soy (MON-04032-6) 10% GMO, made from ERM BF410gk	20 µL 10 x 20 µL	5211514202 5211514220

## Control DNA's Plant Species

Product	Quantity	Article No.
Genomic DNA Almond ( <i>Prunus dulcis</i> )	100 x 0,15 ml	5211516101
Genomic DNA Brazil Nut ( <i>Bertholletia excelsa</i> )	100 x 0,15 ml	5211516001
Genomic DNA Corn/Maize ( <i>Zea mays</i> )	100 x 0,15 ml	5211515601
Genomic DNA Cotton ( <i>Gossypium</i> )	100 x 0,15 ml	5211501801
Genomic DNA Lupine ( <i>Lupinus albus</i> )	100 x 0,15 ml	5211515901
Genomic DNA Rapeseed/Canola ( <i>Brassica napus</i> )	100 x 0,15 ml	5211515701
Genomic DNA Rice ( <i>Oryza sativa</i> )	100 x 0,15 ml	5211514601
Genomic DNA Sesame ( <i>Sesamum indicum</i> )	100 x 0,15 ml	5211515801
Genomic DNA Soy ( <i>Glycine max</i> )	100 x 0,15 ml	5211515501
Genomic DNA Alfalfa ( <i>Medicago sativa</i> )	100 x 0,15 ml	5211520403
Genomic DNA Squash ( <i>Cucurbita</i> )	100 x 0,15 ml	5211520303
Genomic DNA Papaya ( <i>Carica papaya</i> )	100 x 0,15 ml	5211520203
Genomic DNA Soy ( <i>Glycine max</i> )	100 x 0,15 ml	5211521901

## Verification and Accessory Kits for Real-Time PCR

Product	Product description	Article No.
Verification Kit for GMOScreen RT (35S/NOS/ FMV)	Verification kit for GMOScreen RT kits (35S/NOS and 35S/NOS/FMV (IPC)); LOD verification, DNAs, instruction and evaluation table included. One GMOScreen RT IPC 35S/NOS/FMV kit needed additionally.	5421299901
Eurofins Color Compensation Kit FAM, HEX	Eurofins Color Compensation Kit for kits with FAM, HEX labelling (i.e. for GMOScreen RT IPC FMV/IPC)	5427200200
Eurofins Color Compensation Kit FAM, R6G	Eurofins Color Compensation Kit for kits with FAM, R6G labelling (i.e. for GMOScreen RT IPC CsVMV)	5427200201
Eurofins Color Compensation Kit FAM, HEX, Cy5	Eurofins Color Compensation Kit for kits with FAM, HEX, Cy5 labelling	5427200300
Eurofins Color Compensation Kit FAM, JOE, Cy5	Eurofins Color Compensation Kit for kits with FAM, JOE, Cy5 labelling (i.e. for GMOScreen RT IPC bar/pat)	5427200301
Eurofins Color Compensation Kit FAM, Cy5, R6G	Eurofins Color Compensation Kit for kits with FAM, Cy5, R6G labelling (i.e. for GMOScreen RT IPC AgroBorder I/II or DNAnimal Screen Halal IPC)	5427200302
Eurofins Color Compensation Kit FAM, HEX, Cal610, Cy5	Eurofins Color Compensation Kit for kits with FAM, HEX, Cal610, Cy5 labelling (i.e. for GMOScreen RT IPC 35S/NOS/FMV)	5427200400
Eurofins Color Compensation Kit FAM, R6G, ROX, Cy5	Eurofins Color Compensation Kit for kits with FAM, R6G, ROX, Cy5 labelling (i.e. for GMOScreen RT IPC 35S/NOS/FMV)	5427200401







## ELISA Kits (GMO)



Product name	Product description	Quantity	Article No.
Cry1Ac/Ab ELISA kit	Corn/ cotton individual leaf, Seed	1, 10, 50 or 100	AID 007
Cry2A ELISA kit	Corn/cotton individual leaf, Seed	1, 10, 50 or 100	AID 008
CP4EPSPS (RR) ELISA kit	Cotton/Corn/Soybean individual leaf, seed	1, 10, 50 or 100	AID 011
Cry1Ac/Cry2A combined ELISA kit	Cotton individual seed, leaf	50 or 100	AID 017
PAT/bar ELISA kit	Cotton/Corn/Canola/Mustard individual leaf, seed	1, 10, 50 or 100	AID 018
Vip3A ELISA kit	Cotton individual leaf, seed	1, 10, 50 or 100	AID 023
PAT/pat ELISA kit	Cotton/Corn leaf, seed	1, 10, 50 or 100	AID 027
Cry1F ELISA kit	Corn/Cotton individual leaf, seed	1, 10, 50 or 100	AID 004
HPPD ELISA kit	Soybean/Cotton individual seed,	1 or 10	AID 021
eCry3.1Ab ELISA kit	Corn leaf, seed, bulk grain	10, 50 plates	AID 051
Modified Cry3A ELISA kit	Corn leaf, seed, bulk grain	10, 50 plates	AID 052
Cry3Bb ELISA kit	Corn leaf, seed, bulk grain	10, 50 plates	AID 053
Vip ELISA kit	Corn leaf, seed, bulk grain	10, 50 plates	AID 059

## Lateral Flow Devices (GMO)



Product name	Product description	Quantity	Article No.
Cry1Ac LFS kit	Individual Cotton leaf, seed	100 strips	AID 032
Cry1F LFS kit	Individual Corn/Cotton leaf, seed	100 strips	AID 033
Cry2A LFS kit	Individual Corn/Cotton leaf, seed	100 strips	AID 026
Vip3A LFS kit	Individual Corn/Cotton leaf, seed	100 strips	AID 031
Cry1Ab LFS kit	Individual Corn leaf, seed	100 strips	AID 041
CP4EPSPS (RR) LFS kit	Individual Corn/Soybean leaf, seed	100 strips	AID 025
HPPD LFS kit	Individual Soybean, Cotton leaf, seed	100 strips	AID 024
PAT/Pat LFS kit	Individual Corn leaf, seed	100 strips	AID 029
Cry1Ac/Cry2A	Individual Cotton seed only	100 strips	AID 037
Cry1Ac/Cry2A	Individual Cotton seed, leaf	100 strips	AID 038
Cry1Ab/CP4EPSPS (RR)	Individual Corn leaf , seed	100 strips	AID 036
Cry1Ac/Cry2A/CP4EPSPS(RR)	Individual Cotton seed	100 strips	AID 034
Cry1Ac/Cry2A/CP4EPSPS(RR)	Individual Cotton seed/leaf	100 strips	AID 035
CP4EPSPS (RR) LFS kit	Individual Cotton leaf, seed	100 strips	AID 039
PAT/bar LFS kit	Individual mustard or canola leaf/seed	100 strips	AID 049
Modified Cry3A LFS kit	Individual Corn leaf and seed	100 strips	AID 057
Cry3Bb LFS kit	Individual Corn leaf and seed	100 strips	AID 054

## Lateral Flow Devices (GMO - AP Testing)



Product name	Product description	Quantity	Article No.
CP4EPSPS (RR) LFS kit	Bulk soy bean grain (0.1%)	100 strips	AID 040
CP4EPSPS (RR) LFS kit	Bulk corn grain (0.1%)	100 strips	AID 042
CP4EPSPS (RR) LFS kit	Bulk cotton seeds (0.1%)	100 strips	AID 043
Cry1Ac LFS kit	Bulk cotton seeds (0.25%)	100 strips	AID 044
Cry1Ab LFS kit	Bulk corn grain (0.8%)	100 strips	AID 045
Cry2A LFS kit	Bulk cotton seeds (0.25%)	100 strips	AID 046
Cry2A LFS kit	Bulk corn grain (1%)	100 strips	AID 047
Vip3A LFS kit	Bulk corn grain (0.25%)	100 strips	AID 048
Cry1F LFS kit	Bulk corn grain (0.5 %)	100 strips	AID 050
eCry3A and Cry3Bb combined LFS kit	Corn bulk grain (0.5 %)	100 strips	AID 058
Cry3Bb LFS kit	Corn bulk grain (0.2%)	100 strips	AID 060

## Additional GMO ELISA Kits and Proteins



Product	Product Format	Quantity	Article No.
Bt Cr1Ab/Cry1Ac	ELISA Plate	96 tests	510001
Bt Cry1F	ELISA Plate	96 tests	510006
CP4 EPSPS	ELISA Plate	96 tests	510101
Cry1Ab	Protein	10 ug	300003
Cry1Ac	Protein	10 ug	250020
Cry1F	Protein	10 ug	250030
Cry2A	Protein	10 ug	250040
Cry3B	Protein	10 ug	250050
Cry9C	Protein	10 ug	250060

# DNA AND RNA EXTRACTION



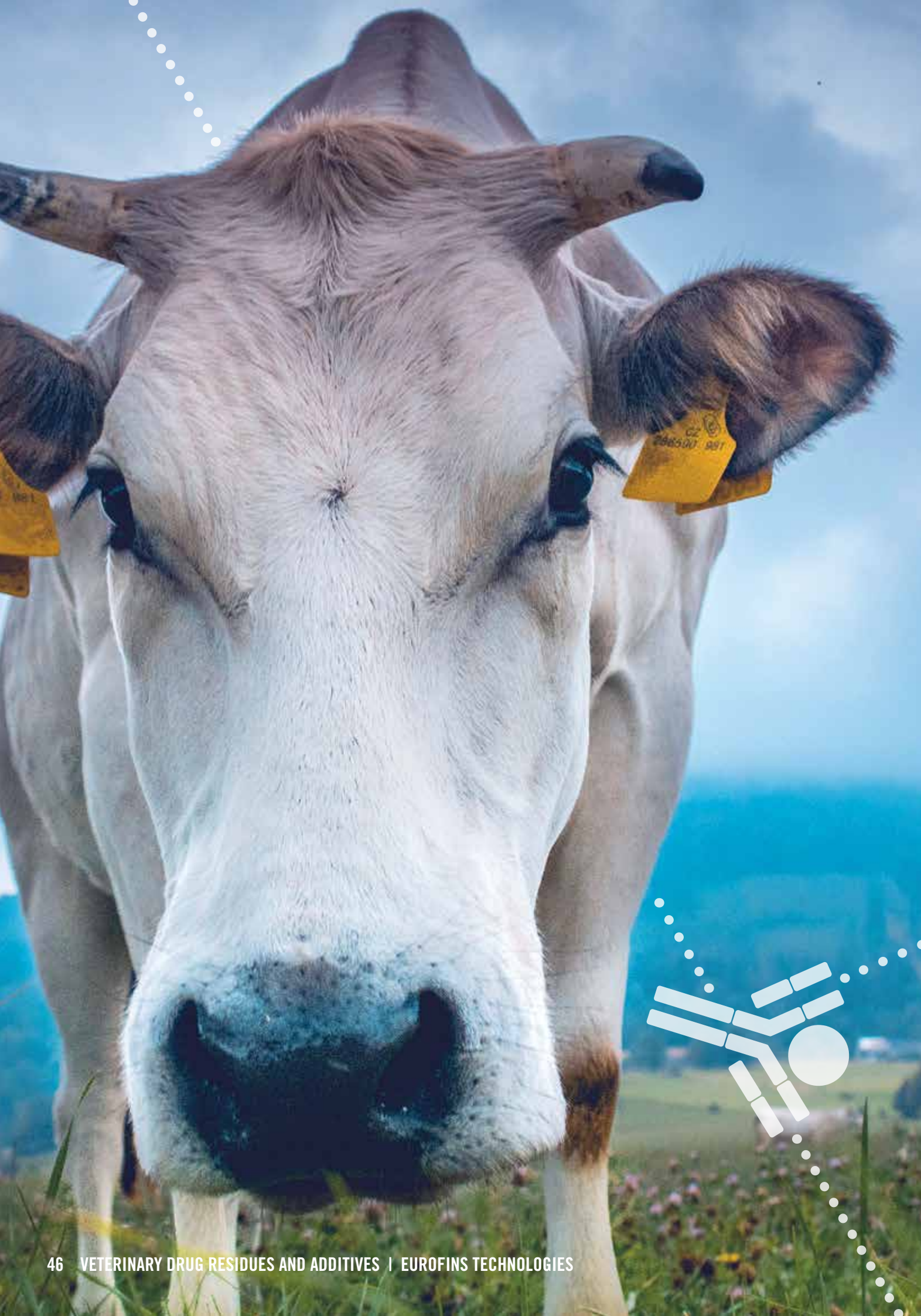
Food, feed and seed laboratories are often faced with a number of challenges during the extraction of DNA. The high variability of samples types as well as inhibitory substance and low DNA yield can have detrimental impacts on the subsequent analytical methods, such as PCR testing. High-quality DNA is the prerequisite for the success of these methods, therefore it is crucial to select the right DNA extraction method optimised for your sample type. Our kit portfolio offers DNA extraction methods for a wide range of sample types.

## DNA Extraction and Electrophoresis



Product	Product description	Quantity	Article No.
GENESpin	DNA extraction kit for 50 food or feed samples	50 samples	5224400605
		10 x 50 samples	5224400610
		30 x 50 samples	5224400630
		50 x 50 samples	5224400650
Additional lysis buffer for GENESpin	1000 ml buffer CF	1000 ml	5224701901
Additional GENESpin Binding Buffer	250 ml GENESpin Binding Buffer	250 ml	5224400704
DNA Cleaning Columns	100 DNA cleaning columns	100 columns	5224700310
		5 x 100 columns	5224700315
		10 x 100 columns	5224700311
DNAExtractor	DNA extraction kit for 50 seed, grain, food or feed samples (solvents not included)	50 samples	5224700610
Additional lysis buffer for DNAExtractor 3		500 ml	5224700205
DNAExtractor Fat for lecithin, oil and fat	DNA extraction kit for 50 oil, fat or lecithin samples, solvents not incl.	50 samples	5224700710
DNAExtractor Gelatin	DNA extraction kit for 50 gelatin samples. (solvents not included)	50 samples	5224701001
Buffer EFG for emulsifier, fat and gelatin		2 x 50 ml	5224700110
DNAExtractor Honey (Qiagen/Retsch Tissue Lyser® needed)	DNA extraction kit for 50 honey/pollen samples	50 samples	5224700910
DNA Length Standard pUC18 HAIII size marker 26 – 501 bp	Clean-up commodity extracts of food and feed samples containing aflatoxins, ochratoxins and zearalenon	500 µL, 0.05 µg/µL	5217720401
RNase		5 mg/ml, 0.5 ml	5216700201
RNase		50 mg/ml, 1 ml	5216700205
Proteinase K, solution		20 mg/ml, 750 µL	5226700101
Proteinase K, lyophilized		100 mg	5214700101





# VETERINARY DRUG RESIDUES AND ADDITIVES

Veterinary drugs are usually administered within animal husbandry to cure and to prevent diseases, to increase weight gain and to tranquilize animals during transportation. These drugs consist of a complex group of hundreds of substances belonging to different chemical classes and therapeutic areas i.e., antibiotics, antiparasitics, nonsteroidal anti-inflammatory drugs, growth promoters such as steroid hormones and betaagonists, and many others.

The widespread use of veterinary drugs in livestock is of great concern as their presence in edible products could induce severe consequences on human health: i.e., hepato- and nefro-toxicity, side effects, allergic reactions, sterility, cancer, and last but not the least, drug contaminated food can favor anti-microbial resistance.

## Eurofins Technologies ELISA Kits to Detect Veterinary Drug Residues and Feed Additives

Eurofins Technologies provides broad support for the needs of the meat, dairy, aquaculture, animal husbandry, veterinary, and other industries. Products include ELISA for quantitative analysis and lateral flow tests for rapid analysis of substances in matrices such as meat, egg, milk, honey, fish, crustaceans, molluscs, and animal feed.

Analytes include:

### Antimicrobials

- Sulfonamides (1, 2)
- Tetracyclines (1, 2)
- Quinolones (1, 2)
- Aminoglycosides (gentamicin, neomycin, streptomycin)
- Tylosin
- Chloramphenicol
- Nitrofurans metabolites (AOZ, AMOZ, SEM, AHD)
- Nitroimidazoles (2)
- Penicillin
- Ivermectin
- Salinomycin
- Monensin

### Beta-agonists

- Clenbuterol
- Ractopamine
- Beta-agonists (2)

### Steroids and RALs

- Zeranol
- Trenbolone
- Nandrolone (19-NOR)
- Boldenone
- Diethylstilbestrol
- 17-beta-estradiol
- Testosterone

### Others

- Corticosteroids (1, 2)
- Acrylamide
- Melamine
- Fluoroquinolones
- Ivermectin
- Sulfamethoxazole

(1) *B ZERO*® format available: virtual master curve calibration

(2) Broad range kit: this kit can recognize a wide number of drugs belonging to the same substance

## Key Benefits of the VDR ELISA Kits

- *B ZERO*®: ELISA test kits with virtual calibration curve - the most cost effective offer available on the market
- *I'Screen*: ELISA test kits for the detection of low levels of drug residues as well as the presence of a number of structure-related contaminants

## I'Screen Quantitative ELISA Test Kits



Product	Product description	No. of tests / Quantity	Article No.
I'Screen SULFA QL	Qualitative detection of Sulfonamides	96	SM380
I'Screen SULFA	Quantitative detection of Sulfonamides	96	SM390
I'Screen Strepto	Qualitative detection of Streptomycin	96	AB650
Milk Standard for I'Screen Strepto	1.5ml of Milk Standard	1.5 ml	AB654
I'Screen Gentamicin	Quantitative detection of Gentamicin	96	AB670
I'Screen Neomycin	Quantitative detection of Neomycin	96	AB672
I'Screen Tylosin	Quantitative detection of Tylosin	96	AB620
I'Screen CAP total	Detection of Total Chloramphenicol	96	AB600
I'Screen CAP	Quantitative detection of Chloramphenicol	96	AB630
I'Screen CAP v2	Quantitative detection of Chloramphenicol v2	96	AB660
I'Screen AOZ v2	Quantitative detection of Furazolidone Metabolite	96	AB643
I'Screen SEM	Quantitative detection of nitrofurazone metabolite (SEM)	96	AB644
I'Screen AHD	Qualitative detection of nitrofurantoin metabolite (SEM)	96	AB647
I'Screen AMOZ v2	Detection of Furaltadone Metabolite	96	AB648
I'Screen QUINO	Quantitative detection of Quinolones	96	AB686
I'Screen DES	Quantitative detection of Diethylstilbestrol	96	FA624
I'Screen 19-Nortestosterone	Quantitative detection of 19-Nortestosterone	96	FA623
I'Screen Trenbolone	Quantitative detection of Trenbolone	96	FA622
I'Screen Zeranol	Quantitative detection of Zeranol	96	FA621
Kit for Boldenone	Quantitative detection of Cortico	96	FA650
I'Screen Cortico	Quantitative detection of Cortico	96	FA679
β-agonists (clenbuterol) ELISA kit	Quantitative detection of Clenbuterol	96	AA101
I'Screen Beta-agonists v2	Quantitative detection of Beta-agonists	96	AA107
Kit for Ractopamine	Quantitative detection of Ractopamine	96	AA300
Nitroimidazoles ELISA kit	Quantitative detection of nitroimidazoles	96	AB005

## B ZERO® Quantitative ELISA Test Kit



Product	Product description	No. of tests	Article No.
B ZERO® SULFA	Quantitative detection of Sulfonamides	48	SM392
B ZERO® STREPTO	Quantitative detection of Streptomycin	48	AB658
B ZERO® CORTICO	Quantitative detection of Corticosteroids	48	FA674
B ZERO® QUINO	Quantitative detection of Quinolones	48	AB687
B ZERO® TETRA / Epimers	Quantitative detection of Tetracyclines and their epimers	48	AB752

## Other Kits to Detect Veterinary Drug Residues and Additives

Product	Product Format	Quantity	Article No.
Chloramphenicol, ELISA, 96-test	Plate	96 tests	5113B
Enrofloxacin, ELISA, 96-test	Plate	96 tests	522511
Fluoroquinolones, ELISA, 96-test	Plate	96 tests	52250BA
Gentamicin, ELISA, 96-test	Plate	96 tests	5111GEN1A
Histamine, ELISA, 96-test	Plate	96 tests	515168
Ivermectin/Abamectin, ELISA, 96-test	Plate	96 tests	5142B
Maduramicin, ELISA, 96-test	Plate	96 tests	515790
Melamine, ELISA, 96-test	Plate	96 tests	50005B
Melamine, Extraction Suspension, 500 mL	Extraction Diluent	500 mL	50005E
Melamine, Diluent, 250 mL	Sample Diluent	250 mL	50005D
Monensin, ELISA, 96-test	Plate	96 tests	515785
Progesterone, Bovine Pregnancy (Milk/Serum/Plasma), ELISA, 96-test	Plate	96 tests	5081M
Salinomycin/Narasin, ELISA, 96-test	Plate	96 tests	515795
Sulfamethoxazole (SMX), ELISA, 96-test	Plate	96 tests	522003
Tetracyclines/Epimers, ELISA, 96-test	Plate	96 tests	52254BA

## Acrylamide Test Kits



Product	Product Format	Quantity	Article No.
Acrylamide-ES, ELISA, 96-test	Plate	96 tests	515680
Acrylamide-ES, Sample Prep, bags/vessels/caps/plungers/filters, 50-test	Sample Prep	50 tests	706057
Acrylamide-ES, Tube 1, 3 mL column, 500 mg, bx/50 (Centrifuge Method)	SPE Column	50 tests	395032
Acrylamide-ES, Tube 2, 3 mL column, 200 mg, bx/50 (Centrifuge Method)	SPE Column	50 tests	706013
Acrylamide-ES, Tube 1, 2 mL column, 400 mg, bx/100 (Vacuum Method)	SPE Column	100 tests	395009
Acrylamide-ES, Tube 2, 2 mL column, 200 mg, bx/100 (Vacuum Method)	SPE Column	100 tests	395010
Acrylamide-ES, Collection Plate, 96-well, 2.5 mL (Vacuum Method)	Collection Plate	96 tests	395007





# VETERINARY DIAGNOSTICS



In industrial livestock production, operating conditions are optimized to achieve the highest production output while minimizing costs. Given the high density of livestock and the production pressure, the emergence of infectious diseases is a major risk, and therefore prevention and control measures are essential.

Our diagnostic kits support the animal health management with:

- Detecting and monitoring epidemiological risks,
- Supporting vaccines & treatment development,
- Controlling the quality of produced meat,
- Improving animal welfare.

## Eurofins Technologies Ingenasa Veterinary Diagnostic Kits

Eurofins Technologies through its subsidiary Ingenasa provides a wide range of indirect, blocking or double antibody ELISA assays to detect viral and bacterial pathologies in both farm and companion animals. The broad catalogue of these serological assays include a total number of 80 infectious diseases that affect 9 different animal species.

The high specificity and sensibility of the ELISA kits prove to be ideal to support the animal health management and the eradication of disease.

- **Veterinary diagnostic kits for farming animals:** ELISA kits for the detection of specific antibodies in pigs, cattle, horses, sheep and goats.
- **Veterinary diagnostic kits for companion animals:** ELISA kits for the detection of specific antibodies in cats, dogs or rabbits.
- **Multispecies kits:** ELISA kits for the detection of antigens, specific antibodies or viruses in multiple species.

A line of diagnostic tools based on PCR techniques, both for conventional and real-time PCR platforms, is also available.

## Key Benefits

- Easy and reliable tests, based on high quality reagents (recombinant antigens and monoclonal antibodies)
- Wide range of infectious diseases and animal species covered
- Different presentations available for the best adaptation to the requirements of each client

# SEROLOGICAL ASSAYS

## MULTISPECIES specialities



Product	Product description	No. of tests		Article No.
<b>BRUCELLOSIS</b>				
INgezim Brucella Compac	Blocking ELISA for the detection of specific antibodies to Brucella spp. in ruminants and porcine serum samples.	2 plates kit 5 plates kit	192 480	10.BRU.K.3/2 10.BRU.K.3/5
<b>CRYPTOSPORIDIOSIS</b>				
INgezim Crypto CROM	LFA for the detection of Cryptosporidium antigen in biological samples (faeces from all species).	12 individual devices 30 individual devices	12 30	10.CRY.K.42/12 10.CRY.K.42/30
<b>GIARDIOSIS</b>				
INgezim Giardia CROM	LFA for the detection of Giardia antigen in biological samples (faeces from all species).	12 individual devices 30 individual devices	12 30	10.GIA.K.42/12 10.GIA.K.42/30
<b>INFLUENZA A</b>				
INgezim Influenza A	Blocking ELISA for the detection of specific antibodies to Influenza type A virus in serum samples from different species.	2 plates kit 5 plates kit	192 480	10.FLU.K.3/2 10.FLU.K.3/5
<b>ROTAVIROSIS</b>				
INgezim Rotavirus DAS	Double antibody ELISA for the detection of Rotavirus (Type A) antigen in biological samples (faeces from all species).	1 plate kit	96	10.RT.K.2
INgezim Rota CROM	LFA for the detection of Rotavirus (Type A) antigen in biological samples (faeces from all species).	12 individual devices 30 individual devices	12 30	10.RT.K.42/12 10.RT.K.42/30
<b>TUBERCULOSIS</b>				
INgezim Tuberculosis DR	Double recognition ELISA for specific antibodies detection to Mycobacterium bovis in serum samples from wild and domestic animals, except cattle.	2 plates kit 5 plates kit	192 480	10.TB.K.0/2 10.TB.K.0/5
<b>WEST NILE FEVER</b>				
INgezim West Nile Compac	Blocking ELISA for the detection of specific antibodies to WNV in birds and equine serum samples.	2 plates kit 5 plates kit	192 480	10.WNV.K.3/2 10.WNV.K.3/5

## PORCINE specialities



Product	Product description	No. of tests		Article No.
<b>AUJESZKY DISEASE (ADV or PRV)</b>				
INgezim ADV TOTAL	Indirect ELISA for the detection of specific total antibodies to ADV (vaccinated and infected animals) in porcine serum samples.	2 plates kit 5 plates kit	192 480	11.ADV.K.1/2 11.ADV.K.1/5
INgezim ADV gE Plus	Blocking ELISA for the detection of specific antibodies to ADV gE glycoprotein in porcine serum samples.	2 plates kit 5 plates kit	192 480	11.GEP.K.3/2 11.GEP.K.3/5
INgezim ADV gB	Blocking ELISA for the detection of specific antibodies to ADV gB glycoprotein in porcine serum samples.	2 plates kit 5 plates kit	192 480	11.GB.K.3/2 11.GB.K.3/5
<b>CLASSICAL SWINE FEVER (CSFV)</b>				
INgezim CSF Compac	Blocking ELISA for the detection of specific antibodies to Clasiical Swine Fever Virus in porcine serum samples.	2 plates kit 5 plates kit	192 480	11.CSF.K.3/2 11.CSF.K.3/5
<b>AFRICAN SWINE FEVER (ASFV)</b>				
INgezim PPA DAS	Double antibody ELISA for the detection of ASFV antigen in biological samples.	1 plate kit	96	11.PPA.K.2

Product	Product description	No. of tests		Article No.
INgezim ASF CROM Ag	LFA for the detection of ASFV antigen in porcine blood samples.	30 individual devices 100 individual devices	30 100	11.ASF.K.42/30 11.ASF.K.42/100
INgezim PPA CROM Ab	LFA for the detection of specific antibodies to ASFV in porcine serum and whole blood samples.	30 individual devices 100 individual devices	30 100	11.PPA.K.41/30 11.PPA.K.41/100
INgezim PPA Compac	Blocking ELISA for the detection of specific antibodies to ASFV in porcine serum samples.	2 plates kit 5 plates kit	192 480	11.PPA.K.3/2 11.PPA.K.3/5
INgezim ASFV/CSFV CROM Ab	Specific antibodies against to classical swine fever and African swine fever virus	25 individual devices	25	R.11.SFV.K41
<b>PORCINE BRUCELLOSIS</b>				
INgezim Brucella Porcina	Indirect ELISA for the detection of specific antibodies to Brucella suis in porcine serum samples.	2 plates kit 5 plates kit	192 480	11.BP.K.1/2 11.BP.K.1/5
<b>ERYSIPELAS</b>				
INgezim Mal Rojo	Indirect ELISA for the detection of specific antibodies to E. Rushiopathiae in porcine serum samples.	2 plates kit 5 plates kit	192 480	11.MR.K.1/2 11.MR.K.1/5
<b>GLÄSSER DISEASE</b>				
INgezim Haemophilus	Indirect ELISA for the detection of specific antibodies to Haemophilus parasuis in porcine serum samples.	2+2 plates kit	192	11.HPS.K.1/4
<b>ENZOOTIC PNEUMONIA</b>				
INgezim M. hyo Compac	Blocking ELISA for the detection of specific antibodies to Mycoplasma hyopneumoniae in porcine serum samples.	2 plates kit 5 plates kit	192 480	11.MHY.K.3/2 11.MHY.K.3/5
<b>PORCINE INFLUENZA</b>				
INgezim Influenza Porcina	Indirect ELISA for the detection of specific antibodies to SIV in porcine serum samples.	2 plates kit 5 plates kit	192 480	11.FLU.K.1/2 11.FLU.K.1/5
<b>PORCINE CIRCOVIRUS</b>				
INgezim PCV DAS	Double antibody ELISA for the detection of PCV2 antigen in Virus culture samples.	1 plate kit	96	11.CIR.K.2
INgezim Circovirus IgM/IgG	Capture ELISA for the detection of specific IgMs and IgGs to PCV2 in porcine serum samples.	2+2 plates kit	192	11.PCV.K.2
INgezim Circovirus IgG	Indirect ELISA for the detection of specific antibodies to PCV2 in porcine serum samples.	2 plates kit 5 plates kit	192 480	11.PCV.K.1/2 11.PCV.K.1/5
<b>PORCINE PARVOVIRUS (PPV)</b>				
INgezim PPV	Indirect ELISA for the detection of specific antibodies to PPV in porcine serum samples.	2 plates kit 5 plates kit	192 480	11.PPV.K.1/2 11.PPV.K.1/5
INgezim PPV Compac	Blocking ELISA for the detection of specific antibodies to PPV in porcine serum samples.	2 plates kit 5 plates kit	192 480	11.PPV.K.3/2 11.PPV.K.3/5
INgezim PPV DAS	Double antibody ELISA for the detection of PPV antigen in biological samples including virus cultures.	1 plate kit	96	11.PPV.K.2
<b>PORCINE CORONAVIROSIS (PRCV) AND TRANSMISSIBLE GASTROENTERITIS (TGEV)</b>				
INgezim Corona Diferencial 2.0	Blocking ELISA for the detection and differentiation of antibodies to TGEV and PRCV in porcine serum samples.	2 plates kit 5 plates kit	192 480	11.DIF.K.3/2 11.DIF.K.3/5
INgezim TGEV 2.0	Blocking ELISA for the detection of specific antibodies to TGEV in porcine serum samples.	2 plates kit 5 plates kit	192 480	11.TGE.K.3/2 11.TGE.K.3/5
INgezim Coronavirus Porcino 2.0	Blocking ELISA for the detection of specific antibodies to PRCV/TGEV in porcine serum samples.	2 plates kit 5 plates kit	192 480	11.PRC.K.3/2 11.PRC.K.3/5
INgezim PEDV	Indirect ELISA for detection of specific antibodies to PEDV in porcine serum samples.	2 plates kit 5 plates kit	192 480	11.PED.K.1/2 11.PED.K.1/5
<b>PORCINE REPRODUCTIVE AND RESPIRATORY SYNDROME (PRRSV)</b>				
INgezim PRRS DR	Double recognition ELISA for the detection of specific antibodies to PRRSV in porcine serum samples.	2 plates kit 5 plates kit	192 480	11.PRS.K.0/2 11.PRS.K.0/5
INgezim PRRS Universal	Indirect ELISA for the detection of specific antibodies to PRRSV (EU and US isolates) in porcine serum samples.	2 plates kit 5 plates kit	192 480	11.PRU.K.1/2 11.PRU.K.1/5
INgezim PRRS 2.0	Indirect ELISA for the detection of specific antibodies to PRRSV (EU and US strains) in porcine serum samples.	2 plates kit 5 plates kit	192 480	11.PR2.K.1/2 11.PR2.K.1/5
<b>PORCINE ROTAUIROSIS</b>				
INgezim Rotavirus Porcino	Indirect ELISA for the detection of specific antibodies to Rotavirus (Type A) in porcine serum samples.	2 plates kit 5 plates kit	192 480	11.RTP.K.1/2
<b>PORCINE TUBERCULOSIS</b>				
INgezim TB porcine	Indirect ELISA for the detection of specific antibodies to Mycobacterium bovis in wild boar and pig serum.	2 plates kit 5 plates kit	192 480	11.TBP.K.1/2 11.TBP.K.1/5



## RUMINANTS specialities



Product	Product description	No. of tests	Article No.
<b>BOVINE BESNOITIOSIS</b>			
INgezim Besnoitia	Indirect ELISA for the detection of specific antibodies to Besnoitia besnoiti in bovine serum samples.	2 plates	192
		5 plates	480
<b>BOVINE LEUKOSIS (BLV)</b>			
INgezim BLV Compac 2.0	Blocking ELISA for the detection of specific antibodies to BLV in bovine serum samples and milk samples.	2 plates kit	192
		5 plates kit	480
		10 plates kit	960
INgezim BLV Confirmación	Indirect ELISA for the confirmation of specific antibodies to BLV in bovine serum samples.	5+5 plates kit	192 480
<b>BOVINE RESPIRATORY SYNDROME (BRSV)</b>			
INgezim BRSV Compac	Blocking ELISA for the detection of specific antibodies to BRSV in bovine serum samples.	2 plates kit 5 plates kit	192 480
<b>BRUCELOSIS</b>			
INgezim Brucella Bovina Milk	Indirect ELISA for the detection of specific antibodies to Brucella in bovine milk samples (individual or tank samples)	6 plates kit	576
INgezim Brucella Bovina 2.0	Indirect ELISA for the detection of specific antibodies to Brucella in bovine serum samples (individual or pooled samples).	2 plates kit	192
		5 plates kit	480
		10 plates kit	960
INgezim Brucella ovis	Indirect ELISA for the detection of specific antibodies to Brucella ovis in small ruminants serum samples.	2 plates kit 5 plates kit	192 480
INgezim Brucella Small Ruminants	Indirect ELISA for the detection of specific antibodies to Brucella in ruminants serum samples.	2 plates kit 5 plates kit	192 480
INgezim AGID	Agar Gel immuno-diffusion (AGID) assay for the detection of specific antibodies (infection Ab and no vaccination Ab) present in ruminant serum samples infected with Brucella abortus and melitensis.	6 Agar plates with 14 wells per plate	84
<b>BLUE TONGUE (BTV)</b>			
INgezim BTV DR	Double recognition ELISA for the detection of specific antibodies to BTV in ruminants serum samples.	2 plates kit 5 plates kit	192 480
INgezim BTV DAS	Double antibody ELISA for the detection of BTV antigen in BTV culture samples (to evaluate the performance of the culturing).	1 plate kit	96
INgezim BTV CROM	Indirect LFA for the detection of specific antibodies to BTV in ruminants serum samples.	30 individual devices	30
INgezim BTV Compac 2.0	Blocking ELISA for the detection of specific antibodies to BTV in bovine serum samples (individual samples).	2 plates kit 5 plates kit	192 480
<b>MAEDI VISNA - CAPRINE ARTHRITIS ENCEPHALITIS</b>			
INgezim Maedi Screening	Indirect ELISA for the detection of specific antibodies to small ruminants Lentivirus. in small ruminants serum samples.	2 plates kit	192
		5 plates kit	480
INgezim Maedi Confirmación	Indirect ELISA for the detection of specific antibodies to small ruminants Lentivirus in small ruminants serum samples.	2+2 plates kit	192
<b>BOVINE VIRAL DIARRHEA (BVDV) AND BORDER DISEASE VIRUS (BDV)</b>			
INgezim BVD DAS	Double antibody ELISA for the detection of BVDV/BDV antigen in ruminant serum blood and ear notch samples	1 plate kit	96
		5 plate kit	480
INgezim PESTIVIRUS Compac	Blocking ELISA for the detection of specific antibodies to BVDV and BDV in ruminants serum samples.	2 plates kit 5 plates kit	192 480

Product	Product description	No. of tests	Article No.
<b>INFECTIOUS BOVINE RHINOTRACHEITIS (IBRV)</b>			
INgezim IBR gE Compac	Blocking ELISA for the detection of specific antibodies to gE protein from Infectious Bovine Rhinotracheitis Virus (IBRV) in bovine serum samples.	2 plates kit	192
		5 plates kit	480
INgezim IBR Compac	Blocking ELISA for the detection of specific antibodies to IBRV gB glycoprotein (total) in bovine serum samples.	2 plates kit	192
		5 plates kit	480
INgezim IBR	Indirect ELISA for the detection of specific antibodies to IBRV (total) in bovine serum, plasma and milk samples.	2 plates kit 5 plates kit	192 480
<b>BOVINE ROTAVIROSIOS</b>			
INgezim Rotavirus Bovino	Blocking ELISA for the detection of specific antibodies to RTB (Type A) in ruminants serum samples.	2 plates kit	192
<b>RIFT VALLEY FEVER (RVFV)</b>			
INgezim FVR Compac	Blocking ELISA for the detection of specific antibodies to RVFV in ruminants serum samples.	2 plates kit	192
		5 plates kit	480
		10 plates kit	960
INgezim FVR IgM	Capture enzymatic immunoassay for the detection of specific antibodies (IgM) to RVFV in ruminants serum samples.	2 plates kit 5 plates kit	192 480
<b>BOVINE NEOSPOROSIS</b>			
INgezim Neospora 2.0	Indirect ELISA for the detection of specific antibodies to Neospora caninum in bovine serum samples.	2 plates kit 5 plates kit	192 480
<b>SCHMALLEMBERG DISEASE (SBV)</b>			
INgezim Schmallenberg Compac	Blocking ELISA for the detection of specific antibodies to Schmallenberg virus in ruminants serum samples.	2 plates kit 5 plates kit	192 480
<b>PESTE DES PETITS RUMINANTS (PPRV)</b>			
INgezim PPR Compac	Blocking ELISA for the detection of specific antibodies to Peste des Petits Ruminants Virus in goats and sheep serum samples.	2 plates kit	192
		5 plates kit	480
		10 plates kit	960

## RABBIT specialities



Product	Product description	No. of tests	Article No.
<b>MIXOMATOSIS</b>			
INgezim Mixomatosis	Indirect ELISA for the detection of specific antibodies to Mixomatosis virus in rabbit serum samples.	2 plates kit	192
<b>RABBIT HAEMORRHAGIC DISEASE (RHDV)</b>			
INgezim RHDV	Indirect ELISA for the detection of specific antibodies to RHDV in rabbit serum samples.	2 plates kit	192
INgezim RHDV DAS	Double antibody ELISA for the detection of RHDV antigen in rabbit liver and other biological samples.	1 plate kit	96

## CANINE specialities



Product	Product description	No. of tests		Article No.
<b>CANINE CORONAVIRUS DISEASE (CCV)</b>				
INgezim Corona Canino	Indirect ELISA for the detection of specific antibodies to CCV in canine serum samples.	1 plate kit	96	15.CCV.K.1
<b>CANINE DISTEMPER (CDV)</b>				
INgezim Moquillo IgG	Indirect ELISA for the detection of specific antibodies to CDV (IgGs) in canine serum samples.	1 plate kit	96	15.CDG.K.1
INgezim Moquillo IgM	Capture antibody ELISA for the detection of specific antibodies to CDV (IgMs) in canine serum samples.	1 plate kit	96	15.CDM.K.2
<b>CANINE PARVOVIRUS DISEASE (CPV)</b>				
INgezim Parvovirus IgM	Capture antibody ELISA for the detection of specific antibodies to CPV (IgMs) in canine serum samples.	1 plate kit	96	15.CPM.K.2
INgezim CPV DAS	Double antibody ELISA for the detection of CPV antigens in biological samples (dog's faeces).	1 plate kit	96	15.CPV.K.2
INgezim Parvo Canino	Indirect ELISA for the detection of specific antibodies to CPV in canine serum samples.	1 plate kit	96	15.CPV.K.1
INgezim Parvo CROM	LFA for the detection of CPV antigen in canine serum samples.	12 individual devices 50 individual devices	12 50	15.CP2.K.42/12 15.CP2.K.42/50
<b>CANINE EHRLICHIOSIS</b>				
INgezim Ehrlichia	Indirect ELISA for the detection of specific antibodies to Ehrlichia canis in canine serum samples.	1 plate kit 10 plates kit	96 960	15.EHR.K.1 15.EHR.K.1/10
INgezim Ehrlichia Vet	Indirect ELISA for the detection of specific antibodies to Ehrlichia canis in canine serum samples.	32 wells kit	32	15.EHR.K.8/32
<b>CANINE LEISHMANIOSIS</b>				
INgezim Leishmania	Indirect ELISA for the detection of specific antibodies to Leishmania spp infantum in canine serum samples.	1 plate kit 10 plates kit	96 960	15.LSH.K.1 15.LSH.K.1/10
INgezim Leishma CROM	LFA for detection of antibodies to LSH in canine serum samples.	12 individual devices 50 individual devices	12 50	15.LSH.K.41/12 15.LSH.K.41/50
INgezim Leishmania Vet	Indirect ELISA for the detection of specific antibodies to Leishmania infantum in canine serum samples.	32 wells kit	32	15.LSH.K.8/32
<b>RABBIES</b>				
E.I.A. Rabia	Double antibody enzymeimmunoassay for the quantification of rababies virus glycoprotein in infected cell culture samples.	2 plates kit	96 960	40.RAB.K.2

## FELINE specialities



Product	Product description	No. of tests		Article No.
<b>FELINE CORONAVIRUS (FCV)</b>				
INgezim Corona Felino	Indirect ELISA for the detection of specific antibodies to FCV in feline serum samples.	1 plate kit	96	16.FCV.K.1
INgezim FCoV LFA	LFA for detection of specific antibodies to FCV in serum and blood samples.	12 individual devices	12	16.FCV.K.41/12
<b>FELINE IMMUNODEFICIENCY (FIV)</b>				
INgezim FIV	Indirect ELISA for the detection of specific antibodies to FIV in feline serum samples.	1 plate kit	96	16.FIV.K.1
INgezim FIV Vet	Indirect ELISA for the detection of specific antibodies to FIV in feline serum samples.	32 wells kit	32	16.FIV.K.8/32
INgezim FIV LFA	LFA for the detection of specific antibodies to FIV in feline serum and blood samples.	12 individual devices 30 individual devices	12 30	16.FI2.K.41/12 16.FI2.K.41/30
<b>FELINE LEUKAEMIA (FELV)</b>				
INgezim FeLV	Indirect ELISA for the detection of specific antibodies to FeLV gp70 in feline serum samples.	1 plate kit	96	16.FLV.K.1
INgezim FeLV CROM	LFA for detection of FeLV (p27) antigen in feline serum samples.	12 individual devices 30 individual devices	12 30	16.FLV.K.42/12 16.FLV.K.42/30
INgezim FeLV DAS	Double antibody ELISA for the detection of FeLV (p27) antigen in feline serum samples.	1 plate kit	96	16.FLV.K.2
INgezim FeLV Vet	Double antibody ELISA for the detection of FeLV (p27) antigen in feline serum samples.	32 wells kit	32	16.FLV.K.9/32

## EQUINE specialities



Product	Product description	No. of tests		Article No.
<b>AFRICAN HORSE SICKNESS (AHSV)</b>				
INgezim AHSV Compac Plus	Blocking ELISA for the detection of specific antibodies to AHSV in equine serum samples.	2 plates kit 5 plates kit	192 480	14.AHS.K.3/2 14.AHS.K.3/5
INgezim PEA DAS	Double antibody ELISA for the detection of specific AHSV antigen in equine biological samples (speren and tissues).	1 plate kit	96	14.PEA.K.2
INgezim AHSV CROM Anticuerpo	LFA for the detection of specific antibodies to AHSV in equine serum samples.	30 individual devices	30	14.AHS.K.41/30
<b>EQUINE INFECTIOUS ANEMIA (EIAV)</b>				
INgezim Anemia DR	Double recognition ELISA for the detection of specific antibodies to EIAV in equine serum samples.	2 plates kit	192	14.AIE.K.0/2
INgezim Anemia CROM	LFA for the detection of specific antibodies to EIAV in equine serum samples.	30 individual devices	30	14.AIE.K.41/30
<b>EQUINE ARTERITIS (EAV)</b>				
INgezim Arteritis 2.0	Indirect ELISA for the detection of specific antibodies to EAV in equine serum samples.	2+2 plates kit	192	14.EA2.K.1/4
<b>EQUINE RHINOPNEUMONITIS</b>				
INgezim Rinoneumonitis	ELISA for the detection of specific antibodies to Equine herpesvirus (EHV) subtypes 1 & 4 in equine serum samples	2 plates kit 5 plates kit	192 480	14.HVE.K.1/2 14.HVE.K.1/5
<b>WEST NILE FEVER (WNV)</b>				
INgezim West Nile IgM	Capture antibody ELISA for the detection of specific IgMs to WNV in equine serum samples.	1+1 plates kit	96	14.WNV.K.2







# MOLECULAR BIOLOGY ASSAYS

## PCR kits for MULTISPECIES infectious agents



Product name	Method	No. of tests	Article No.
<b>BRUCELLA</b>			
INgene q Brucella Typing	Real Time PCR (TaqMan technology)	100	10.BRM.K.5TC/Q
INgene q Brucella Typing ROX	Real Time PCR (TaqMan technology)	100	10.BRM.K.5TX/Q
INgene BRUCE-LADDER V	Conventional PCR	50	10.BRU.K.5/50
INgene q Brucella	Real Time PCR (TaqMan technology)	100	10.BRU.K.5TX/Q
<b>MYCOBACTERIUM PRATUBERCULOSIS</b>			
INgene q ParaTB	Real Time PCR (TaqMan technology)	100	10.MAP.K.5TX/Q
<b>MYCOPLASMA SPP</b>			
INgene Mycoplasma	Conventional PCR	50	10.MYC.K5/50
<b>PESTIVIRUS</b>			
INgene Pestivirus	Conventional PCR	50	10.PES.K5/50
INgene q Pestivirus SYBR detection	Real Time PCR (SYBR technology)	100	10.PES.K.5SX/Q

## PCR kits for PORCINE infectious agents



Product name	Method	No. of tests	Article No.
<b>AUJESZKY DISEASE VIRUS (ADV)</b>			
INgene Aujeszky	Conventional PCR	50	11.ADV.K.5/50
<b>AFRICAN SWINE FEVER (ASFV)</b>			
INgene q PPA	Real Time PCR (TaqMan technology)	100	11.PPA.K.5TX/Q
<b>BRUCELLA</b>			
INgene BRUCE-LADDER SUIS	Conventional PCR	50	11.BSu.K.5/50
<b>SPIROCHETES</b>			
INgene Spirochetas Duplex	Conventional PCR	50	11.BHP.K.5/50
<b>LAWSONIA (EPP)</b>			
INgene Lawsonia	Conventional PCR	50	11.EPP.K.5/50
INgene q Lawsonia	Real Time PCR (TaqMan technology)	100	11.EPP.K.5TX/Q
<b>PORCINE CIRCOVIRUS (PCV2)</b>			
INgene Circovirus	Conventional PCR	50	11.PCV.K.5/50
INgene q Circovirus	Real Time PCR (TaqMan technology)	100	11.PCV.K.5TX/Q
<b>PORCINE PARVOVIRUS</b>			
INgene PPV	Conventional PCR	50	11.PPV.K.5/50
INgene q PPV	Real Time PCR (TaqMan technology)	100	11.PPV.K.5SK/Q
<b>PORCINE CORONAVIRUS (PRCV/TGEV)</b>			
INgene TGE/PRC	Conventional PCR	50	11.TGE.K.5/50
<b>PORCINE REPRODUCTIVE AND RESPIRATORY SYNDROME (PRRSV)</b>			
INgene Universal PRRS	Conventional PCR	50	11.PRU.K5/50
INgene q PRRS	Real Time PCR (SYBR technology)	100	11.PRU.K.5SX/Q
<b>PRRSV/PCV</b>			
INgene PRRS-PCV Duplex	Conventional PCR	50	11.RED.K.5/50

## PCR kits for RUMINANTS infectious agents



Product name	Method	No. of tests	Article No.
<b>INFECTIOUS BOVINE RHINOTRACHEITIS VIRUS (IBRV)</b>			
INgene IBR	Conventional PCR	50	12.IBR.K5/50
INgene q IBR	Real Time PCR (SYBR technology)	100	12.IBR.K.5SX/Q

## PCR kits for AVIAN infectious agents



Product name	Method	No. of tests	Article No.
<b>CAMPYLOBACTER</b>			
INgene Campylobacter Nested	Conventional PCR	50	18.CAM.K.5/50
INgene q Campylobacter	Real Time PCR (SYBR technology)	100	18.CAM.K.5SX/Q
<b>INFECTIOUS BURSAL DISEASE VIRUS (GUMBORO-IBDV)</b>			
INgene Gumboro Nested	Conventional PCR	50	18.IBD.K.5/50
INgene q Gumboro	Real Time PCR (SYBR technology)	100	18.IBD.K.5SX/Q
<b>INFECTIOUS BRONCHITIS VIRUS (IBV)</b>			
INgene IBV	Conventional PCR	50	18.IBV.K.5/50
INgene q IBV	Real Time PCR (SYBR technology)	100	18.IBV.K.5SX/Q
<b>LARINGOTRACHEITIS INFECTIOUS VIRUS (ILT)</b>			
INgene Laringotracheitis	Conventional PCR	50	18.ILT.K.5/50
INgene q Laringotracheitis	Real Time PCR (SYBR technology)	100	18.ILT.K.5SX/Q
<b>MYCOPLASMA GALLISEPTICUM</b>			
INgene Mycoplasma gallisepticum MGC2	Conventional PCR	50	18.MGC.K.5/50
INgene Mycoplasma gallisepticum	Conventional PCR	50	18.MYG.K.5/50
INgene q Mycoplasma Duplex	Real Time PCR (TaqMan Technology)	100	18.MGS.K.5TX/Q
INgene q Mycoplasma gallisepticum	Real Time PCR (TaqMan Technology)	100	18.MYG.K.5TX/Q
<b>MYCOPLASMA GALLISEPTICUM / SYNOVIAE</b>			
INgene Mycoplasma Duplex	Conventional PCR	50	18.MGS.K.5/50
<b>MYCOPLASMA SYNOVIAE</b>			
INgene Mycoplasma synoviae	Conventional PCR	50	18.MYS.K.5/50
INgene q Mycoplasma synoviae	Real Time PCR (TaqMan Technology)	100	18.MYS.K.5SX/Q
INgene q DMS VlhA SYBR Detection	Real Time PCR (TaqMan Technology)	100	18.DMS.K.5SX/Q
<b>SALMONELLA SPP.</b>			
INgene Salmonella	Conventional PCR	50	18.SAL.K.5/50
INgene q Salmonella	Real Time PCR (SYBR technology)	100	18.SAL.K.5TX/Q
<b>TURKEY RHINOTRACHEITIS VIRUS (TRTV)</b>			
INgene TRT	Conventional PCR	50	18.APV.K.5/50
INgene q TRT	Real Time PCR (SYBR technology)	100	18.APV.K.5SX/Q

## PCR kits for CANINE infectious agents



Product name	Method	No. of tests	Article No.
<b>CANINE DISTEMPER VIRUS (CDV)</b>			
INgene Moquillo	Conventional PCR	50	15.CDV.K.5/50
INgene q Moquillo	Real Time PCR (TaqMan technology)	100	15.CDV.K.5TX/Q
<b>CANINE PARVOVIRUS (CPV)</b>			
INgene CPV	Conventional PCR	50	15.CPV.K.5/50
INgene q CPV	Real Time PCR (SYBR technology)	100	15.CPV.K.5SX/Q
<b>EHRlichia</b>			
INgene Ehrlichia	Conventional PCR	48	15.EHR.K.5/48
<b>LEISHMANIA</b>			
INgene Leishmania	Conventional PCR	50	15.LSH.K.5/50
INgene q Leishmania	Real Time PCR (TaqMan technology)	100	15.LSH.K.5TX/Q



# ANIMAL SPECIES



Animal species identification in food and feed products has grown in importance due to public health, economic and legal concerns. Even religious and ethical criteria can be at risk in the case of food adulteration. To verify the authenticity of products, food testing laboratories need reliable methods, which can answer these questions.

The application of specific methods can determine if lower-priced substitutes replace premium products such as chicken instead of turkey or cow milk instead of goat milk. Confidence that vegetarian or vegan food contains no trace of animal products is essential to brand integrity.

## Eurofins GeneScan DN*Animal* Kits

The DN*Animal* product line offers a broad spectrum of sensitive real-time PCR kits for the most domestic animal species as well as specific applications like halal testing.

Most DN*Animal* kits detect the species or taxonomic group in question with a sensitivity of 0.01%. Some specific kits (e.g. the DN*Animal Ident* Pig HS) detecting mitochondrial targets are even more sensitive.

### **DN*Animal* Screen**

- Kits cover different taxonomic groups
- Application for various food and feed relevant testing strategies, i.e. to test vegan or vegetarian food

### **DN*Animal* Ident**

- For identifying or excluding individual animal species

## Key Benefits

- Kits are validated on industry-leading thermocyclers
- Contain an IPC (internal positive control) to exclude false-negative results
- Have undergone extensive specificity and sensitivity validation
- Produce robust and reliable results
- DNA extraction kits available for different matrices

## Additional Products and Services

- DNA extraction kits for different matrices, even for highly processed matrices such as pure gelatin
- Animal species DNA as positive control DNA and meat testing standards with defined percentages
- From online courses to in-house training, a dedicated team is available to provide assistance



## DNAnimal Kits



Product	Product description	No. of wells	Article No.
DNAnimal Screen Halal IPC (LR) Kit for simultaneous RT-PCR detection of pork and horse/donkey DNA	96 multiplex real-time PCR reactions with IPC, all reagents and controls included, for up to 46 samples. Validated for ABI7500/Fast, MX3005P/MX3000P, AriaMX, CFX96 and LC480.	96	5422221210
DNAnimal Screen Mammal & Bird IPC Kit for detection of mammalian and avian DNA	96 real-time PCR rxns with IPC, all reagents and controls included, for up to 46 samples. Validated for ABI7900, ABI7500/Fast, MX3005P/MX3000P, AriaMX, CFX96 and LC480.	96	5422211210
DNAnimal Screen Ruminant IPC Kit for detection of ruminant DNA	96 real-time PCR rxns with IPC, all reagents and controls included, for up to 46 samples. Validated for ABI7900, ABI7500/Fast, MX3005P/ MX3000P, CFX96 and LC480.	96	5422221110
DNAnimal Screen Fish IPC Kit for detection of fish DNA	96 real-time PCR rxns with IPC, all reagents and controls included, for up to 46 samples. Validated for ABI7900, ABI7500/Fast, MX3005P/MX3000P and AriaMX.	96	5422211310
DNAnimal Screen Bird IPC Kit for detection of avian DNA	96 real-time PCR rxns with IPC, all reagents and controls included, for up to 46 samples. Validated for ABI7900, ABI7500/Fast, MX3005P/MX3000P and LC480.	96	5422211410
DNAnimal Ident Beef IPC Kit for identification of bovine DNA (detects besides Bos taurus also bison and several other Bos species)	96 real-time PCR rxns with IPC, all reagents and controls included, for up to 46 samples. Validated for ABI7900, ABI7500/Fast, MX3005P/MX3000P, AriaMX, CFX96 and LC480.	96	5422220610
DNAnimal Ident Pork IPC Kit for identification of porcine DNA (both, Sus scrofa domestica and scrofa)	96 real-time PCR rxns with IPC, all reagents and controls included, for up to 46 samples. Validated for ABI7900, ABI7500/Fast, MX3005P/MX3000P, AriaMX, CFX96 and LC480.	96	5422211910
DNAnimal Ident Pig HS IPC (LR) High Sensitivity kit for identification of porcine DNA (both, Sus scrofa domestica and scrofa) in low DNA samples (e.g. gelatin)	96 real-time PCR rxns with IPC, all reagents and controls included, for up to 46 samples. Validated for ABI7500/Fast, MX3005P/MX3000P and LC480. Intended for use with DNAExtractor Gelatin kit.	96	5422211810
DNAnimal Ident Meat IPC Kit for identification of bovine and porcine DNA	2x50 RT-PCR rxns with IPC, all reagents and positive control DNA included. Validated for ABI7900, ABI7500/Fast, MX3005P/MX3000P, AriaMX, CFX96 and LC480.	2 x 50	5422212010
DNAnimal Ident Chicken IPC (LR) Kit for identification of chicken (Gallus gallus) DNA	96 real-time PCR rxns with IPC, all reagents and controls included, for up to 46 samples. Validated for ABI7500/Fast, MX3005P/ MX3000P, AriaMX, CFX96 and LC480.	96	5422221010
DNAnimal Ident Duck IPC Kit for identification of duck (Anas platyrhynchos and Cairina moschata) DNA	96 real-time PCR rxns with IPC, all reagents and controls included, for up to 46 samples. Validated for ABI7900, ABI7500/Fast, MX3005P/ MX3000P and LC480.	96	5422211410
DNAnimal Ident Goose IPC Kit for identification of goose DNA	96 real-time PCR rxns with IPC, all reagents and controls included, for up to 46 samples. Validated for ABI7900, ABI7500/Fast, MX3005P/3000P and LC480.	96	5422220810
DNAnimal Ident Turkey IPC Kit for identification of turkey DNA	96 real-time PCR rxns with IPC, all reagents and controls included, for up to 46 samples. Validated for ABI7900, ABI7500/Fast, MX3005P/3000P and LC480.	96	5422211510
DNAnimal Ident Goat IPC Kit for identification of goat DNA	96 real-time PCR rxns with IPC, all reagents and controls included, for up to 46 samples. Validated for ABI7900, ABI7500/Fast, MX3005P/3000P and LC480.	96	5422211610
DNAnimal Ident Sheep IPC Kit for identification of sheep DNA	96 real-time PCR rxns with IPC, all reagents and controls included, for up to 46 samples. Validated for ABI7900, ABI7500/Fast, MX3005P/3000P, AriaMX, CFX96, LC480.	96	5422211710
DNAnimal Ident Horse IPC (LR) Kit for identification of horse DNA	96 real-time PCR rxns with IPC, all reagents and controls included, for up to 46 samples. Validated for ABI7500/Fast, CFX96, AriaMX, MX3005P/ MX3000P.	96	5422220110
DNAnimal Ident Water Buffalo IPC (LR) Kit for identification of water buffalo DNA	96 real-time PCR rxns with IPC, all reagents and controls included, for up to 46 samples. Validated for ABI7500/Fast, LC480, MX3005P/3000P.	96	5422220910
DNAnimal Ident Donkey (LR) Kit for identification of donkey DNA.	96 real-time PCR reactions, all reagents and controls included, for up to 46 samples. Validated for ABI7500/Fast and MX3005P/MX3000P.	96	5422220210

## Meat Standards



Product	Product description	Quantity	Article No.
1% w/w horse in beef meat standard i.e. for threshold testing according to EURL-AP	2,0 +/- 0,1 g minced meat, frozen	2,0 +/- 0,1 g	5122700102
1% w/w pork in beef meat standard i.e. for threshold testing	2,0 +/- 0,1 g minced meat, frozen	2,0 +/- 0,1 g	5122700202
0,1% w/w pork in beef meat standard i.e. for threshold testing	2,0 +/- 0,1 g minced meat, frozen	2,0 +/- 0,1 g	5122700302
1% w/w beef in pork meat standard i.e. for beef threshold testing	2,0 +/- 0,1 g minced meat, frozen	2,0 +/- 0,1 g	5122700502

## Control DNAs



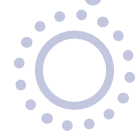
Product	Quantity	Article No.
Genomic DNA Atlantic Cod ( <i>Gadus morhua</i> )	0.2 ml [1 ng/μL]	5222582704
Genomic DNA Atlantic Halibut ( <i>Hippoglossus hippoglossus</i> )	0.2 ml [1 ng/μL]	5222582804
Genomic DNA Cat ( <i>Felis silvestris</i> )	0.2 ml [1 ng/μL]	5222580804
Genomic DNA Cattle ( <i>Bos taurus</i> )	0.2 ml [1 ng/μL]	5222581304
Genomic DNA Cattle ( <i>Bos taurus</i> )	150 μL [10 ng/μl]	5222581306
Genomic DNA Chicken ( <i>Gallus gallus</i> )	0.2 ml [1 ng/μL]	5222580504
Genomic DNA Dog ( <i>Canis lupus familiaris</i> )	0.2 ml [1 ng/μL]	5222580604
Genomic DNA Duck	0.2 ml [1 ng/μL]	5222582404
Genomic DNA Fallow Deer ( <i>Dama dama</i> )	0.2 ml [1 ng/μL]	5222580404
Genomic DNA Goat ( <i>Capra hircus</i> )	0.2 ml [1 ng/μL]	5222581804
Genomic DNA Goose ( <i>Anser</i> )	0.2 ml [1 ng/μL]	5222580204
Genomic DNA Hare ( <i>Lepus europaeus</i> )	0.2 ml [1 ng/μL]	5222580304
Genomic DNA Horse ( <i>Equus caballus</i> )	0.2 ml [1 ng/μL]	5222581004
Genomic DNA Human ( <i>Homo sapiens</i> )	0.2 ml [1 ng/μL]	5222580904
Genomic DNA Kangaroo ( <i>Macropus rufus</i> )	0.2 ml [1 ng/μL]	5212583204
Genomic DNA Ostrich ( <i>Struthio camelus</i> )	0.2 ml [1 ng/μL]	5222582104
Genomic DNA Pig ( <i>Sus scrofa domestica</i> )	0.2 ml [1 ng/μL]	5222581504
Genomic DNA Rabbit ( <i>Oryctolagus cuniculus</i> )	0.2 ml [1 ng/μL]	5222580704
Genomic DNA Red Deer ( <i>Cervus elaphus</i> )	0.2 ml [1 ng/μL]	5222581904
Genomic DNA Roe Deer ( <i>Capreolus capreolus capreolus</i> )	0.2 ml [1 ng/μL]	5222581204
Genomic DNA Saithe/Pollock ( <i>Pollachius virens</i> )	0.2 ml [1 ng/μL]	5222582604
Genomic DNA Sika Deer ( <i>Cervus nippon</i> )	0.2 ml [1 ng/μL]	5222582204
Genomic DNA Sheep ( <i>Ovis aries</i> )	0.2 ml [1 ng/μL]	5222581404
Genomic DNA Springbok ( <i>Antidorcas marsupialis</i> )	0.2 ml [1 ng/μL]	5222581604
Genomic DNA Turkey ( <i>Meleagris gallopavo</i> )	0.2 ml [1 ng/μL]	5222581104
Genomic DNA Water Buffalo ( <i>Bubalus bubalis</i> )	0.2 ml [1 ng/μL]	5222580004
Genomic DNA Water Buffalo ( <i>Bubalus bubalis</i> )	150 μL [10 ng/μl]	5222580006
Genomic DNA Wild Boar ( <i>Sus scrofa scrofa</i> )	0.2 ml [1 ng/μL]	5222581704



## Control DNAs



Product	Quantity	Article No.
Genomic DNA Atlantic Halibut ( <i>Hippoglossus hippoglossus</i> )	150 µL [100 copies/µL]	5212582401
Genomic DNA Bison ( <i>Bison bison</i> )	150 µL [100 copies/µL]	5212583401
Genomic DNA Cattle ( <i>Bos taurus</i> )	150 µL [100 copies/µL]	5212581301
Genomic DNA Chamoise ( <i>Rupicapra rupicapra</i> )	150 µL [100 copies/µL]	5212583501
Genomic DNA Chicken ( <i>Gallus gallus</i> )	150 µL [100 copies/µL]	5212580501
Genomic DNA Donkey ( <i>Equus asinus</i> )	150 µL [100 copies/µL]	5212582801
Genomic DNA Duck	150 µL [100 copies/µL]	5212582501
Genomic DNA Fallow Deer	150 µL [100 copies/µL]	5212580401
Genomic DNA Gemsbok ( <i>Oryx gazella</i> )	150 µL [100 copies/µL]	5212583701
Genomic DNA Gnu ( <i>Connochaetes</i> )	150 µL [100 copies/µL]	5212583801
Genomic DNA Goat ( <i>Capra hircus</i> )	150 µL [100 copies/µL]	5212581801
Genomic DNA Horse ( <i>Equus caballus</i> )	150 µL [100 copies/µL]	5212582901
Genomic DNA Kudu ( <i>Tragelaphus</i> )	150 µL [100 copies/µL]	5212584001
Genomic DNA Pig ( <i>Sus scrofa domestica</i> )	150 µL [100 copies/µL]	5212581501
Genomic DNA Pigeon ( <i>Columba livia</i> )	150 µL [100 copies/µL]	5212584101
Genomic DNA Quail ( <i>Coturnix coturnix</i> )	150 µL [100 copies/µL]	5212584201
Genomic DNA Rat ( <i>Rattus norvegicus</i> )	150 µL [100 copies/µL]	5212585201
Genomic DNA Red Deer	150 µL [100 copies/µL]	5212581901
Genomic DNA Roe Deer	150 µL [100 copies/µL]	5212581201
Genomic DNA Sheep ( <i>Ovis aries</i> )	150 µL [100 copies/µL]	5212581401
Genomic DNA Turkey ( <i>Meleagris gallopavo</i> )	150 µL [100 copies/µL]	5212581101
Genomic DNA Water Buffalo ( <i>Bubalus bubalis</i> )	150 µL [100 copies/µL]	5222580001
Genomic DNA Yak ( <i>Bos mutus</i> )	150 µL [100 copies/µL]	5212584401





# ENVIRONMENT AND WATER



Water is the most important resource we have, and it is vitally important for all of us. So, in many countries it is the object of numerous environmental laws and regulations. This relates not only to drinking water but ultimately also for the whole water cycle, for example surface and ground water, process and waste water.

When it comes to water testing, the flexibility to use either instrumental analysis methods or field based systems can provide distinct advantages to users. Laboratory based systems are accurate and can be efficient with higher volume workflows, they can also be more costly and time consuming. Commercially available rapid test kits can provide quicker results at a lower cost.

## Eurofins Abraxis Environment and Water Kits

Eurofins Technologies, through its subsidiary Abraxis provides innovative, comprehensive, real time, field and lab based testing solutions for water and environmental testing.

### Algal Toxins

Multiple technologies, formats and applications are available to allow testing laboratories to achieve their required regulatory water analysis objectives. Anatoxin-a, BMAA, Cylindrospermopsin, Microcystins, Saxitoxins and Anabaenopeptins test kits form the core for cyanotoxins testing.

### Pesticides

Glyphosate Kits: the only commercially available ELISA and Test Strip test kits to provide both quantitative and qualitative detection of glyphosate in water, with additional applications in soil, crops, food and biological samples. Protocols are available for various unique sample matrices.

Other pesticide kits available include: 2,4-D, Acetochlor, Alachlor, Atrazine, Metalachlor, Imidacloprid, Organophosphate, Pyrethroids, Trifluralin, DDE/DDT, Diuron and Fluridone.

### Estrogen Kits

Estrogen test kits are provided for the detection of estrogenic compounds using ELISA technology. Both the EE2 test kit and the E2 test kit form the core of the Estrogen test kits. Multiple ELISA formats are available for E2 as well as an E2 test kit for milk.

### Industrial Chemicals / Hydrocarbons

One of Abraxis' core strengths is developing sensitive and specific antibodies against small molecules, such as the endocrine disruptors triclosan, phthalates, polychlorinated biphenyls (PCBs) and bisphenol A, found in many consumer products.

## Key Benefits

- Unmatched expertise in water testing
- Multiple technologies, formats and applications to easily achieve different objectives
- Innovative product portfolio

## Life Sciences and R&D

AbraMag<sup>®</sup> Magnetic Beads are superparamagnetic, non-aggregating iron oxide particles for sample prep, or for capturing/purifying targets such as proteins, antibodies, DNA/RNA (direct, or via ChIP), exosomes, and E. coli. AbraMag's design enables faster binding kinetics while matching the capacity, sensitivity, and selectivity of major brands. Ideal for both manual and automated biomedical and research applications.

AbraMag<sup>®</sup> Magnetic Bead Kits provide magnetic beads, plus the buffers needed for extraction and purification. The magnetic separators (or magnetic holders) feature rare-earth magnets embedded in plastic housing, and are available in a variety of shapes and sizes. Custom magnetic separators are available to suit specific needs.



## Algal Toxins



Product	Product format	Quantity	Article No.
Anabaenopeptins, ELISA	ELISA Plate	96 tests	520070
Anatoxin-a (VFDF)	ELISA Plate	96 tests	520060
Anatoxin-a (VFDF)	Dipstick	5 tests 20 tests	520042 520043
Anatoxin-a (VFDF)	Receptor-Binding Assay (RBA)	96 tests	520050
BMAA	ELISA Plate	96 tests	520040
Cylindrospermopsin	ELISA Plate	96 tests	520050
Cylindrospermopsin, 0-10 ppb, with QuikLyse® Feature	Dipstick, Source Drinking Water	5 tests 20 tests	520029 520030
Microcystins	Coated Tube ELISA	40 tests	520012a
Microcystins/Nodularins (ADDA) (EPA ETV) (EPA Method 546)	ELISA Plate	96 tests	520011
Microcystins/Nodularins (ADDA) OH (EPA ETV) (EPA Method 546), includes LCRC	ELISA Plate	96 tests	5200110H
Microcystins/Nodularins SAES (EPA ETV)	ELISA Plate	96 tests	520011SAES
Microcystins/Nodularins DM (EPA ETV) (CCL4)	ELISA Plate	96 tests	522015
Microcystins/Nodularins (EPA ETV)	PP2A Plate	96 tests	520032
Microcystins/Nodularins (ADDA) Serum	ELISA Plate	96 tests	522031
QuikLyse®	Lysing and filtration	45 tests	529911
Microcystins, 0-5 ppb with QuikLyse® Feature	Dipstick, Source Drinking Water	5 tests 20 tests	520019 520020
Microcystins, up to 5 ppb	Dipstick, Finished Drinking Water	5 tests 20 tests	520016 520017
Microcystins, 0-10(20) ppb with QuikLyse® Feature	Dipstick, Recreational Water	5 tests 20 tests	520023 520022
Microcystins Dipstick, 0.3 ppb	Dipstick, Finished Drinking Water	20 tests	520046
Saxitoxins (PSP) (EC 2002/225 Compliant)	ELISA Plate	96 tests	52255B
Saxitoxins (PSP) Shipboard (ISSC 09-107)	ELISA Plate	96 tests 20 tests	52255SB 530009
Saxitoxins (PSP) Shipboard Starter Pack	Starter Pack		470061C
Saxitoxins (PSP) Shipboard Starter Pack without computer	Starter Pack		470061D
Brevetoxin (NSP)	ELISA Plate	96 tests	520026
Domoic Acid (ASP) (AOAC Method 2006.02)	ELISA Plate	96 tests	520501
Domoic Acid (Onsite Technologies)	ELISA Plate	96 tests	ON0021
Okadaic Acid (DSP) (EC 2002/225 Compliant)	ELISA Plate	96 tests	520021
Okadaic Acid (DSP)	PP2A Plate	96 tests	520025
Anatoxin-a (+) Standard, Certified	Standard	0.5 ml	300586
Anatoxin-a (+) Standard	Standard	10 ug/ml, 0.5 ml	300620
Homo-anatoxin-a Standard	Standard	10 ug/ml, 0.5 ml	300648
13 C4-(+)-Anatoxin-a	Standard	10 ug/ml, 0.5 ml	300505
BMAA D3 Standard	Standard	1.0 mg	300622
Cylindrospermopsin Standard	Standard	0.5 mg	300624
Cylindrospermopsin Standard, Certified	Standard	0.5 ml	300588
Cylindrospermopsin Standard	Standard	10 µg/ml, 1 ml	300626
7-epi-Cylindrospermopsin Standard	Standard	5 ug	300651
7-deoxy-Cylindrospermopsin Standard	Standard	5 ug	300653
[15N5] Cylindrospermopsin Standard	Standard	10 ug/ml, 0.5 ml	300504
[15N5] 7-epi-Cylindrospermopsin Standard	Standard	5 ug	300506
[15N5] 7-deoxy-Cylindrospermopsin Standard	Standard	5 ug	300508
Microcystin HiIR Standard	Standard	10 ug/ml, 1 ml	300654
Microcystin LA Standard	Standard	10 µg/ml, 1 ml	300628
Microcystin LF Deuterated Standard	Standard	10 ug/ml, 0.5 ml	300500
Microcystin LF Standard	Standard	10 ug/ml, 1.0 ml	300646
Microcystin LR Standard	Standard	0.5 mg	300630
Microcystin LR Standard	Standard	10 µg/ml, 1ml	300632

Product	Product format	Quantity	Article No.
Desmethyl Microcystin LR Standard	Standard	10 ug/ml, 1 ml	300656
Microcystin LR Deuterated (D7) Standard	Standard	10 ug/ml, 0.5 ml	300502
Microcystin LR Ethylated (D5, 99%) Standard	Standard	25 µg	300507
Microcystin LR Standard, Certified	Standard	0.5 ml	300580
Microcystin LW Standard	Standard	10 ug/ml, 1 ml	300650
Microcystin LY Standard	Standard	10 ug/ml, 1 ml	300634
Microcystin RR Standard	Standard	10 µg/ml, 1 ml	300636
Desmethyl Microcystin RR Standard	Standard	10 ug/ml, 1 ml	300658
Microcystin RR Standard, Certified	Standard	0.5 ml	300582
Microcystin WR Standard	Standard	10 ug/ml, 1 ml	300652
Microcystin YR Standard	Standard	10 µg/ml, 1 ml	300638
Nodularins Standard	Standard	10 µg/ml, 1 ml	300640
Nodularins Standard, Certified	Standard	0.5 ml	300591
Saxitoxins Standard, Certified	Standard	0.5 ml	300590
Saxitoxin Standard	Standard	10 ug/ml, 1 ml	300642

## Algal Toxins Related Products



Product	Product Format	Quantity	Article No.
Anatoxin-a	Sample Diluent	25 ml 1 L	530010 53001L
Cylindrospermopsin	MDL Study Solution	1 ml, 3 vials 10 ml, 3 vials	300705 300705C
Cylindrospermopsin	Seawater Sample Treatment Solution	45 tests	529914
Microcystins MDL Study Solution	MDL Study Solution	1 ml, 3 vials	300700
Microcystins MDL Study Solution (CAAS)	MDL Study Solution	10 ml, 1 vial	300700C
Microcystins Field Screen	Accessory Pack, Lysing, Freeze-thaw	20 tests	530038
Microcystins/Nodularins (ADDA) Accessory Pack for Method 546	Accessory pack	3 ml, 1.5 ml, 1.5 ml	520013
Microcystins/Nodularins (ADDA) Spiking Solution, MCT-LR	Spiking Solution	10 ml	300702
Microcystins LR Check Samples, set of 3 (0, 2 and 20 ppb)	Check Samples	Set of 3 (0, 2, 20 ppb)	422011
Microcystins/Nodularins (ADDA) (EPA ETV)	Seawater Clean Up Kit	45 tests	529912
Microcystins/Nodularins DM	Seawater Sample Treatment Solution	45 tests	529913
Saxitoxins (PSP) (EC 2002/225 Compliant)	Seawater standards		52255SW
Saxitoxins (PSP)	MDL Study Solution	1 ml, 3 vials 10 ml, 1 vial	300710 300710C
Saxitoxins (PSP)	Sample Diluent	25 ml 1 L	530010 53001L
Brevetoxin (NSP)	Sample Diluent	30 ml	520027
Brevetoxin (NSP)	Seawater Sample Pretreatment Solution	25 ml	520028

## Legionella

Product	Product description	Quantity	Article No.
BACGene Legionella Multiplex	BACGene Legionella Multiplex, kit for 96 lysis and real-time PCR reactions for multiplex confirmation & identification of Legionella spp., Legionella pneumophila & Legionella pneumophila subsp. pneumophila SG1 colonies. Increased control over cross contamination due to UNG digestion in the PCR-workflow.	96 tests	5123222601

## Estrogen Kits (Not available in Europe)



Product	Product format	Quantity	Article No.
Estrone (E1)	ELISA plate	96 tests	590061
17-Beta Estradiol (E2)	ELISA plate	96 tests	590062
Estrogens (E1+E2+E3)	ELISA plate	96 tests	590071
Ethinylestradiol (EE2)	ELISA plate	96 tests	590051

## Industrial Chemicals / Hydrocarbons



Product	Product format	Quantity	Article No.
Alkylphenols (AP) <i>Not available in Europe</i>	ELISA plate	96 tests	590012
Benzo(a)Pyrene (B(a)P)	ELISA plate	96 tests	530039
Bisphenol A (BPA) <i>Not available in Europe</i>	ELISA plate	96 tests	590023
Dioxins/Furans (TCDD)	ELISA plate	96 tests	530037
Coplanar PCBs	ELISA plate	96 tests	530011
PCBs Higher Chlorinated	ELISA plate	96 tests	530041
PCBs Higher Chlorinated	Magnetic Particle	100 tests	530001
Polybrominated Diphenyl Ether (PBDE)	ELISA plate	96 tests	530045
Polybrominated Diphenyl Ether (PBDE)	Magnetic Particle	100 tests	500090
Phthalates	ELISA plate	96 tests	530050
Triclosan	ELISA plate	96 tests	530114
Triclosan	Magnetic Particle	100 tests	530111

## Industrial Chemicals / Hydrocarbons Related Products

Product	Product Format	Quantity	Article No.
PCBs Higher Chlorinated	Sample diluent	1 L	530002
PCBs Higher Chlorinated (1254, 1260, 1248, 1242, 1262, 1232, 1268, 1016, or 1221)	Calibrator Sets		530003
Soil Extraction Kit	Sample Prep	12 tests	530005
Triclosan	Sample Diluent	100 ml	530112

## Markers for Bioactivity



Product	Product format	Quantity	Article No.
Caffeine	ELISA plate	96 tests	515575
Carbamazepine	ELISA plate	96 tests	515585
Triclosan	Magnetic Particle	100 tests	530111
Triclosan	ELISA plate	96 tests	530114

## Surfactants (Not available in Europe)

Product	Product format	Quantity	Article No.
Alkyl Ethoxylate (AE)	ELISA Plate	96 tests	590001
Alkylphenol Ethoxylate (APE)	ELISA Plate	96 tests	520041
Linear Alkylbenzene Sulfonate (LAS)	ELISA Plate	96 tests	520031

## Pesticides



Product	Product format	Quantity	Article No.
2,4-D	ELISA plate	96 tests	54003A
2,4-D	Coated Tube ELISA	40 tests	54004B
Alachlor	Magnetic Particle	100 tests	500071
Alachlor	ELISA Plate	96 tests	500076
Atrazine	Magnetic Particle	100 tests	500001
Atrazine	ELISA Plate	96 tests	520005
Atrazine	Dipstick	20 tests	500009
Azoxystrobin	ELISA Plate	96 tests	500701
DDE/DDT	ELISA Plate	96 tests	540041
Diuron	ELISA Plate	96 tests	520001
Fluridone	Magnetic Particle	100 tests	500511

## Pesticides: unique products



Product	Product format	Quantity	Article No.
Glyphosate	Magnetic Particle	120 tests	500081
Glyphosate	ELISA Plate	96 tests	500086
Glyphosate	Dipstick	5 tests	500098
Glyphosate	Dipstick	20 tests	500095
Imidacloprid/Clothianidin	ELISA Plate	96 tests	500800
Metolachlor	Magnetic Particle	100 tests	500061
Metolachlor	ELISA Plate	96 tests	500065
Organophosphate/Carbamate (OP/C)	Coated Tube ELISA	20 tests	550051
Organophosphate/Carbamate (OP/C)	ELISA Plate	96 tests	550055
Penoxsulam	Magnetic Particle	100 tests	500501
Pyraclostrobin	ELISA Plate	96 tests	500705
Pyrethroids	Magnetic Particle	100 tests	500201
Pyrethroids	ELISA Plate	96 tests	500204
Spinosyn	Coated Tube ELISA	40 tests	500203
Trifluralin	ELISA Plate	96 tests	500601

## Automated Systems / Readers

Product	Product format	Article No.
Cyanotoxin Manual Assay System	System	475010S
Glyphosate ELISA Testing System, Complete	Reader	476GBL10+
Microplate Reader, Model 4303	Reader	475010
Plate Washer, Stat Fax 2600	Washer	475011
Microplate Strip Reader, Model 4700 with Printer	Reader	475007
Tube Reader, Test Tube reader with printer, Model 4500	Reader	475002R
AbraScan® Dipstick Reader III, Handheld reader with supplemental software	Reader	475025B
AbraLab I Handheld Wireless Test Strip Reader with supplemental software	Reader	475030

## Training / System Installation / Maintenance

Product	Article No.
On-site training/refresher training for Abraxis Manual System	000112ABX
On-site training/refresher training for Non-Abraxis Manual System	0001120TH
Advanced training at Abraxis, 1 person, 2 days	000112AIT



# LIFE SCIENCES / R&D

## AbraMag® Magnetic Purification Kits

Product	Product format	Quantity	Article No.
Genomic DNA Magnetic Purification Kit	Magnetic Beads Kit	100 tests	555020
Plasmid DNA Magnetic Purification Kit	Magnetic Beads Kit	100 tests	555005
Protein A Magnetic Beads Kit	Magnetic Beads Kit	20 tests	555000
Protein G Magnetic Beads Kit	Magnetic Beads Kit	20 tests	555010

## Magnetic Separator Racks

Product	Compatibility	Article No.
Plate Magnetic Separator	1 x 96-well plate (side pull)	472235
Plate Magnetic Separator	2 x 96-well plate (bottom pull)	472236
Tube Magnetic Separator	60 x 11-13 mm tubes	472231
Tube Magnetic Separator	6 x 50 mL tubes	472291
Tube Magnetic Separator	5 x 15 mL tubes and 3 x 50 mL tubes	472250
Tube/Microcentrifuge Tube Magnetic Separator	1 x 1.5 mL or 1 x 15 mL and 1 x 50 mL	472280
Microcentrifuge Tube Magnetic Separator	1 x 1.5 mL microcentrifuge tube	472270
Microcentrifuge Tube Magnetic Separator	6 x 1.5 mL microcentrifuge tubes	472260
Microcentrifuge Tube Magnetic Separator	32 x 1.5 mL microcentrifuge tubes	472287
Flask Magnetic Separator	Tissue culture flasks	472240

## AbraMag® Magnetic Beads

Product	Product format	Quantity	Article No.
Amine	Magnetic Beads	50 mg	544080
Amine	Magnetic Beads	125 mg	544081
Carboxyl	Magnetic Beads	50 mg	544085
Carboxyl	Magnetic Beads	125 mg	544086
Biotin	Magnetic Beads	10 mg	544000
Biotin	Magnetic Beads	25 mg	544001
Biotin	Magnetic Beads	5 mg	544002
Streptavidin	Magnetic Beads	10 mg	544050
Streptavidin	Magnetic Beads	25 mg	544051
Streptavidin	Magnetic Beads	5 mg	544052
anti-Rabbit IgG	Magnetic Beads	20 mg	544010
anti-Rabbit IgG	Magnetic Beads	100 mg	544011
anti-Rabbit IgG	Magnetic Beads	5 mg	544012
anti-Mouse IgG	Magnetic Beads	20 mg	544020
anti-Mouse IgG	Magnetic Beads	100 mg	544021
anti-Mouse IgG	Magnetic Beads	5 mg	544022
anti-Human IgG	Magnetic Beads	20 mg	544060
anti-Human IgG	Magnetic Beads	100 mg	544061
anti-Human IgG	Magnetic Beads	5 mg	544062
Protein A	Magnetic Beads	10 mg	544030
Protein A	Magnetic Beads	25 mg	544031
Protein A	Magnetic Beads	5 mg	544032
Protein G	Magnetic Beads	10 mg	544040
Protein G	Magnetic Beads	25 mg	544041
Protein G	Magnetic Beads	5 mg	544042
DNA Purification	Magnetic Beads	12 mg	544090
DNA Size Selection	Magnetic Beads	5 ml	544100
DNA Size Selection	Magnetic Beads	50 ml	544103
DNA Size Selection	Magnetic Beads	450 ml	544106
PCR Clean-Up	Magnetic Beads	5 ml	555030
PCR Clean-Up	Magnetic Beads	50 ml	555035
PCR Clean-Up	Magnetic Beads	450 ml	555040







# INSTRUMENTS

Comprehensive diagnostic solutions improve lab efficiency and minimize overall costs. Our division, Gold Standard Diagnostics offers precise, compact and cost-efficient instruments supported with outstanding customer service. The result is a seamless lab experience while maintaining low total cost of ownership for instrumentation, consumables and support.

These innovative, industry-leading instruments - ThunderBolt® and The BOLT™ - are the standard platforms for Eurofins Technologies ELISA-based diagnostic kits including allergens, food pathogens, mycotoxins, veterinary drug residues, and animal health kits. We are delighted to provide one of the most complete, integrated, and innovative test offerings in the market.

## ThunderBolt®



The ThunderBolt® is an innovative 2-plate, fully automated, open platform that is compact and cost efficient. The user friendly and flexible software is capable of programming a broad range of protocols. The ThunderBolt® is available for both ELISA and Chemiluminescent (CLIA) applications.

### Key Benefits

- Fully-automated: load and walk away
- High capacity: 192 samples
- Open architecture: program any ELISA or Chemiluminescent (CLIA) protocol\* (CLIA protocols require ELISA+CLIA reader option)
- Adaptable: capable of running many different protocols in a single batch
- Built-in reader: ultra-compact and fully-automated reader options
- Compact: smallest and lightest instrument in its class
- User-friendly and flexible software
- Extensive configuration – run up to 8 protocols in a single batch
- On-board camera: monitor internal operations in real-time

## The Bolt™



The Bolt™, a one-plate ELISA+CLIA processor, shares many features of the ThunderBolt®, with a more customizable, lower throughput and cost-effective design. Our interactive user-friendly software provides a simple laboratory experience for instrument operation.

### Key Benefits

- Space saving design – fits standard 60 cm lab bench
- 96 sample capacity
- Program any EIA and CLIA protocol
- High precision syringes
- Low consumables costs (no disposable tips)
- Exterior status indicator light
- Connectivity to a laboratory information system (LIS)

#### Modular Design with Optional:

- Convention incubator
- Linear shaker
- ELISA or ELISA+ CLIA Reader\*

\* CLIA protocols require ELISA + CLIA reader option



## ThunderBolt®



### Unique Features

Intelligent Racks	Automatic sample location management
System Architecture	Open, fully customizable
High Precision Micro-Syringe	Aspirate 1uL with $\leq 3\%$ CV
On-board Reader(s)	Spectrophotometer or Spectrophotometer + Fluorescence Combo Reader
Forced Convection Incubator	Evenly heats using forced air to eliminate "Edge Effect"
On-board Camera	Probe-mounted camera allows remote troubleshooting
Sliding Sample Tray	Easy loading and unloading of samples
Built-in Barcode Reader	Streamline loading and decrease sample tracking errors
Orbital MTP Shaker	Precise adherence to assay protocols
Small Footprint	Fits on a 60cm deep standard laboratory bench

### Technical Specifications

Sample Capacity	192 patient sample positions
Reagent Positions	16 custom reagent positions (22-35mm diameter bottles accepted) Test Tube Size(s) Accepts standard 12, 13, 16 mm diameter, up to 100 mm tall (custom racks available)
MTP Positions	2 positions
Pre-dilution MTP Positions	1 position
Well-Tracking	Independent well tracking and timing
Wash bottles	2 external wash bottle positions
Probe/Needle	Single probe, dual needle
Dispense Volume	Up to 300 $\mu$ l
Aspiration Volume	1 $\mu$ l
Incubation Temperature	Room temperature to 40 °C
Spectrophotometer	405, 450, 490, 550 and 630 nm wavelengths standard (custom available), 0 to 3.0 OD
Chemiluminescence	Detection type: glow, Spectral range: 300-500 nm,
Photomultiplier Tube (PMT)*	Dark count: 50 counts per second (standard), Measuring time: 200 ms (adjustable 1 to 1000 ms) Dynamic range: 6 decades (*optional configuration)
Orbital MTP Shaker	Amplitude: 1 mm, Speed: Up to 900 RPM, 3 MTP (2 reaction, 1 pre- dilution)
Power Supply	100-265V
Dimensions	W: 64 cm, D: 57 cm, H: 45 cm, (W: 25.2 in, D: 22.5 in, H: 17.7 in), H (open): 91.5 cm (36 in)
Weight	30 kg (65 lbs)
CE Marked	Yes

### Software Specifications

Language	Multi-language support
Calculations	Point to point, linear regression, cubic spline, 4PL, 5 PL, Lin-Lin,
Architecture	Fully customizable
Protocol Design	Fully open and configurable test designer; custom reports
LIS Integration	Bi-directional, RS232, USB, TCP/IP
User Interface	MS Windows Graphical User Interface (Windows 7 or above)

## The Bolt™



### Unique Features

System Architecture	Open, fully customizable
High Precision Micro-Syringe	Aspirate 1uL with $\leq 3\%$ CV
On-board Reader(s)	Spectrophotometer or Spectrophotometer + Fluorescence Combo Reader
Forced Convection Incubator	Evenly heats to eliminate "Edge Effect"
Linear Shaker	Precise adherence to assay protocols / No-spill design
Small Footprint	Fits on a 60cm deep standard laboratory bench

### Technical Specifications

Sample Capacity	96 patient sample positions
Reagent Positions	9 custom reagent positions (22-35mm diameter bottles accepted)
Test Tubes	Accepts standard 12, 13, and 16 mm diameter tubes, up to 100 mm tall (custom racks available)
MTP Positions	1 position
Pre-dilution MTP Positions	1 position
Well-Tracking	Independent well tracking and timing
Wash bottles	2 external wash bottle positions
Probe/Needle	Single probe, dual needle
Dispense Volume	Up to 300 $\mu$ l
Aspiration Volume	1 $\mu$ l
Incubation Temperature	Room temperature to 40 °C 405, 450, 490, 550 and 630 nm wavelengths standard (custom available), 0 to 3.0 OD
Chemiluminescence	Detection type: glow, Spectral range: 300-500 nm, Dark count:
Photomultiplier Tube (PMT)*	50 counts per second (standard), Measuring time: 200 ms (adjustable 1 to 1000 ms), Dynamic range: 6 decades (*optional configuration)
Shaker Speed	Up to 900 RPM
Power Supply	100-265V
Dimensions	W: 48.3 cm, D: 53.3 cm, H: 55.8 cm (W: 19.0 in, D: 21.0 in, H: 22.0 in)
Weight	27 kg (59.5 lbs)
CE Marked	Yes

### Software Specifications

Language	Multi-language support
Calculations	Point to point, linear regression, cubic spline, 4PL, 5 PL, Lin-Lin, Lin-Log, Log-Log representation
Architecture	Fully customizable
Protocol Design	Fully open and configurable test designer; custom reports
LIS Integration	Bi-directional, RS232, USB, TCP/IP
User Interface	MS Windows Graphical User Interface (Windows 7 or above)





