

INSTRUMENTATION CATALOGUE: V12

INFRA-RED THERMOMETERS



COFFEE THERMOMETERS



DIGITAL PROBE THERMOMETERS



KITCHEN TIMERS



MEDICAL DATA LOGGERS



PH METERS



- PRODUCTS INCLUDE:
- MEDICAL THERMOMETERS
- DATA LOGGERS
- GAS DETECTORS
- TEMPERATURE MONITORING
- TRACKERS
- AND MUCH, MUCH MORE

The experts in monitoring and measurement



INFRA-RED THERMOMETERS

Model: HLP-IR160 - B

- Temp range: -30°C to +300°C
- Displays temp of the target in under 1 second
- Lense ratio: 12:1 (measures a 1cm 'spot' at 12cm distance)
- Backlit display
- Resolution: 0.2°C
- Laser pointer (class 2 laser)
- Accuracy 2% of reading $\pm 2^\circ\text{C}$
- Low battery indicator
- Serial numbered for in-house traceability



Serial numbered!

Model: 8889

- Measures: -40 up to +500°C with a resolution of 0.1° C.
- Lense: 10:1 ratio,
- Back light for use in dark areas.
- Comes with a soft carry case with batteries, wrist strap, belt clip & manual.
- ES is adjustable - 3 settings: 0.85, 0.90, & 0.95.
- Accuracy: Food temps: 0-10°C $\pm 1^\circ\text{C}$, -20 ~ +420°C 2%.



Food Grade!

Model: 8838

- Infra-Red thermometer with flip out probe
- Infra-Red Temp: - 40C ~ +280°C
- Probe Temp: - 40C ~ +200°C.
- Displays temperatures to 0.1°C.
- Includes timer function.
- Meets and exceeds regulatory accuracy specifications.
- Waterproof moulded design for strength and long life.
- Dual display: Infra-Red & Probe.



Designed for food use!

Model: HACCP Dual

- *Waterproof*, great for any food area.
- *Infra-Red*: Range: -55 ~ 250°C Accuracy 1°C (in food range).
- Lense ratio 3:1, displays 0.1°C.
- *Probe*: Range: -55 ~ 330°C Accuracy 0.8°C (in food range).
- Red / green indicators to show if the temp is "HACCP OK" or "Not OK".
- Includes: Min, Max, Hold functions
- Auto power off to save battery.



Fold out probe

Model: 9881

- Type K thermometer with inbuilt time, date, and temp printer.
- With this unit you can take the temp of any product & print a receipt for the customer with the time and date included with the temp.
- Includes RS232 interface for a computer, & hard carry case.
- Inbuilt 4000 point data logger.
- Temp range: -200°C ~ +1300°C.



Print the reading

Model: 9812

- 5-in-1: Infra-red & probe thermometer, data-logger, print temps, dual channel.
- Modes include: Normal single measurement, manual record up to 99 points, automatically record up to 4,000 points.
- RS232 interface + software to enable PC link for down/up load
- Range: Infra-red: -40~+500°C
- Range: external probe: -20 to +150°C.



5 units in 1!



Supermarkets



Safe for any food type: non-contact



Motor cylinder temps



No need to pierce sealed packs



Find failed circuit breakers



Take multiple temps quickly & easily

Call 1800 500 160 for more details or pricing on any products



Model: Temp Block

- **Make Temp Checks EASY!**
- No more waving a probe thermometer in the fridge to get a reading! No more little bottles of water falling off the shelf!
- Attach the **Temp Block** to the fridge or freezer shelf so that it's always at the ambient temp inside the fridge or freezer.
- When ready to make your temp checks, place the probe of your thermometer into the temp block for almost instant reading.

TEMP BLOCK™ with probe thermometer in place



TEMP BLOCK™ with probe thermometer in place in fridge

TEMP BLOCK™ shown secured to fridge shelf with a cable tie.

Model: Digi-Stick

- Range -50 to 150°C.
- Digital Probe Thermometer.
- 125mm food grade stainless steel probe.
- With probe safety sheath.
- With FSANZ Food Safety information
- Accuracy 1°C
- Auto shut down.
- Battery 1.5 volt, LR44 or equivalent (1 x included)



Lolly-pop style

Model: Tiny-Tee

- Measures: -50°C to +200°C.
- Waterproof.
- Sturdy, stainless steel, food grade probe (3mm diameter, 120mm long).
- Displays temperatures to 0.1°C
- Accuracy 0.6°C
- Complete with Australian Food Standards temperature chart
- Probe safety cover.
- Easy to use.



Handy 'T' shape

Model: Pocket Temp

- Measures: -50°C to +300°C.
- Waterproof.
- Sturdy, 120mm, stainless steel food grade probe.
- Min / Max memory function.
- One second sensing time,
- Low battery indicator.
- Probe safety cover can also be used to make handle longer as "stirring application".
- Displays temps to 0.1°C.
- Accuracy 0.6°C.



Waterproof

Model: Pocket Temp-PRO

- All units have **unique serial number** printed on the side.
- Range: -50°C to + 300°C;
- Probe length: 120mm with reduced tip for fast readings
- Dishwasher safe.
- With silicone sheath for extra water resistance (see picture inset);
- Accuracy: ±0.6°C between -20 ~ +100°C, otherwise ±1%

Other colours available!



Silicone sheath fitted for extra water resistance



With Cal Certificate

Model: RAFT II

- Refrigeration And Food Thermometer
- Pocket sized probe 100mm.
- Separate hand held unit that has a digital display & 2 alarms.
- Probe clips onto the side.
- 1 meter long cable.
- **Plug-in & replaceable probe** with reduced tip for speed
- Accuracy: 0.5°C.
- Suitable for most food uses
- Range : -50°C up to +200°C.
- Audible alarm.



2 part unit



Model: Red-i-Temp II

- **WATERPROOF.**
- **BRIGHT RED COLOUR** - easily seen in the production area.
- Measures: -50°C up to +200°C.
- 110mm food grade stainless steel probe with reduced tip on 1 meter of cable.
- Probe magnetically attaches to the side of the main unit.
- Hold, Max-Min, Alarm settings available (high & low) - always displayed on screen, audible alarm when activated.



Wet area Food use!

Multiple uses: cafes, restaurants, food processing, transport, etc

Call 1800 500 160 for more details or pricing on any products



PROBE THERMOMETERS

Model: Medi-Temp

- 2 sensors in one unit (one in the unit & one external sensor on 2 meters of cable).
- Inbuilt temp: -10°C to +50°C.
- Outer sensor: -50°C to +70°C.
- Accuracy +/- 1°C.
- High & low temp alarm settings & Magnetic mount.
- Max / Min temp memory (eg: so you can check overnight fridge storage temps, etc).
- Large number display.



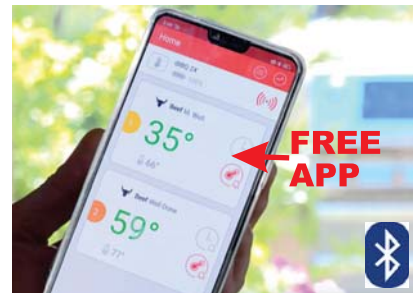
Large display
Max / Min

Model: Meat Mate

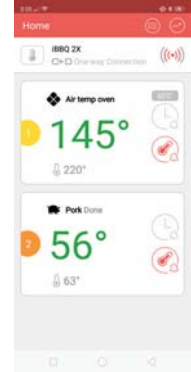
- Self Contained high temperature thermometer.
- Two probes are plug in and are easily replaced if damaged.
- **Each probe can withstand up to 300°C**
- Main unit connects to a FREE mobile phone app via Blue Tooth
- Alarms & cook time can be set remotely
- Also includes a settable timer for each probe.



High temp
dual probe



- Meat Mate connects through to mobile phone using a Free App
- Shows current temp
- Temp graph
- Set how you like your meat cooked



Use a Medi-Temp to monitor temperature of food, medical or any fridge

Model: 8801

- Rugged versatile low cost Industrial Standard Type K Digital thermometer.
- Replaceable, plug in probe and can be fitted with different probes for different uses.
- Measures: -50°C to +1300°C.
- Auto power off & ambient temperature compensated.
- Comes with hard case, battery, manual and 2 x probes.



Professional
model

Model: 8802

- Rugged versatile fast response Type K Digital thermometer.
- May be used for dishwasher temps (put probe into basket, set unit on max hold). IP67.
- Replaceable, plug in probe.
- Measures: -50C up to +200C. Accuracy ± 0.8°C (at 0 ~ 65°C)
- Green & Red dual colour back light on the display to indicate temp hazards.



Waterproof
Type K



Model: Calibration Kit

- Accurate, easy way to check the calibration of infra red & probe thermometers on site.
- Protective hard carry case.
- Includes an accurate thermometer, calibration record and full instructions for use.
- Meets the requirements of most HACCP systems.
- Extra "K" type probes available so thermometer can be used for general testing as well.



Model: Mini Mart Cal Kit

- This kit has been produced to enable the quick & effective on site calibration checking of infra-red and probe thermometers in supermarkets.
- Kit includes:
- The Pocket Temp PRO (with Cal Cert) & Pocket Temp.
- HLP-IR160-F Infra-red gun
- All units are **HACCP APPROVED**



Model: FSP1 - Food Safety Kit

- HACCP Approved, cost effective.
- **ALL in One Food Safety Kit**,
- Great for start up business, cafes, school canteens, hotels restaurants, food trucks, etc,
- 1 x Infra-Red - IR-160 (page 2)
- 1 x Probe Thermometer - Pocket Temp (page 3)
- 1 x Min/Max-Medi-Temp (page 4)



Call 1800 500 160 for more details or pricing on any products



Model: Meat Thermometer T720CBBQ

- Temperature guide included on the dial face.
- Dial pointer points to the level to which the meat is cooked to, in the centre, or where the end of the probe is placed. You remove the meat from the BBQ or oven when the dial points to your desired level of 'doneness'
- Glow in the dark dial and pointer. Probe 120mm long.
- Dial size: diameter 61mm
- Wide temperature range marked: 40°C up to 80°C (100°F up to 170°F)



Leave in meat while cooking

Model: Pizza Thermometer

- Dial thermometer with long probe.
- Suits Wood fired and Gas Pizza Ovens.
- 300mm probe.
- Temp range: 0 ~ 400°C (32 ~ 750°F).
- Large 47mm dial face.
- Stainless steel body with tempered glass face for long life.



Pizza oven temps

Model: Candy / Fry

- Multi-Purpose - Dishwasher safe - Adjustable visual set pointer - Free Recipe.
- Dial display for cooking temps of candy with clip for jug or pot.
- Check oil temp when deep frying food (to ensure oil at optimum temp - not too hot to burn easily & not too cold for oil to soak into food).
- Display: +40°C up to +210°C.
- 50 mm Dial, 130mm long probe



Candy or Oil temps

Model: Meat Thermometer

- Dial display cooking thermometer insert into meat & cook until dial shows desired internal temp of the meat (**rare through to well done!**)
- Meat types & temps for cooking marked on dial.
- Dishwasher safe.
- Display range: 54°C up to +88°C. 40 mm Dial. 125mm long probe.



Leave in roast while cooking

Model: PLA-834L

- Versatile thermometer to check on the temperature inside a fridge or freezer.
- Large, clear 75mm dial.
- Food grade stainless steel.
- Temp: -30 up to +30°C
- Marked in 1°C increments
- Marked for correct fridge and freezer temperatures
- Hang mount or stand mount



Large 'Retro' fridge display

Model: PLA-834H

- Versatile thermometer to check on the temperature inside your oven or warmer.
- Large, clear 75mm dial.
- Food grade stainless steel.
- Temp: +50 up to +300°C
- Marked in 5°C increments
- Hang mount or stand mount



Large 'Retro' oven display



RTM3030



Meat Thermometer in roast



Temp Block with a Probe in place

Model: RTM3030

- Stainless steel, dial display.
- Clear 45 mm Dial.
- Fridge/Freezer thermometer with range: -30~+30°C
- Monitor the temps of fridges or freezers.
- Marked for correct freezer and fridge temperatures
- Foot stand or hang mount.



Fridge or Freezer temps

Model: OTM10250

- Stainless steel, dial display.
- Clear 45 mm Dial.
- Temp range: +10°~ +250°C.
- For oven, pie warmer, hot food, laboratory, pizza ovens, etc. 'Dry type ovens'
- Make sure your oven is the temperature that you set it to.
- Great for daily indication of warmers.
- Foot stand or hang mount.



Oven display temps

Call 1800 500 160 for more details or pricing on any products



COFFEE & TEA THERMOMETERS

Coffee Short / Coffee Long

- **Model: Coffee Temp (long):**
- 35 mm dial, 195mm probe.
- With safety jug clip.
- Dial colour coded for coffee
- Range: 0°C up to +100°C.
- Reduce risk of scalding & give consistency to your coffee.
- **Model: Coffee Short:**
- For 1/2 litre jug - 35mm dial.
- 135mm probe length.
- Has probe sheath & jug clip.



Milk Frothing

Model: Coffee-Pro

- Dial marked for perfect milk frothing temps for Soy milk, Regular milk (which includes low fat) & Hot for those that like it hot & steamy!
- Temp range: -18°C to +100°C
- Waterproof sealed head.
- With jug clip.
- Large 43mm diameter dial head
- 210mm stainless steel probe.

Dial Detail



Also: Coffee-Pro Short: 150mm



Marked for special milks

Model: Coffee-Stick

- Temp range: 0°F to +220°F
- (-18 to +104°C). Dishwasher safe.
- Waterproof sealed head.
- Large 43mm diameter dial head
- 210mm stainless steel probe.
- Dial increments in 2°F.
- Clip thermometer to side of the container - no need to remove thermometer between temperature readings.

Detail



Marked in °F

Model: PLA-T2T for TEA!

- Temperature range: -18°C to +100°C
- Specially marked dial with the perfect temperatures for different tea types and shows the safe drinking temperature
- Waterproof sealed head.
- With jug clip & stainless steel plate to keep the thermometer in place when in pot or in your cup.
- Large 43mm diameter dial head & 150mm stainless steel probe.



face detail



Plate shown with clip & 'how to use' (as it is in the packaging) Thermometer



Tea thermometer in a pot using stainless steel plate & clip



Tea thermometer in a pot using the teapot spout



Call 1800 500 160 for more details or pricing on any products





Model: Timer T1

- 99 minute & 59 second timer
- Counts down to 0 then beeps continuously & then counts up so that you know how much time has elapsed since the set time finished.
- Loud beeper for noisy areas.
- Magnetic mount, flip out stand and pocket clip
- Large display.
- Last set time memory for easy re-use.



Single channel

Model: Timer T3

- **3 Independent timers in one!**
- Up to 19hrs, 59min, 59 sec ea.
- Each with its own display and control button. Each timer starts at the required time, counts down to 0, beeps continuously & then counts up to let you know elapsed time.
- Includes a clock & stopwatch that act independently & times to 0.01 second! Magnetic mount, and fold out stand.



Three channel

Model: BIGtimer

- BIG Timer – big, bright display!
- Up to 99 minute & 59 seconds
- Loud beep when time is finished – great for noisy areas
- Counts up & down (can be used as a stopwatch as well)
- Magnetic mount & flip out stand
- Very versatile & great looking in any kitchen



Large clear display

Model: PLA-068 - Buzzzz Timer

- Timer has an audible alarm as well as vibrating alarm.
- A slide switch on the back allows you to easily choose to have just beeping, or, just vibrating if in a quiet area eg child care or both together
- Time is displayed in 'min' & 'sec' together on a clear digital display.
- Can also be worn around neck with a lanyard so you never miss that timer!



Vibrates for noisy & quiet areas

Model: PLA-952

- Mechanical timer **No Batteries**
- Heavy magnetic base.
- Simply rotate the top part, the dial, clockwise to the time you desire & set it down.
- The red section gradually disappears, showing you the amount of time left before your timing is finished.
- When the time is finished the timer will sound a bell-type sound to let you know.



No batteries
Retro style



Call 1800 500 160 for more details or pricing on any products



Model: Hang-Temp - PLA-2221

- Large LCD display of temp
- 66 x 42 x 11mm (overall excluding hanger bracket when used as stand)
- Flip out hanger bracket, clip down for stand and magnetic mount.
- Range: -20°C to +50°C
- C/F switchable (-4 to 122°F)
- Accuracy: ± 1°C
- Display resolution: 0.1°C
- Battery: 1 x CR2025 (included)



Model: Room-Temp

- Large LCD display of temperature and humidity.
- Max / Min memory for temp and humidity.
- Has flip out stand and key-hole screw mount for wall.
- Range - Temp: 0°C to +50°C
- Range - Humidity: 20% to 99%
- Accuracy: ± 1°C / ± 5% RH
- Display res 0.1°C / 1%RH
- Battery: 2 x AAA (included)
- Size: 79mm W x 66mm H



Model: 8891

- **Waterproof** thermometer (IP67)
- Use hand held or wall mounted.
- Super Large LCD display 45mm x 96mm.
- Plug-in & replaceable, heavy duty probe is 500mm long and equipped with a sliding, stainless steel clip.
- Temp range: -10 to 110°C.
- Accuracy: ±1°C
- Cable heat resistant to 150°C (Silicon);
- Probe clip: 15 x 18mm



Model: 87799

- Automatically log temperature & humidity of areas to an SD (memory) card.
- Easily review max/min on screen.
- External probe to also show the temp of a second remote area.
- Sampling rate of from 1 min to 720 min (12 hours) between samples.
- Set the logging frequency.
- Max card size 4G bytes.
- **No external software required!**
- Large LCD display.



Model: 8809

- 16,000 point memory, complete with the software and interface cable - so that you can set up and download your data from computer using USB port.
- Large display temp & humidity, and visible as well as audible alarm so that you can correct any situation quickly.
- Temp range: -20 to 70 deg°C.
- Humidity: (RH): 0.0 to 100.0%
- Power: 9V DC plug-in adaptor. 4 x AA batteries



Model: 8905

- Air Velocity, Volume, Temp, Humidity, Dew Point & Wet Bulb.
- 18mm Mini vane probe with built-in temp & humidity sensor.
- Functions include: Windspeed metric & imperial units,
- 99 Single point memory, up to 12,000 points auto data logging, date & time stamp.
- Max, Min, Average value.
- Hold function, Auto off: 20 min.
- Backlight.
- In carry case.



Room Temp great for monitoring temperature & humidity in rooms in Nursing Homes, Child Care Centres, Offices, Kitchen Areas, etc



87799 logging medical fridge

Call 1800 500 160 for more details or pricing on any products





Model: 8681

- This is a handy pen style pH meter - **Waterproof**.
- Dual LCD Display of pH / °C & °F
- Use to check pH levels in any liquid.
- Auto calibration by push button & buffer solution.
- Reads pH 0 up to 14.
- pH resolution: 0.1pH
- Accuracy 0.2pH.
- Temperature accuracy: ±1°C
- Temperature resolution: 0.5°C/°F

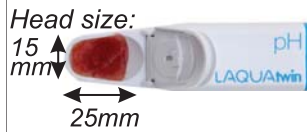


Liquid

Model: SI PH-11

- pH meter suitable for food manufacturing, including sushi, rice, powders, solids, etc.
- Very small sample required on the new technology flat pH sensor. (See pictures below)
- Superior product, made in Japan with 2 year warranty!
- Min sample volume: 0.1mL
- Measurement range: 0 - 14pH
- Resolution: 0.1pH.
- Accuracy: ± 0.1pH
- Incl: pipette, manual, case, pH 4 & pH 7 buffer solutions.

(Below shown measuring pH of meat sample)



Flat Sensor: small samples



Model: pH Pen 8694

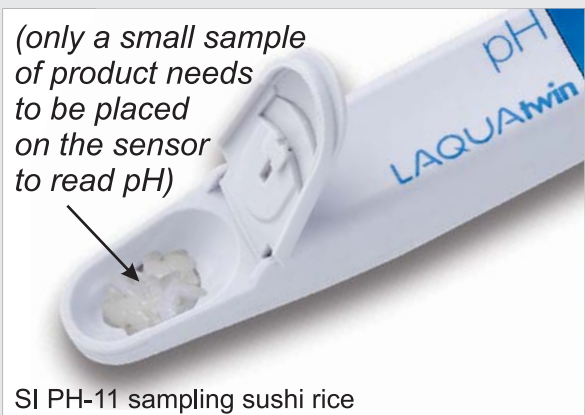
- Best model for testing many products including cheese, sushi rice and any other semi-solid products.
- Has auto pH calibration function, one touch for easy calibration.
- Large, clear LCD display which shows the real time pH and temperature
- IP65 Waterproof housing
- Dual display with Auto Temp Correction
- pH range: 2.00 - 12.00
- pH resolution: 0.01
- Temp rang: 0 - 60°C



Long Probe



8694 sampling sushi rice



SI PH-11 sampling sushi rice

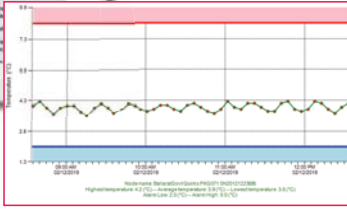
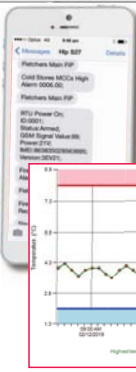
Call 1800 500 160 for more details or pricing on any products



WIRELESS & SMS DATA LOGGERS

Data Loggers

Versatile, wireless (little install needed), and a range to suit any requirement!



- Check on storage or transport from anywhere you have an internet connection - on your phone or laptop or other computer,
- Reset alarms or set points on the go,
- Call staff to attend to alarms,
- Only limited by your imagination!

Model: B80

- Temperature range: -200 up to +200C
- Automatically logs data to the Cloud.
- Access information anywhere you have WiFi access.
- Minimal monthly cloud cost.
- Email alarms and a report can be emailed each week / month including graphs and any alarms.
- Single 3.6m probe unit



Model: Air-Health 1

- Self-contained, internet connected to continuously monitor & transmit readings of **temp, humidity & volatile chemicals.**
- Use to determine if rented properties are too high temp or humidity cause mould/mildew.
- The VOC reading can be used to determine if unauthorised chemicals are being stored or used on the premises.
- No install! No wiring!



- Looks like a smoke detector!
- Battery lasts 5 years
- Replaceable

Model: EW-200-12

- Fully self contained temperature & humidity sensor
- Wall mount - easy install!
- Get alarms: SMS/Email
- Battery powered
- Batteries last up to 5 years
- High accuracy sensor (PT100)
- Temp range: -40 to +125°C
- Suits server rooms
- Uses low cost Sigfox network.
- Monitor temps from anywhere on the phone.



Model: EW 300-032 Temp

- Fully self contained temperature sensor with probe.
- Wall mount
- Waterproof IP65
- Battery powered
- High accuracy sensor (PT100 type) on a 1.5 meter Teflon cable
- Temp range: -30 to +100°C
- Uses low cost Sigfox network



Model: Air-Health 2

- Self-contained, internet connected to continuously monitor & transmit readings of **temp, humidity & dust.**
- Use to determine if too much dust in the air which could potentially be a health risk to workers.
- Should levels go above set limits an alarm will be raised via email to your contact.
- No install! No wiring!
- Looks like a smoke detector!



- Looks like a smoke detector!
- Battery lasts 5 years
- Replaceable

Model: SMS 266

- 3G/4G compatible small sized SMS alarm unit
- 2 Relay Outputs and 8 x Temperature Inputs
- Up to 10 phones can be sent an SMS
- GSM network to log the alarms to a cloud server
If required or just SMS



Model: SMS 270

- 3G/4G compatible small sized SMS alarm unit
- 2 Contact inputs and 2 x Analog inputs and 1 x temperature and humidity input.
- Up to 10 phones can be sent an SMS
- GSM network to log the alarms to a cloud server
If required or just SMS



Model: SMS 272

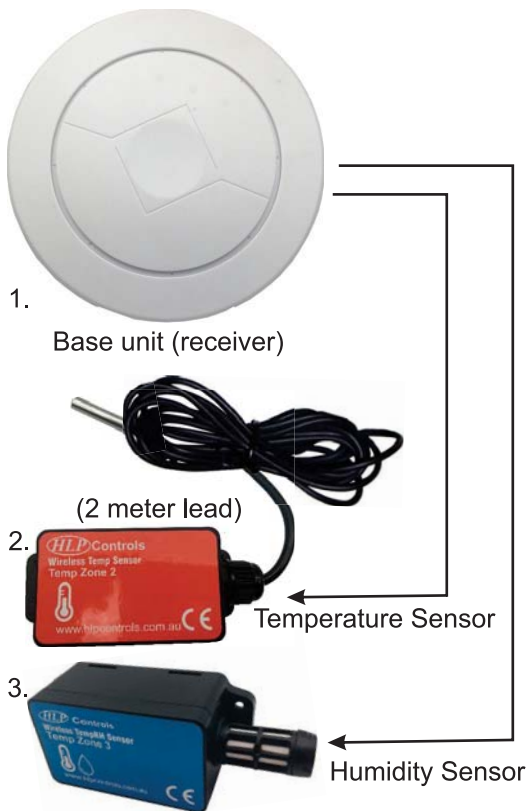
- 3G/4G compatible small sized SMS alarm unit
- 8 Contact inputs and 6 x Analog inputs and 1 x temperature and humidity input.
- Up to 10 phones can be sent an SMS
- GSM network to log the alarms to a cloud server
If required or just SMS



Call 1800 500 160 for more details or pricing on any products



Model: Temp Zone



1. Base unit (receiver)

2. (2 meter lead) Temperature Sensor

3. Humidity Sensor

Low Cost

- Food, Aged Care, Supermarkets, Restaurants, Cafes, Warehouses, etc - Anywhere that needs to monitor temperature and/or humidity.
- No more manual temperature or humidity logging!
- No missed readings.
- Know when fridges fail, power is down, or when fridge door is left open.
- Email & SMS alert system.

System:

- Unit receiver (Base unit) connects up to 100 remotes
- Temp sensor with 2 meter wire probe.
- Temp range: -40°C +125°C
- Temp & humidity sensor Temp range: -40°C +100°C

Easy install - 3 easy steps!

- **Step One:** Place Temp Zone receiver central to all fridges. Plug receiver into your LAN
- **Step Two:** Place wireless sensors where required.
- **Step Three:** Log onto the internet set up an account, set the alarms and its that easy!

SPECIFICATIONS

Temp Range: Wire Probe: -40°C + 125°C
Temp and Humidity -40°C + 100°C

Range: 200 Meters between the sensors and the base unit

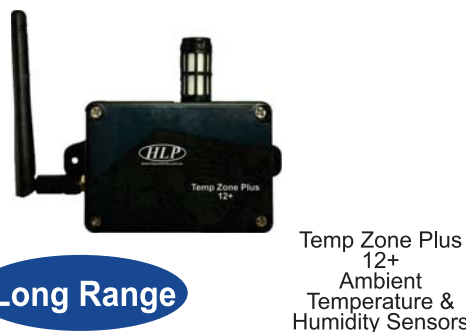
Model: Temp Zone Plus - Wireless Data Loggers



Temp Zone Plus 10+ Receiver



Temp Zone Plus 11+ Fridge Temperature Sensor Display + Alarm



Temp Zone Plus 12+ Ambient Temperature & Humidity Sensors

Long Range

- Food, Aged Care, Hospitals, Supermarkets, Restaurants, Cafes
- Any industry that needs to monitor temperature.
- Sensor batteries last up to 3 years
- No more manual temp logging!
- No missed readings.
- Logs to the cloud.
- Know when fridges fail, power is down or door is left open.
- Email & SMS alert system.

Easy install - 3 easy steps!

- **Step One:** Place Temp Zone Plus receiver central to all fridges. Plug receiver into your LAN or connect to WiFi.
- **Step Two:** Place wireless sensors where required.
- **Step Three:** Log onto the internet set up an account, set the alarms and you're up & running, its that easy!

SPECIFICATIONS

Temp Range: -40°C up to +100°C (accuracy: 0.5°C)

Humidity Range: 20 up to 80% rH (accuracy: 3%)

Memory capacity: 50,000 points

Battery: Built-in 3.6V lithium

Range: up to 2km between the sensors and the base unit

Call 1800 500 160 for more details or pricing on any products





Model: 8834

- Multi function unit with inbuilt Temp display
- Temp: -40°C to +85°C
- Plug-in probe: -40° to +120°C
- Push button or program start!
- Reads to 0.1°C, accuracy 0.6°C
- Stores 8000 readings in memory with time and date.
- Waterproof: IP 65. Shock proof with non-metallic housing.
- Red and Green LED displays status of alarms and logging.
- **NOTE: Requires interface.**★



2 Channel Plug In Probe

Model: 8828

- Multi function with display of temp: -40°C up to + 85°C.
- No need to have a separate display, this has it all!
- Accuracy of 0.6°C.
- Magnetic or Schedule start.
- Stores 16000 readings in memory with time and date.
- Waterproof: IP 66. Shock proof with non-metallic housing.
- Red & Green LED light status.
- **NOTE: Requires interface.**★



Heavy Duty!

Model: 8829

- Used by people transporting and/or storing products where the humidity is also important.
- Very easy to use.
- Memory: 16000 readings.
- Green & red LED light status.
- If used in transporting and a delivery arrives with the green light on "all is well and has been since leaving the factory".
- Great to use for storage.
- **NOTE: Requires interface.**★



Temp & Humidity

Model: 88378

- Temp data logger with dual Type K thermocouple inputs.
- Type K inputs can take any type of type K plug-in sensor.
- Temp range: -200 to +1300°C.
- Includes 2 x wire probes.
- 16000 point reading memory (from 1 second & 2 hours).
- Inbuilt LCD display of the two temperature inputs.
- **Requires plug-in USB interface.**



Dual channel Logger

Model: TI-1S - Single Use

- For shipment temperatures.
- Several ranges are available (for vaccine use: 2-8°C).
- **No computer needed.** Can use mobile phone (free app) to read data.
- Inbuilt with a 30min delay start
- 1 minute sample time
- Battery life of 2 years



- Simple Red/Green indicator
- **Low Cost.**

(Size: 40x32x3mm)

Single Use Logger

Model: 88181

- **No software required!**
- **Single use data logger**
- Range: -30 ~ 70°C.
- Accuracy of +/- 0.5°C
- Program though USB port, press start or schedule start, then place in with the product to log. When finished logging (eg at destination) download through USB to automatically produce pdf report.
- Max 8192 points.
- Waterproof IP65.
- Pack of 10.



Full graph!

Single Use logger

Model: 88161

- **No software required!**
- Temp range: -30 ~ 70°C
- Accuracy: ±0.5°C
- Stainless steel 'stick' probe on a 2 meter wire
- Inbuilt USB - plugs into your computer to set up the name of the location and any alarm points, select the sample rate
- Unique serial number
- Ideal for vaccines, medical, food, transport, etc.
- Plug into any computer USB to download



Long probe

Model: 88160

- **No software required!**
- Temp range: -30 ~ 70°C
- Accuracy: ±0.5°C
- Inbuilt USB - plugs into your computer to set up the name of the location and any alarm points, select the sample rate
- Unique serial number
- Ideal for vaccines, medical, food, transport, etc.
- Plug into any computer USB to download



No software needed

Model: LogEt8PTE: -85°C

- -85 to +85°C. (**Pfizer Vax**).
- Logs: 16,000 readings
- Password Protected with built-in USB
- Time between readings from 10sec to 24hrs
- Special External Teflon Probe with cable for -85°C temps.
- No cradle needed
- Battery life of 2 years & easily replaceable



- Free software by download,
- No cable needed (USB)
- Heavy duty water proof digital display

-85°C Logger

Call 1800 500 160 for more details or pricing on any products



Model: 9881

- Type K thermometer with inbuilt time, date, and temp printer.
- With this unit you can take the temp of any product & print a receipt for the customer with the time and date included with the temp.
- Includes RS232 interface for a computer, & hard carry case.
- Inbuilt 4000 point data logger.
- Temp range: -200°C ~ +1300°C.



Model: Medi-Log II

- Specifically designed to monitor & display fridge storage temps
- Displays temp inside the fridge, the minimum & maximum temps, and the alarm status ALL on the main screen.
- Audible beeper will sound should the alarm set-points be exceeded.
- Comes already set up.
- Easy to use free software for history & graphing functions.

(more information on back cover of this catalogue)



Model: 8824P★

- Data logger computer interface
- These units connect many of the loggers (marked ★) to your computer to set up monitoring & download logged information.
- One unit can be used for any number of loggers.
- Store all history files on disk, save to computer file or print.



Logger interface

Data Loggers

- Easy set-up software - very user friendly,
- Connect your data logger to the computer and follow the on-line prompts to set up the parameters you want for logging your temperatures,
- You will know that it is set up correctly as there will be a green 'recording' led flashing,
- Then place the data logger into the fridge or anywhere you need to log the temperature,
- Leave it in place as long as you wish ... a day, a week, a month or more - there is plenty of data record storage - just depends on your recording frequency [each 5/10/30/60 min],
- If your temperatures go over your set points a red led will flash & you'll know to download the data logger and check what happened,
- When you want to download your records - remove the data logger from your storage area, connect to your computer & start up the software. Simply click 'Download' on the screen. All of the stored records will then be displayed as a graph on the screen. You can now store the graph & reset the data logger ready to place back in your storage area.
- Should you have an issue & wish to speak to someone while your data logger and screen are keep in front of you - simply call our office during office hours & our technical help will talk you through any problem.



Wireless Data Loggers

- The advantages of these data loggers are many, including the varied alerts that are available as well as the ability for the user to be able to log onto the cloud server from anywhere you have an internet connection and check the status of all of your data loggers.
- You can also download reports at any time so that you are always ready should inspectors or auditors need to see them.
- These loggers have Internet / WiFi connectivity. Some of our units connect via the low cost SigFox network which keeps the monthly cost very low, otherwise your data will be stored on our secure cloud server which again is quite low cost.
- Some connect directly to the internet through a modem or router & some connect through a base station which is plugged into your router.
- The SigFox connected units have no 'on-site' connection at all.
- There are many types of alerts or alarms that are available to you so that you are alerted to any problems.
- Alerts can be sent by email to any number of email addresses, SMS messages can be sent to mobile phones, and even voice alerts may be sent to phones so that when the receiver picks up the phone a voice tells them the location and details of the problem so that action may be taken to correct the situation.



Call 1800 500 160 for more details or pricing on any products



TRACKERS

Model: Falcon

- Locate & track assets
- Battery Powered AA Batteries
- IP67 waterproof
- Vehicles, trucks, trailers, pallets, packages & freight
- Run hour monitoring
- Temperature / cold-chain
- Tank levels
- Remote monitoring and recording of temperatures and provides email or SMS alarms



Track with temp & level

Model: Tracker 1

- Compact real time vehicle tracking device,
- Simple plug and play installation for fleet management, monitoring, driver safety and theft recovery,
- Specifically designed for monitoring with GPS / GLONASS tracking,
- Connection via existing OBDII ports (standard on most passenger vehicles).



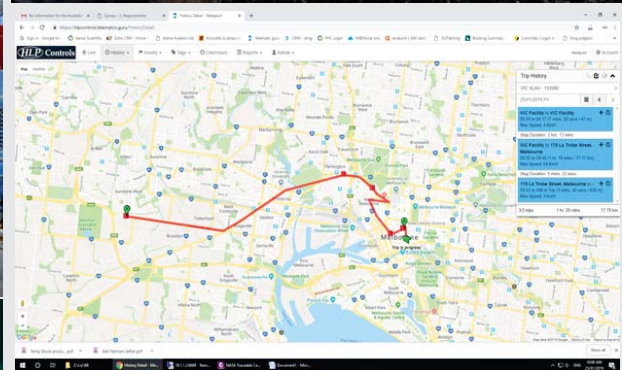
Vehicle tracker

Model: Locator

- Locate & track assets
- Up to 2 years detailed tracking
- Up to 7 years once daily location
- Rugged, robust, waterproof
- Mining, construction, road-work, service vehicles
- Wireless
- AA Batteries
- No Installation
- Locate stolen or lost assets easily...



Up to 7 year battery life



Call 1800 500 160 for more details or pricing on any products





Model: T1372 (CO)

- Range: 0 ~ 999ppm. Res.1ppm.
- Accuracy $\pm 5\%$ of reading or 2ppm which is greater.
- Sensor type: Stabilized electrochemical gas specific.
- Max hold with Time stamp, Alarm level settings.
- Auto sensor zeroing on start up.
- **Model T1372R:** Auto Data Memory:10,000 sets (only download by PC), software + RS232 cable.



Data logger software available

Model: 7701 (CO)

- Digital pocket type.
- Adjustable alarm beeps above 25ppm CO.
- Dual display with Back-light.
- Electrochemical sensor.
- Detects and alarms for dangerous concentrations of CO. Range 0 - 999 ppm.
- Complete with wrist strap, manual and carry pouch.
- Ideal for HVAC, Car Park areas and heating installers.



Personal CO safety

Model: JL269 - (Flamable)

- Flammable gas: LPG., LNG., Solvents, etc. Gas levels from 50 up to 10,000 ppm.
- 10 sec response time from 'on'.
- Digital display & alarm rate signals the amount of gas.
- Small size and a long gooseneck to get hard to reach areas.
- Display indicators show Power status, Battery low, and Fault.
- Rechargeable power pack gives up to 8 hours use.



Long gooseneck reaches back areas

Model: Gas Alarm- (Flammable)

- Unit has a LED and is designed to be mounted on a wall in a suitable position to detect flammable, Combustible gasses incl: LPG, natural, petrols, solvents, methane, etc.
- Warning is sounded at 10% LEL (100% is combustible point)
- 240 VAC & a 2.5 meter cord.
- This can also be connected to alarm or fire detection systems.



Combustible

Model: Gas Alarm - (CO)

- Unit has a LED and is designed to be mounted on a wall in a suitable position to detect CO (Carbon Monoxide) near the source of a gas eg: gas or wood heaters, generators, car exhaust, etc.
- Warning is sounded at 25ppm.
- 240 VAC & a 2.5 meter cord.
- This can also be connected to alarm or fire detection systems.



Carbon Monoxide

Model: T1370 - CO₂

- Complete with Calibration Cert.
- Data Hold, Max / Min with Time Stamp, Alarm Level settings, Auto Power Off time setting, Backlit display.
- Auto Data Memory Capacity: Approx 20,000 sets.
- Maint free dual wavelength NDIR infrared CO₂ sensor (non-dispersive infrared).
- Measuring range: 0 to 6,000 ppm, Temp: -20 to 60°C.



Heavy Duty!

Model: G200(CO₂)

- Easily monitor CO₂ gas levels in cellars, pubs, clubs and all venues with gas pressure beverage dispensers. The danger of a CO₂ leak in these areas is very real with deaths occurring. Australian standard (AS 5037) details requirements.
- The system has a master unit where the gas sensor is, with 1 remote alarm unit. Easy calibration and quick to install.



Model: GTF200(CO/CO₂/R22/Alarm HD R40X)

- Heavy Duty case die-cast
- Self contained, 24VDC powered gas detector.
- Gas levels from 0 - 8000ppm.
- Has a loud alarm that sounds when the detected gas level is over the set point.
- Has a LED and LCD digital indicator and is designed to be mounted on a wall.
- **Heavy duty**, die-cast alloy metal case water proof to IP65.



Heavy Duty wall mount



Call 1800 500 160 for more details or pricing on any products

The experts in monitoring and measurement

Data-logger with one button control - model: Medi-Log II



Overview:

The Medi-Log™II is specifically designed to monitor and display fridge storage temperatures. The unit will display the temperature inside the fridge, the minimum & maximum temperatures and the alarm status on the main screen. An audible beeper will sound should the alarm set-points be exceeded. The unit comes already set up with vaccine storage high and low alarm set points as well as Department of Health recording interval requirements. Easy to use free software allows the history to be seen as well as graphing functions.

Special Features and Use of Medi-Log II:

- Alarm set-points are automatically set by default to low 2°C and high of 8°C when the unit is first powered (these can be changed if required).
- Main screen shows MIN (minimum) and MAX (maximum) temperatures plus current (ambient) temperature.
- All alarms are shown on main screen.
- Start delay is set at a default of 30 minutes (this can be changed if required, anywhere from 0 to 6 hours).
- One button to control all screens and functions.

SPECIFICATIONS

Temp Range:	- 40°C to +85°C
Probe:	Thermocouple on 2.5 met cable
Accuracy:	Between -20~+40°C ± 0.5°C
Alarms:	Audible and on-screen
Data Logging:	16,000 point capacity



Too many features and specs to list here - see the spec sheet online (scan the QR code left)

Temperature Probes (many more available)



Model: TPK-01

- K thermocouple wire probe.
- Quick response.
- Max temp 150°C.
- 1 meter long flexible wire.
- NOTE: for special order can be extended up to 100 met.

Model: TPK-01H4SS

- K thermocouple wire probe.
- Max temp 400°C
- 4 meter long, (2 meter & 6 meter long also available)
- Stainless Steel braid & tip,
- **Fast response.**
- Suits oven temperatures, etc

Model: TPK-02

- Type K thermocouple probe.
- Max temp 200°C.
- St/steel 150mm long,
- 3mm diameter, Low cost.

Model: TPK-04 Blunt

- Type K thermocouple probe.
- Max temp 600° C,
- Stainless steel probe, 200 mm long 3 mm diameter (blunt)
- Plastic handle and 1 meter long curly cable.
- Medium response time.

We make to order



Model: TPK-14 - Surface

- Type K *SMALL SURFACE* probe. Max temp 400°C.
- 15mm diameter, Curly cord.
- For measuring any surface temps *FAST*. (eg: grills, plates, etc)

Model: TPK-05 Fast

- Type K thermocouple probe.
- Max temperature 400°C.
- Stainless steel probe 140mm long (reduced tip 1.5mm).
- Plastic handle and 1m long curly cable, Fast response.

Model: TPK-15 Sharp

- Type K temperature probe.
- Maximum temperature 600°C.
- General purpose, Heavy duty with curly cord & plug.
- 3mm Diameter x 150mm, sharp, st/steel probe.

Model: TPK-18 Industrial

- Type K probe. Max 400 °C.
- General purpose, **Heavy duty** with curly cord & large 170 x 20mm handle.
- 5mm Diam x 200mm, sharp.



HLP Controls

Innovating solutions in testing technology

All details in this catalogue are correct at the time of printing - May 2021

HLP Controls Pty Limited
Unit 5/53 Argyle Street
South Windsor NSW 2756

Phone: 1800 500 160
Fax: 1800 827 160
Email: sales@hlpcontrols.com.au
Web: www.hlpcontrols.com.au
A.B.N.: 50 097 834 690

